

**LIVE VIRTUAL**

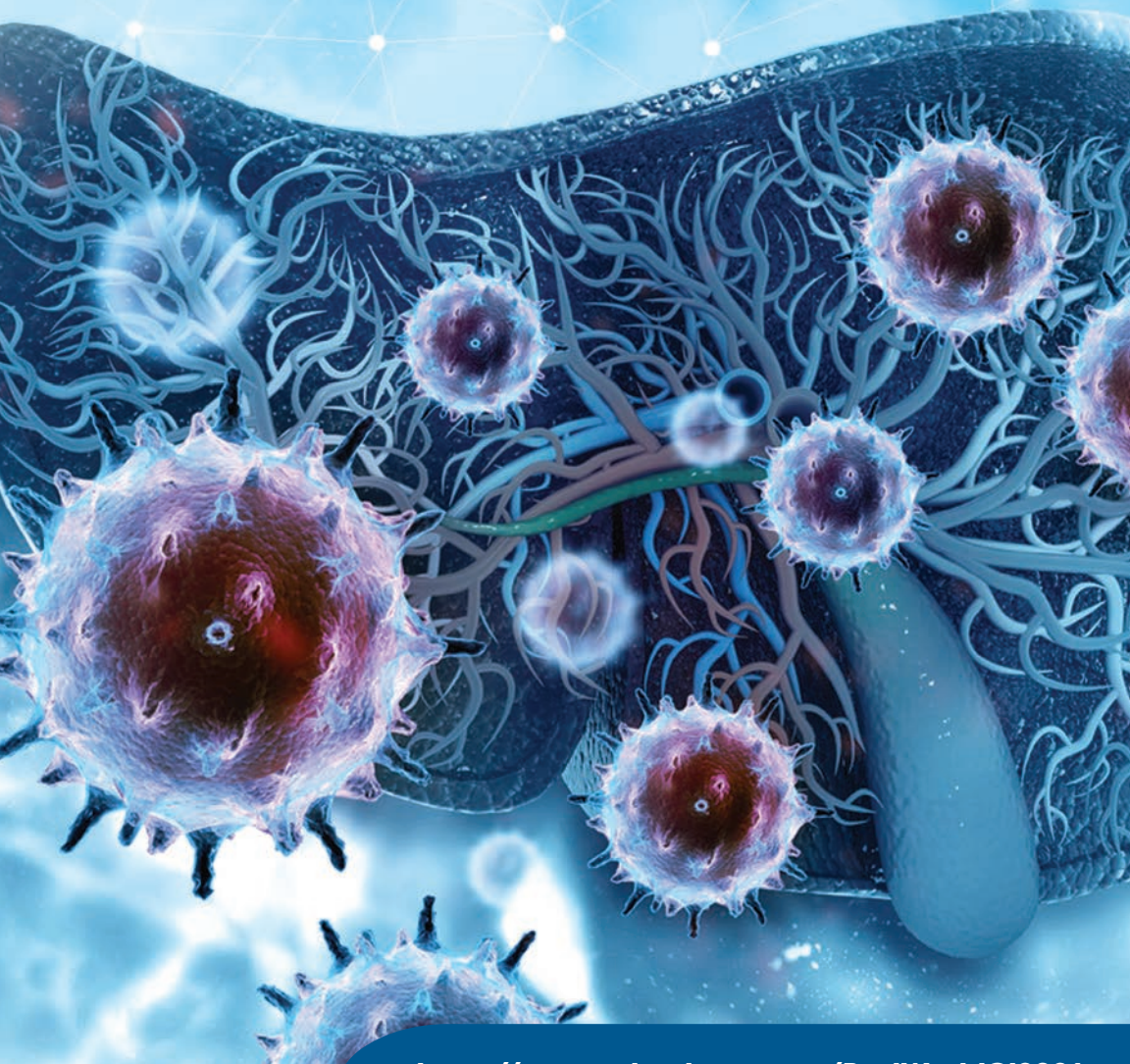
**UNIVERSITY OF PENNSYLVANIA**  
REAL WORLD EVIDENCE IN  
GASTROINTESTINAL AND HEPATIC  
DISEASES CONFERENCE

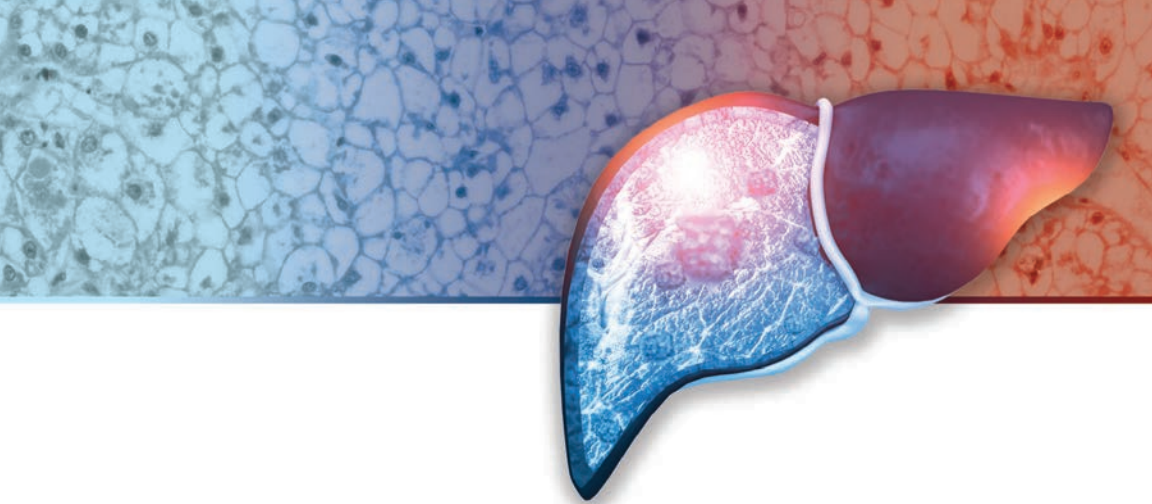
**CME/CE-ACCREDITED CONFERENCE**

**ABIM**  
**CME MOC**  
ACCREDITED

**FRIDAY, JANUARY 29, 2021**

**THIS CONFERENCE WILL BE LIVE STREAMED**





## COURSE DESCRIPTION & TARGET AUDIENCE

The objective of this conference is to discuss evidence derived from real world data and other clinical research methods that will influence clinical care in gastroenterology and hepatology. The meeting will have three sections: Advanced Liver Disease Management, Colon Cancer Prevention, and Inflammatory Bowel Disease Comparative Effectiveness. Each section will include a combination of clinical updates, introduction of important research methods germane to the subject matter and a panel discussion among experts in the field.

This activity has been designed for gastroenterologists, gastrointestinal surgeons, colon & rectal surgeons, gastroenterology fellows, internists, residents, physician assistants, biostatisticians and other health care professionals.

### LEARNING OBJECTIVES

Upon conclusion of this educational activity, the participant should be able to:

- Review latest advances in management of advanced liver disease derived from real world data
- Assess the latest evidence on gastrointestinal cancer screening and prevention derived from real world data
- Review and compare the results for comparative effectiveness studies in inflammatory bowel disease
- Describe the resources and methods available for real world data studies in gastroenterology and hepatology

### HOSTING DEPARTMENT

*University of Pennsylvania Real World Evidence in Gastrointestinal and Hepatic Diseases Conference* is hosted by the Division of Gastroenterology, Department of Medicine at the University of Pennsylvania.

### ACCREDITATION



JOINTLY ACCREDITED PROVIDER™  
INTERPROFESSIONAL CONTINUING EDUCATION

In support of improving patient care, Penn Medicine is jointly accredited by the Accreditation Council for Continuing Medical Education (ACCME), the Accreditation Council for Pharmacy Education (ACPE), and the American Nurses Credentialing Center (ANCC), to provide continuing education for the healthcare team.



## DESIGNATION OF CREDIT

**Physicians:** Penn Medicine designates this live activity for a maximum of 6.5 *AMA PRA Category 1 Credits*<sup>™</sup>. Physicians should claim only the credit commensurate with the extent of their participation in the activity.



**ABIM MOC:** Successful completion of this CME activity, which includes participation in the evaluation component, enables the participant to earn up to 6.5 MOC points in the American Board of Internal Medicine's (ABIM)

Maintenance of Certification (MOC) program. Participants will earn MOC points equivalent to the amount of CME credits claimed for the activity. It is the CME activity provider's responsibility to submit participant completion information to ACCME for the purpose of granting ABIM MOC credit.

**Physician Assistants:** Penn Medicine has been authorized by the American Academy of PAs (AAPA) to award AAPA Category 1 CME credit for activities planned in accordance with AAPA CME Criteria. This activity is designated for 6.5 AAPA Category 1 CME credits. PAs should only claim credit commensurate with the extent of their participation.

**Certificates and Transcripts:** After the conference has concluded, all participants will receive a follow-up email with instructions and a link. Once participants submit the request for credit, the earned credits will be available for viewing on your transcript or available for printing at <https://upenn.cloud-cme.com>. Please note that the individual certificate will not be mailed.

## CONFERENCE FORMAT

The *University of Pennsylvania Real World Evidence in Gastrointestinal and Hepatic Diseases Conference* will be held virtually on Friday, January 29, 2020. In-person attendance is not permitted for this conference.

## REGISTRATION FEES

There is no fee to register for this conference, however pre-registration is required. Registration includes live stream access to the conference and access to view the presentations (slides) online. All pre-registered attendees will receive a link and instructions to sign-in and join the virtual conference no later than Wednesday, January 27, 2021. **BE SURE TO CHECK YOUR SPAM BOX FOR EMAILS REGARDING THIS CONFERENCE.**

Please register online at <https://upenn.cloud-cme.com/RealWorldGI2021>. See the registration form for mailing information if you must register through the mail. *Please note:* mailed registrations can take up to 7-21 business days before they are received. We are experiencing longer delays receiving mail due to the COVID-19 pandemic. We encourage all attendees to register online. All registrations will be confirmed by email as long as your registration is received no later than Wednesday, January 27, 2021.

## DISCLOSURES

Penn Medicine, Office of Continuing Medical and Interprofessional Education, adheres to the *ACCME Standards for Commercial Support*. Faculty and planners' disclosure information will be made available in the conference materials and syllabus. Faculty members are also expected to disclose to participants any discussions of off-label and/or investigational uses of pharmaceutical products within their presentations.

## CANCELLATION POLICY

The University reserves the right to cancel or postpone any course due to unforeseen circumstances.



## FACULTY

### COURSE DIRECTOR

#### **James D. Lewis, MD, MSCE**

Professor of Medicine and Epidemiology  
Associate Director, Center for  
Inflammatory Bowel Disease  
Interim Director of Gastroenterology at  
Penn Presbyterian Medical Center  
Penn Medicine  
Philadelphia, PA

### GUEST SPEAKERS

#### **David Goldberg, MD**

Associate Professor of Clinical Medicine  
University of Miami School of Medicine  
Miami, FL

#### **John M. Inadomi, MD**

Professor of Medicine  
University of Utah School of Medicine  
Salt Lake City, UT

#### **Frank I. Scott, MD**

Assistant Professor of Medicine  
University of Colorado School of Medicine  
Denver, CO

#### **Siddharth Singh, MD**

Assistant Professor of Clinical Medicine  
University of California at San Diego  
San Diego, CA

### SPEAKERS

*The speakers listed in this section are all faculty of the Perelman School of Medicine at the University of Pennsylvania and Penn Medicine, Philadelphia, PA*

#### **Meenakshi Bewtra, MD, PhD, MPH**

Assistant Professor of Medicine and Epidemiology  
Senior Scholar, CCEB

#### **Therese Bittermann, MD, MSCE**

Assistant Professor of Medicine

#### **Gary W. Falk, MD, MS**

Professor of Medicine  
Co-Director, Esophagology and  
Swallowing Center  
Clinical Co-Director (Adult GI),  
Joint Center with CHOP

#### **Rebecca A. Hubbard, PhD**

Professor of Biostatistics in Biostatistics  
and Epidemiology

#### **David E. Kaplan, MD, MSc**

Associate Professor of Medicine  
Director of Hepatology  
Philadelphia VA Medical Center

#### **Nabeel Khan, MD**

Associate Professor of Clinical Medicine  
Director of Gastroenterology  
Philadelphia VA Medical Center

#### **Gary R. Lichtenstein, MD**

Professor of Medicine  
Director, Center for Inflammatory Bowel Disease

#### **Nadim Mahmud, MD, MS, MPH, MSCE**

Assistant Professor, Gastroenterology  
Assistant Professor, Center for Clinical  
Epidemiology and Biostatistics

#### **Shivan J. Mehta, MD, MBA**

Assistant Professor, Medicine and Health Policy  
Associate Chief Innovation Officer  
Penn Medicine Center for Innovation

#### **K. Rajender Reddy, MD**

Ruimy Family President's Distinguished  
Professor of Medicine  
Director of Hepatology  
Director, Viral Hepatitis Center  
Medical Director, Liver Transplantation

#### **Marina Serper, MD, MSc**

Assistant Professor of Medicine

#### **Ravy K. Vajravelu, MD, MSCE**

Instructor of Medicine

#### **Yu-Xiao Yang, MD, MSCE**

Associate Professor of Medicine



**LIVE VIRTUAL**

## AGENDA

FRIDAY, JANUARY 29, 2021

9:00 – 9:10 AM **Welcoming Remarks**  
James D. Lewis, MD, MSCE

9:10 – 9:30 AM **The Sources of Real World Data:  
Claims Data, Electronic Health Records, and Prospective Registries**  
James D. Lewis, MD, MSCE

### **ADVANCED LIVER DISEASE MANAGEMENT**

*Moderator – K. Rajender Reddy, MD*

9:30 – 9:50 AM **Liver Transplantation and the Need for Competing Risk Models  
in Advanced Liver Disease Research**  
Nadim Mahmud, MD, MS, MPH, MSCE

9:50 – 10:10 AM **Has Hepatitis C Therapy Reduced the Risk of Hepatocellular Carcinoma**  
David E. Kaplan, MD, MSc

10:10 – 10:30 AM **How Best to Allocate a Limited Resource: Cadaveric Liver Transplantation**  
David Goldberg, MD

10:30 – 10:50 AM **Variation in Care and Outcomes for Patients With Chronic Liver Disease**  
Therese Bittermann, MD, MSCE

10:50 – 11:10 AM **Advanced Liver Disease 2020 Year in Review: Lessons from Real World Data**  
Marina Serper, MD, MSc

11:10 – 11:30 AM **Panel Discussion**  
Therese Bittermann, MD, MSCE, David Goldberg, MD, David E. Kaplan, MD, MSc,  
Nadim Mahmud, MD, MS, MPH, MSCE and Marina Serper, MD, MSc

11:30 AM – 12:00 PM Break

### **CANCER PREVENTION**

*Moderator – Gary W. Falk, MD, MS*

12:00 – 12:20 AM **Methods to Address the Complexity of Real World Data**  
Rebecca A. Hubbard, PhD

12:20 – 12:40 PM **Medications that Increase and Decrease the Risk of Colorectal Cancer**  
Yu-Xiao Yang, MD, MSCE

12:40 – 1:00 PM **The Rise in Early Onset Colorectal Cancer: Biology, Behavior, or Bias?**  
Ravy K. Vajravelu, MD, MSCE

1:00 – 1:20 PM **Preventing Colon Cancer by Increasing Patient and Provider Participation  
in Screening: Evidence From Pragmatic Trials**  
Shivan J. Mehta, MD, MBA



1:20 – 1:40 PM **How Often Should we do Screening and Surveillance Colonoscopy?**  
John M. Inadomi, MD

1:40 – 2:00 PM **Panel Discussion**  
Rebecca A. Hubbard, PhD, John M. Inadomi, MD, Shivan J. Mehta, MD, MBA,  
Ravy K. Vajravelu, MD, MSCE and Yu-Xiao Yang, MD, MSCE

2:00 – 2:30 PM Break

## **INFLAMMATORY BOWEL DISEASE**

*Moderator* – Gary R. Lichtenstein, MD

2:30 – 2:50 AM **Observational Cohort Studies are the Best Way to Compare Therapies for IBD**  
Meenakshi Bewtra, MD, PhD, MPH

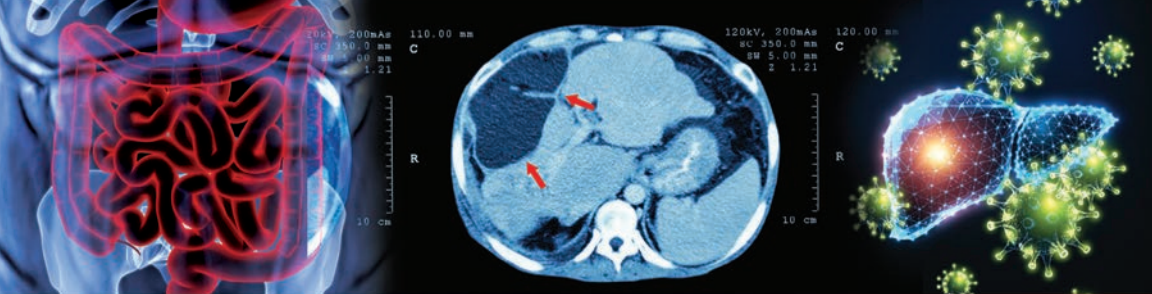
2:50 – 3:10 PM **Network Meta-analysis is the Best Way to Compare Therapies for IBD**  
Siddharth Singh, MD

3:10 – 3:30 PM **Markov Modeling is the Best Way to Compare Therapies for IBD**  
Frank I. Scott, MD

3:30 – 3:50 PM **IBD 2020 Year in Review: Lessons From Real World Data**  
Nabeel Khan, MD

3:50 – 4:10 PM **Panel Discussion**  
Meenakshi Bewtra, MD, PhD, MPH, Nabeel Khan, MD, Frank Scott, MD  
and Siddharth Singh, MD

4:10 – 4:25 PM **Closing Remarks**  
James D. Lewis, MD, MSCE



## REGISTRATION FORM

**LIVE VIRTUAL**

### UNIVERSITY OF PENNSYLVANIA

## REAL WORLD EVIDENCE IN GASTROINTESTINAL AND HEPATIC DISEASES CONFERENCE

**FRIDAY, JANUARY 29, 2021**

We strongly encourage you to register for this conference online at

**<https://upenn.cloud-cme.com/RealWorldGI2021>**

**Questions? Contact us at:**

[penncme@penmedicine.upenn.edu](mailto:penncme@penmedicine.upenn.edu) • Phone: 215-898-6400 or 215-898-8005

Please note we are unable to accept faxed registration forms.

Please print or type

\_\_\_\_\_  
Name (First) (Last)

\_\_\_\_\_  
Academic Degree

\_\_\_\_\_  
Medical Specialty

\_\_\_\_\_  
Affiliation (Hospital, Office, or Company)

\_\_\_\_\_  
Address (  Affiliation or  Home)

\_\_\_\_\_  
City State Zip

\_\_\_\_\_  
Phone Fax

\_\_\_\_\_  
E-mail

### REGISTRATION

There is no fee to register for this conference, however pre-registration is required.

Please register online at **<https://upenn.cloud-cme.com/RealWorldGI2021>**.