

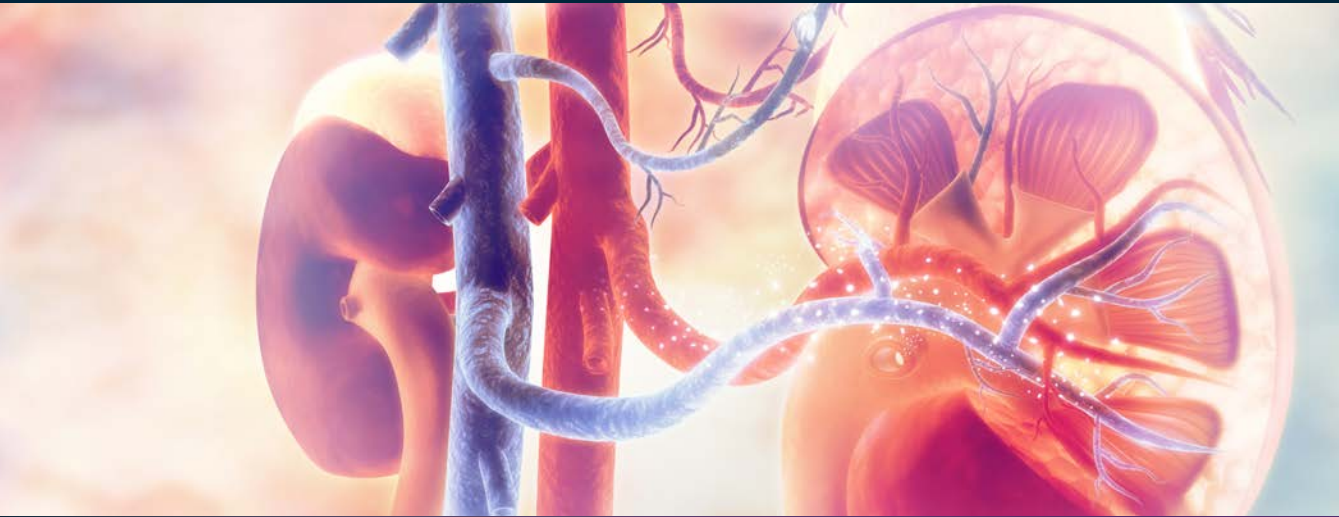


Penn Medicine

Continuing Medical and
Interprofessional Education

IN-PERSON AND VIRTUAL

Penn Invasive Hypertension Management Symposium



Friday, December 1, 2023

In-Person Meeting Location

Arthur H. Rubenstein Auditorium at the
Smilow Center for Translational Research
3400 Civic Center Blvd.
Philadelphia, PA 19104

CME/CE-ACCREDITED CONFERENCE

<http://upenn.cloud-cme.com/Invasivehypertension2023>

PROGRAM OVERVIEW & TARGET AUDIENCE



Hypertension remains the leading cause of cardiovascular death in the United States yet a large percentage of patients with hypertension cannot achieve control of their disease. Several contemporary sham-controlled randomized studies have shown that a novel invasive therapy called renal denervation can lower blood pressures over medications alone. This unique symposium explores cutting edge comprehensive hypertension care highlighting the role of renal denervation in the armamentarium of options to treat resistant hypertension.

This activity has been designed for interventional cardiologists, nephrologists, geriatricians, endocrinologists, nurse practitioner, nurses, residents fellows students and other healthcare professionals providing care to patients with hypertension in their practice.

LEARNING OBJECTIVES

Upon completion of this activity, physicians and health care providers will be able to:

- Identify common causes of secondary hypertension
- Describe renal denervation's role in modern day management of hypertension
- Describe the workup for resistant hypertension
- Review results of contemporary renal denervation trials
- Discuss inclusion and exclusion criteria for renal denervation trials
- Apply into practice the renal denervation procedure
- Discuss the various roles of the hypertension team

HOSTING DEPARTMENT

The *Penn Invasive Hypertension Management Symposium* is hosted by the division of cardiovascular medicine in the Department of Medicine at Penn Medicine.

SERVICES FOR THE DISABLED If special arrangements are required for an individual with a disability to participate this meeting, please contact the Office of Continuing Medical and Interprofessional Education no later than November 20, 2023, at 215-898-6400.

NONDISCRIMINATION STATEMENT The University of Pennsylvania values diversity and seeks talented students, faculty, and staff from diverse backgrounds. The University of Pennsylvania does not discriminate on the basis of race, sex, sexual orientation, gender identity, religion, color, national or ethnic origin, age, disability, or status as a Vietnam Era Veteran or disabled veteran in the administration of educational policies, programs or activities; admissions policies; scholarship and loan awards; athletic, or other University administered programs or employment. Questions or complaints regarding this policy should be directed to Executive Director, Office of Affirmative Action and Equal Opportunity Programs, 3600 Chestnut Street, Sansom Place East Suite 228, Philadelphia, PA 19104-6106 or 215-898-6993 (Voice) or 215-898-7803 (TDD). www.upenn.edu/affirm-action.

Penn Invasive Hypertension Management Symposium

ACCREDITATION



In support of improving patient care, Penn Medicine is jointly accredited by the Accreditation Council for Continuing Medical Education (ACCME), the Accreditation Council for Pharmacy Education (ACPE), and the American Nurses Credentialing Center (ANCC), to provide continuing education for the healthcare team.

DESIGNATION OF CREDIT

Physicians: Penn Medicine designates this live activity for a maximum of 8.0 *AMA PRA Category 1 Credits™*. Physicians should claim only the credit commensurate with the extent of their participation in the activity.

Nurses: This program provides 8.0 NCPD hours.

Physician Assistants: AAPA accepts certificates of participation for educational activities certified for *AMA PRA Category 1 Credit™* from organizations accredited by ACCME or a recognized state medical society. PAs may receive a maximum of 8.0 Category 1 credits for completing this activity.

Certificates and Transcripts: After the conference has concluded, all participants will receive a follow-up email with instructions and a link with instructions on how to claim their credit. Once participants submit the request for credit, the earned credits will be available for viewing on your transcript or available for printing at <https://upenn.cloud-cme.com>. Please note that the individual certificate will not be mailed.

LIVE AND VIRTUAL PRESENTATIONS

The *Penn Invasive Hypertension Management Symposium* will be held Friday, December 1, 2023 by in-person or live-stream (virtual) attendance. The live and virtual presentations will follow the scheduled agenda in real time (EST).

TO ATTEND IN-PERSON:

Meeting Location

Arthur H. Rubenstein Auditorium at the Smilow Center for Translational Research
3400 Civic Center Blvd., Philadelphia, PA 19104

Parking

Parking is available at 3600 Civic Center Blvd, Philadelphia, PA 19104. The fee is \$20 and is not validated or reimbursed by the symposium.

TO ATTEND BY LIVE-STREAM (VIRTUAL):

Attendees who are registered to attend virtually will receive an email 48 hours in advance that includes a link to join the symposium. All virtual attendees will be required to sign into the meeting using your first name, last name and email address in order to be marked as attended and receive credit, if applicable.

Penn Invasive Hypertension Management Symposium



REGISTRATION FEES

IN-PERSON AND VIRTUAL ATTENDANCE:

Please register online at <http://upenn.cloud-cme.com/Invasivehypertension2023>. The fees to attend in-person or virtual are as follows: \$50 for physicians and industry attendees, \$25 for nurse practitioners, nurses, physician assistants and other healthcare professionals. There is no fee for residents, fellows and students or Penn Medicine staff, residents, fellows, and students.

All pre-registered, **in-person** attendees will receive access to the conference, attendee booklet, continental breakfast, lunch and breaks. Registration also includes access to view the presentations online for one year. Walk-ins are discouraged. Please be sure to register in advance.

All pre-registered **virtual** attendees will receive an email 48 hours in advance that includes a link with instructions to sign-in and join the virtual conference, as well as the attendee booklet (downloadable PDF). Registration also includes access to view the presentations online for one year.

Need to Register by Mail?

Please note: mailed registrations may take more than 5-10 business days before they are received by the CME Office because we continue to experience longer delays in receiving mail. We encourage all attendees to register online. See the registration form for mailing instructions. All registrations will be confirmed by email as long as your registration is received before November 29, 2023.

BE SURE TO CHECK YOUR SPAM BOX FOR EMAILS REGARDING THIS CONFERENCE.

CANCELLATION POLICY

In order to process refunds for course withdrawals, cancellations must be received in writing by November 20, 2023 (subject to a service charge of \$25.00). No refunds will be issued thereafter.

The University reserves the right to cancel or postpone any course due to unforeseen circumstances. In the event of cancellation or postponement, the University will refund registration fees but is not responsible for related costs or expenses to participants, including cancellation fees assessed by hotels, airlines, and travel agencies.

DISCLOSURES

Penn Medicine, Office of Continuing Medical and Interprofessional Education, adheres to the *ACCME Standards for Integrity and Independence in Accredited Continuing Education*. Faculty disclosure information will be made available in the conference materials and syllabi. Faculty members are also expected to disclose to participants any discussions of off-label and/or investigational uses of pharmaceutical products or devices within their presentations.



AGENDA > FRIDAY, DECEMBER 1, 2023

- 7:30 AM – 8:00 AM **In-person Registration & Continental Breakfast**
- 7:45 AM – 8:00 AM **Virtual Attendee Sign-in**
(Broadcast goes live at 8:00 am)
- 8:00 AM – 8:10 AM **Welcome & Introductions**
Debbie Cohen, MD | Renal Electrolyte and Hypertension
Taisei Kobayashi, MD | Cardiology
- 8:10 AM – 8:20 AM **Hypertension Guideline Overview**
Debbie Cohen, MD | Renal Electrolyte and Hypertension
- JNC/AHA
 - SCAI position
 - European Society of Hypertension
 - ESC
- 8:20 AM – 8:25 AM **BP – How to Measure it When to Measure it?**
Matthew Denker, MD, MSCE | Renal Electrolyte and Hypertension
- Time of day?
 - Differences between office/24 hour
- 8:25 AM – 8:50 AM **Secondary Hypertension: What to Look for and How to Diagnose it**
Jordana Cohen, MD | Renal Electrolyte and Hypertension
- Renal artery stenosis
 - Vasculitides/FMD
 - Endocrinopathies
 - Hyperaldo – prevalence, more common than we think
 - Pheo
- 8:50 AM – 9:30 AM **Current State of HTN control**
Sandeep Aggarwal, MD | Renal Electrolyte and Hypertension
- Global rates of control
 - Effect of the pandemic on HTN control rates
 - Adherence rates even in drug control trials – via urine drug screening
 - Medication as a confounder
 - Disparities in HTN control (race, gender, global economic states)
- 9:30 AM – 9:50 AM Break & breakout sessions with 24 hour ABPM
- 9:50 AM – 10:00 AM **Targets and Modalities of RDN**
Taisei Kobayashi, MD | Cardiology
- Surgical splanchniectomy
 - Anatomical overview and distribution of renal nerves
 - Modalities
 - Radiofrequency RDN
 - Ultrasound RDN
 - Alcohol RDN



10:00 AM – 10:20 AM

Current Data on RDN Part 1

Debbie Cohen, MD | Renal Electrolyte and Hypertension

- Overview of trial design
 - The rationale for on and off med trials
 - Global registry
- rRDN
 - SPYRAL ON/OFF
 - SPYRAL ON Pivotal
- uRDN
 - RADIANCE HTN SOLO
 - RADIANCE HTN TRIO

10:20 AM – 10:40 AM

Current Data on RDN Part 2

Raymond Townsend, MD | Renal Electrolyte and Hypertension

- Global SYMPLICITY registry (GSR)
 - Largest RDN registry to date with 3-year outcomes
- SIMPLICITY HTN3 3-year outcomes
 - Despite a short-term negative outcome, data at 3 years appears promising and match GSR's pattern of increasing efficacy long term
- Patient preference study
 - Discordance between physician values and patient values and risk tolerance
 - Largest factor to RDN is physician approval
 - Expect larger patient self-referral

10:40 AM – 12:00 PM

Recorded Case (Radiofrequency Renal Denervation)

12:00 PM – 12:30 PM

Lunch

12:30 PM – 1:00 PM

Breakout Sessions With Hands on Models

1:00 PM – 1:30 PM

RDN Procedure Planning and Techniques

Jay S. Giri, MD | Cardiovascular and Vascular Medicine

- CT abd/pel
- Non-selective aortogram
- Selective renal angiography
- RDN platforms
 - Similarities
 - Femoral access
 - Sedation
 - 0.014" guidewire
 - Differences
 - 6F vs 7F
 - Targets for interventions – main vs distal
- Data comparing rRDN distal + main vs uRDN main alone appear equal in efficacy
- Emergency equipment
 - Covered stents
 - Coils



1:30 PM – 2:30 PM **Recorded Case (Ultrasound Renal Denervation)**

2:30 PM – 2:45 PM **How to Streamline Your HTN Center**

Maria Bonanni, MSN, CRNP | Medical Genetics

- AHA certification
 - Check list
- Patient centered flowsheet
 - Current process and prediction for how patients will be seen and managed once commercial

2:45 PM – 3:00 PM **Best Practices on Approaching Patients in the Office About RDN**

Debbie Cohen, MD | Renal Electrolyte and Hypertension

- How would you summarize the data that we covered and the procedures to a patient?
- What are some of the most common questions you get from patients?

3:00 PM – 3:45 PM **Future of RDN – Panel discussion**

Moderators:

Debbie Cohen, MD | Renal Electrolyte and Hypertension

Taisei Kobayashi, MD | Cardiology

Panelists:

Sandeep Aggarwal, MD | Renal Electrolyte and Hypertension

Maria Bonanni, MSN, CRNP | Medical Genetics

Jordana Cohen, MD | Renal Electrolyte and Hypertension

Matthew Denker, MD, MSCE | Renal Electrolyte and Hypertension

Debbie Cohen, MD | Renal Electrolyte and Hypertension

Jay S. Giri, MD | Cardiovascular and Vascular Medicine

Raymond Townsend, MD | Renal Electrolyte and Hypertension

- Logistical challenges – given the future of RDN being radial and utilizing more AI to include more patients
 - How do we accept this much volume?
 - Where do we focus on recruitment?
 - Who will see these patients? APPs/RN?
 - How do we penetrate traditionally marginalized groups?
 - Who will keep track of these patients?
- Penn Denervation Center
 - Patient flow
 - Patient care coordinator
 - Dedicated RDN lab

3:45 PM **Conclusion**

Debbie Cohen, MD | Renal Electrolyte and Hypertension

Taisei Kobayashi, MD | Cardiology

IN-PERSON AND VIRTUAL

Penn Invasive Hypertension Management Symposium

Friday, December 1, 2023

We strongly encourage you to register for this conference online by check or credit card at <http://upenn.cloud-cme.com/Invasivehypertension2023>

Questions? Contact us at:

penncme@pennmedicine.upenn.edu • Phone: 215-898-6400 or 215-898-8005

Please note: we are unable to accept faxed registration forms.

Please print or type

Name (First) _____ (Last) _____

Academic Degree _____

Medical Specialty _____

Affiliation (Hospital, Office, or Company) _____

Address (Affiliation or Home) _____

City _____ State _____ Zip _____

Phone _____ Fax _____

E-mail _____

REGISTRATION FEES

(pre-payment is required to be officially registered)

IN-PERSON or VIRTUAL ATTENDANCE:

- Physicians and industry employees – \$50
- Nurse practitioners, physician assistants and other healthcare professionals – \$25
- Residents, fellows and students – no fee
- Penn Medicine staff, residents, fellows, and students – no fee

PAYMENT METHOD

- If you are paying by check or credit card, please register online at <http://upenn.cloud-cme.com/Invasivehypertension2023>
- If you are paying by check, you may mail your completed registration form and check made payable to **The Trustees of the University of Pennsylvania/CME** to:
Conference Manager
Office of Continuing Medical & Interprofessional Education
Academic Programs, Penn Medicine, JMEE, SPE, 6th floor
3400 Civic Center Blvd, Bldg. 421
Philadelphia, PA 19104-5162
- Do not include any credit card information on the registration form or share via email.