



Penn Medicine

Continuing Medical and
Interprofessional Education

IN-PERSON AND VIRTUAL

ONCOLOGIST IN MY POCKET 2023



Oncologist

IN MY POCKET

CME/CE-CERTIFIED CONFERENCE

FRIDAY, MAY 12, 2023

In-Person Meeting Location

Arthur H. Rubenstein Auditorium at the
Smilow Center for Translational Research
3400 Civic Center Blvd.
Philadelphia, PA 19104

<https://upenn.cloud-cme.com/oncologistinpocket2023>



PROGRAM OVERVIEW & TARGET AUDIENCE

Care of adult patients with hematologic or oncologic malignancies is increasingly complex. Hospice and palliative care clinicians are asked to care for them earlier in the course of care, based on evidence that early palliative care improves survival, symptoms, mood, cost, and patient and caregiver satisfaction. To ensure success of upstream involvement, clinicians must be equipped to competently care for these patients and “speak the language” of the hematologist/oncologist and radiation oncologist, particularly in the outpatient setting.

This session will provide clinicians the essentials needed to approach the care of these patients, including; terminology, systemic treatment options (chemotherapy, targeted therapy, immunotherapy, CAR-T cell therapy), prognostic uncertainty, radiotherapy, expected side effects of treatments, hematologic malignancies, models of implementation and navigating relationships with hematologists/oncologists. The session will target attendees’ specific needs and questions, with real-time adjustment of the curriculum to fulfill their goals and provide appropriate resources. Upon completion of this activity, HPC clinicians will have the tools necessary to develop an approach to the care of patients with hematologic or oncologic malignancies along the continuum of cancer care.

LEARNING OBJECTIVES

Upon completion of this activity, physicians and health care providers will be able to:

- Verbalize the need for increased knowledge of topics in Hematology/Oncology
- State results of influential trials in palliative oncology
- Define and describe the language and assessment tools utilized by Hematologist/Oncologists
- List systemic treatment options and unique toxicities
- Identify prognostic challenges related to emerging therapies
- Define the role and types of radiation treatment in cancer care
- Identify and describe unique characteristics and palliative needs of hematologic malignancies
- Identify relevant characteristics of clinical trials
- State Basics of Car-T cell therapy
- Develop approaches to navigate relationships with hematology/oncology, radiation oncology providers
- State models of integrating palliative care into hematology/oncology practice



ACCREDITATION



JOINTLY ACCREDITED PROVIDER™
INTERPROFESSIONAL CONTINUING EDUCATION

In support of improving patient care, Penn Medicine is jointly accredited by the Accreditation Council for Continuing Medical Education (ACCME), the Accreditation Council for Pharmacy Education (ACPE), and the American Nurses Credentialing Center (ANCC), to provide continuing education for the healthcare team.

DESIGNATION OF CREDIT

Physicians: Penn Medicine designates this live activity for a maximum of 5.5 *AMA PRA Category 1 Credits™*. Physicians should claim only the credit commensurate with the extent of their participation in the activity.

Nurses: This program provides 5.5 NCPD hours.

Physician Assistants: Penn Medicine has been authorized by the American Academy of PAs (AAPA) to award AAPA Category 1 CME credit for activities planned in accordance with AAPA CME Criteria. This activity is designated for 5.5 AAPA Category 1 CME credits. PAs should only claim credit commensurate with the extent of their participation.

Pharmacists: This knowledge based activity is approved for 5.5 ACPE contact hours of continuing pharmacy education credit. UAN JA0000324-0000-23-009-L04-P

Certificates and Transcripts: After the conference has concluded, all participants will receive a follow-up email with instructions and a link with instructions on how to claim their credit. Once participants submit the request for credit, the earned credits will be available for viewing on your transcript or available for printing at <https://upenn.cloud-cme.com>. Please note that the individual certificate will not be mailed.

LIVE AND VIRTUAL PRESENTATIONS

The Oncologist in my Pocket Course will be held Friday, May 12, 2023 by in-person or live-stream (virtual) attendance. The live and virtual presentations will follow the scheduled agenda in real time (EST).

TO ATTEND IN-PERSON:

Meeting Location

Arthur H. Rubenstein Auditorium at the Smilow Center for Translational Research
3400 Civic Center Blvd., Philadelphia, PA 19104

TO ATTEND BY LIVE-STREAM (VIRTUAL):

Attendees who are registered to attend virtually will receive an email including the link to join the symposium 48 hours in advance. All virtual attendees will be required to sign into the meeting using your first name, last name and email address in order to be marked as attended and receive credit.



IN-PERSON AND LIVE-STREAM REGISTRATION FEES:

Please register online at <https://upenn.cloud-cme.com/oncologistinpocket2023>.

The fees to attend are as follows: \$75 for physicians and industry attendees, \$50 for nurse practitioners, physician assistants and other healthcare professionals, and \$25 for residents, fellows and students.

IN-PERSON ATTENDANCE:

All pre-registered, in-person attendees will receive access to the conference, attendee booklet, continental breakfast, lunch and breaks. Registration also includes access to view the presentations online for one year. Due to the COVID-19 pandemic, walk-ins are discouraged. Please be sure to register in advance.

LIVE-STREAM (VIRTUAL) ATTENDANCE:

All pre-registered virtual attendees will receive an email that includes a link with instructions to sign-in and join the virtual conference 48 hours preceding the symposium, as well as the attendee booklet (downloadable PDF). Registration also includes access to view the presentations online for one year.

Need to Register by Mail?

Please note: mailed registrations can take up to 5-10 business days before they are received. We encourage all attendees to register online. See the registration form for mailing instructions. All registrations will be confirmed by email as long as your registration is received no later than April 28, 2023.

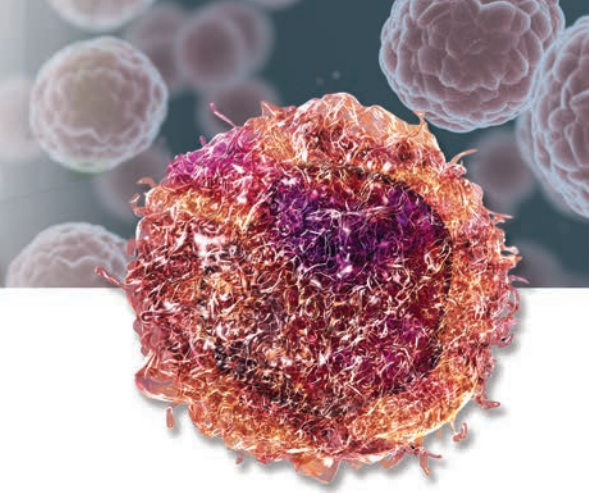
CANCELLATION POLICY

In order to process refunds for course withdrawals, cancellations must be received in writing by April 28, 2023 (subject to a service charge equivalent to 10% of the registration fee, but no less than \$25.00). No refunds will be issued thereafter.

The University reserves the right to cancel or postpone any course due to unforeseen circumstances. In the event of cancellation or postponement, the University will refund registration fees but is not responsible for related costs or expenses to participants, including cancellation fees assessed by hotels, airlines, and travel agencies.

DISCLOSURES

Penn Medicine, Office of Continuing Medical and Interprofessional Education, adheres to the *ACCME Standards for Commercial Support*. Faculty disclosure information will be made available in the conference materials and syllabus. Faculty members are also expected to disclose to participants any discussions of off-label and/or investigational uses of pharmaceutical products within their presentations.



FACULTY

COURSE DIRECTOR

Shanthi Sivendran, MD, MSCR

Clinical Associate Professor of Medicine
Division Chief, Hematology/Oncology
Penn Medicine Lancaster General Health
Lancaster, PA

COURSE CO-DIRECTOR

Kristina Newport, MD

Associate Professor of Medicine
Chief, Palliative Care
Penn State College of Medicine
Hershey, PA

COURSE SPEAKERS

Elizabeth Gilbert PA-C

Physician Assistant
Penn Medicine
Philadelphia, PA

Pallavi Kumar, MD, MPH

Assistant Professor of Clinical Medicine
Director, Oncology Palliative Care
Penn Medicine
Philadelphia, PA

Alyssa Langi, NP

Nurse Practitioner
Penn Medicine
Philadelphia, PA

Thomas Leblanc, MD, MA, MHS

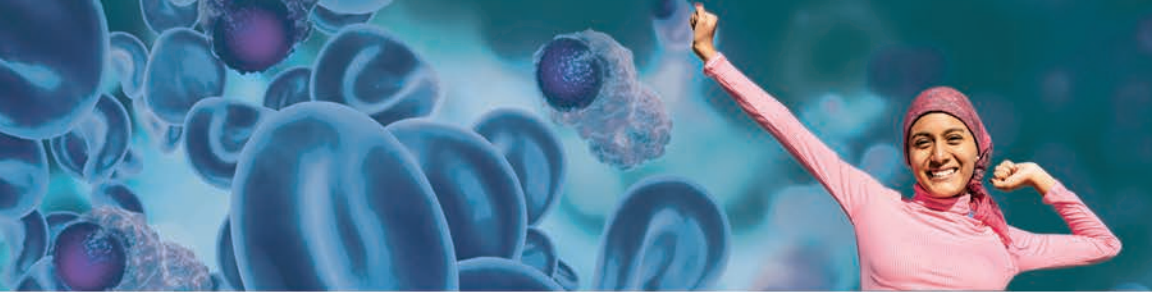
Associate Professor of Medicine
Associate Professor in Population
Health Sciences
Duke University School of Medicine
Durham, NC

Joshua A. Jones, MD, MA

Associate Professor of
Clinical Radiation Oncology
Chief, Palliative Service, Radiation Oncology
Director, Spine Radiotherapy Program
Radiation Oncology
Penn Medicine
Philadelphia, PA

SERVICES FOR THE DISABLED If special arrangements are required for an individual with a disability to participate this meeting, please contact the Office of Continuing Medical and Interprofessional Education no later than April 28, 2023, at 215-898-6400.

NONDISCRIMINATION STATEMENT The University of Pennsylvania values diversity and seeks talented students, faculty, and staff from diverse backgrounds. The University of Pennsylvania does not discriminate on the basis of race, sex, sexual orientation, gender identity, religion, color, national or ethnic origin, age, disability, or status as a Vietnam Era Veteran or disabled veteran in the administration of educational policies, programs or activities; admissions policies; scholarship and loan awards; athletic, or other University administered programs or employment. Questions or complaints regarding this policy should be directed to Executive Director, Office of Affirmative Action and Equal Opportunity Programs, 3600 Chestnut Street, Sansom Place East Suite 228, Philadelphia, PA 19104-6106 or 215-898-6993 (Voice) or 215-898-7803 (TDD). www.upenn.edu/affirm-action.



ONCOLOGIST IN MY POCKET 2023

AGENDA | FRIDAY, MAY 12, 2023

- 7:45 AM – 8:00 AM **In-person Sign-in**
Sign into Virtual Platform
- 7:45 AM – 8:00 AM **Virtual Attendee Sign-in**
(Broadcast goes live at 8:00 am)
- 8:00 AM – 8:20 AM **Why do you Need an Oncologist in Your Pocket?**
Kristina Newport, MD
- Explain the need for increased knowledge of topics in Hematology/Oncology
 - Describe results of influential trials in palliative oncology
(Virtual Moderator – *Shanthi Sivendran, MD, MSCR*)
- 8:20 AM – 10:00 AM **Getting in the Brain of the Medical Oncologist**
Shanthi Sivendran, MD, MSCR
- Define and describe the language and assessment tools utilized by Hematologist/Oncologists
 - Identify prognostic challenges related to existing and emerging therapies.
 - Principles of systemic treatment in advanced cancer
(Virtual Moderator – *Kristina Newport, MD*)
- 10:00 AM – 10:15 AM Bio Break
- 10:15 AM – 11:00 AM **What is the Deal With Palliative Radiation?**
Joshua Jones, MD, MA
- Define the role and types of radiation treatment in cancer care
(Virtual Moderator – *Kristina Newport, MD*)
- 11:00 AM – 12:00 PM **What's Different About Blood Cancers?**
Thomas Leblanc, MD, MA, MHS
- Identify and describe unique characteristics and palliative needs of hematologic malignancies
 - Identify relevant characteristics of clinical trials
 - Describe basics of Car-T cell therapy
(Virtual Moderator – *Kristina Newport, MD*)
- 12:00 PM – 12:15 PM Bio Break
- 12:15 PM – 1:00 PM **Special Topics – Challenges in Palliative Oncology Panel Discussion**
Kristina Newport, MD – Leader
Panel: Shanthi Sivendran MD, MSCR, Joshua Jones, MD, MA
Thomas Leblanc, MD, MA, MHS, Elizabeth Gilbert PA-C
Pallavi Kumar, MD, MPH, Alyssa Langi, NP
- Long term survivors with metastatic cancer
 - Meeting palliative oncology needs with a limited workforce
(Virtual Moderator – *Shanthi Sivendran, MD, MSCR*)

ONCOLOGIST IN MY POCKET 2023

FRIDAY, MAY 12, 2023

We strongly encourage you to register for this conference online by check or credit card at <https://upenn.cloud-cme.com/oncologistinpocket2023>

Questions? Contact us at:

penncme@penmedicine.upenn.edu • Phone: 215-898-6400 or 215-898-8005

Please note: we are unable to accept faxed registration forms.

Please print or type

Name (First) _____ (Last) _____

Academic Degree _____

Medical Specialty _____

Affiliation (Hospital, Office, or Company) _____

Address (Affiliation or Home) _____

City _____ State _____ Zip _____

Phone _____ Fax _____

E-mail _____

REGISTRATION FEES

(pre-payment is required to be officially registered)

IN-PERSON/LIVE-STREAM (VIRTUAL) ATTENDANCE:

- Physicians and industry employees – \$75
- Nurse practitioners, physician assistants and other healthcare professionals – \$50
- Residents, fellows and students – \$25

PAYMENT METHOD

- If you are paying by check or credit card, please register online at <https://upenn.cloud-cme.com/oncologistinpocket2023>
- If you are paying by check, you may mail your completed registration form and check made payable to **The Trustees of the University of Pennsylvania/CME** to:
 - Conference Manager
 - Office of Continuing Medical & Interprofessional Education
 - Academic Programs, Penn Medicine, JMEC, SPE, 6th floor
 - 3400 Civic Center Blvd, Bldg. 421
 - Philadelphia, PA 19104-5162
- Do not include any credit card information on the registration form or share via email.