



Penn Medicine

Continuing Medical and
Interprofessional Education

IN-PERSON AND VIRTUAL

PENN NEUROMUSCULAR SYMPOSIUM 2024

CME-ACCREDITED SYMPOSIUM

SATURDAY, MAY 18, 2024

7:45 AM – 3:30 PM EDT

**Arthur H. Rubenstein Auditorium at the
Smilow Center for Translational Research
3400 Civic Center Blvd.
Philadelphia, PA 19104**

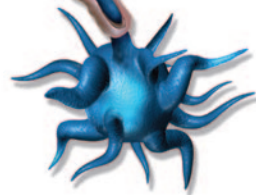


<https://upenn.cloud-cme.com/neuromuscular2024>



PROGRAM OVERVIEW & TARGET AUDIENCE

In the last few years, there has been dramatic advancement in the diagnostic tools and treatment options available for neuromuscular disorders. While this is a welcome development, it may be challenging for neurologists taking care of patients with neuromuscular disorders to keep up-to-date with all of these advances. The purpose of the *Penn Neuromuscular Symposium* is to provide both a basic approach to patients with these disorders as well as an update on novel therapeutic agents and future directions. The symposium will also explain how to enhance collaboration and knowledge exchange among neurologists and other healthcare professionals taking care of this unique patient population, which will also help facilitate enrollment in exciting clinical trials here at Penn.



This course has been developed to meet the educational needs of neurologists, other physicians and associated professionals with an interest in neuromuscular medicine.

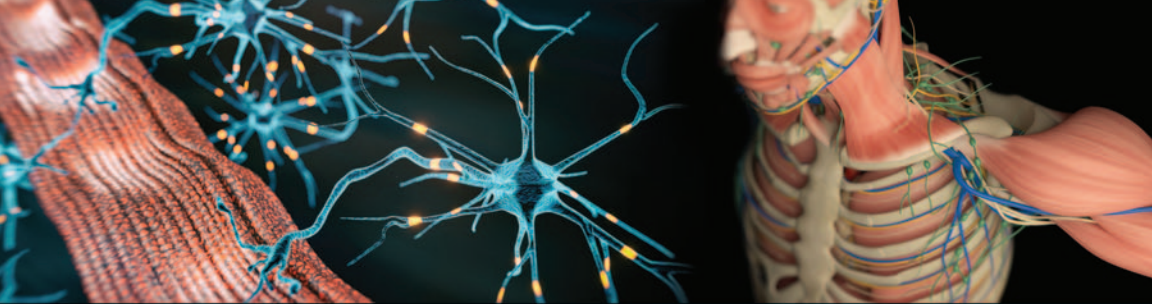
LEARNING OBJECTIVES

Upon conclusion of this educational activity, the participant will be better able to:

- Describe novel treatment in myasthenia gravis
- Discuss new methods to diagnose and treat neuropathy in amyloidosis
- Discuss different types of demyelinating neuropathies and how to manage them
- Describe novel treatments for people with ALS
- Discuss new genetic neuropathies and drug development
- Apply antibody testing in inflammatory myopathies and describe novel therapies for inflammatory myopathies
- Discuss gene therapy for hereditary myopathies, including FSHD
- Interpret NCS and EMG findings.

HOSTING DEPARTMENT

The *Penn Neuromuscular Symposium 2024* is hosted by the Department of Neurology at Penn Medicine.



ACCREDITATION



In support of improving patient care, Penn Medicine is jointly accredited by the Accreditation Council for Continuing Medical Education (ACCME), the Accreditation Council for Pharmacy Education (ACPE), and the American Nurses Credentialing Center (ANCC), to provide continuing education for the healthcare team.

DESIGNATION OF CREDIT

Physicians: Penn Medicine designates this live activity for a maximum of 5.25 *AMA PRA Category 1 Credits™*. Physicians should claim only the credit commensurate with the extent of their participation in the activity.

Physician Assistants: AAPA accepts certificates of participation for educational activities certified for *AMA PRA Category 1 Credit™* from organizations accredited by ACCME or a recognized state medical society. PAs may receive a maximum of 5.25 Category 1 credits for completing this activity.

ABS MOC: Successful completion of this CME activity, which includes participation in the evaluation component, enables the learner to earn 5.25 credits toward the CME and Self-Assessment requirements of the American Board of Surgery's Continuous Certification program. It is the CME activity provider's responsibility to submit learner completion information to ACCME for the purpose of granting ABS credit.

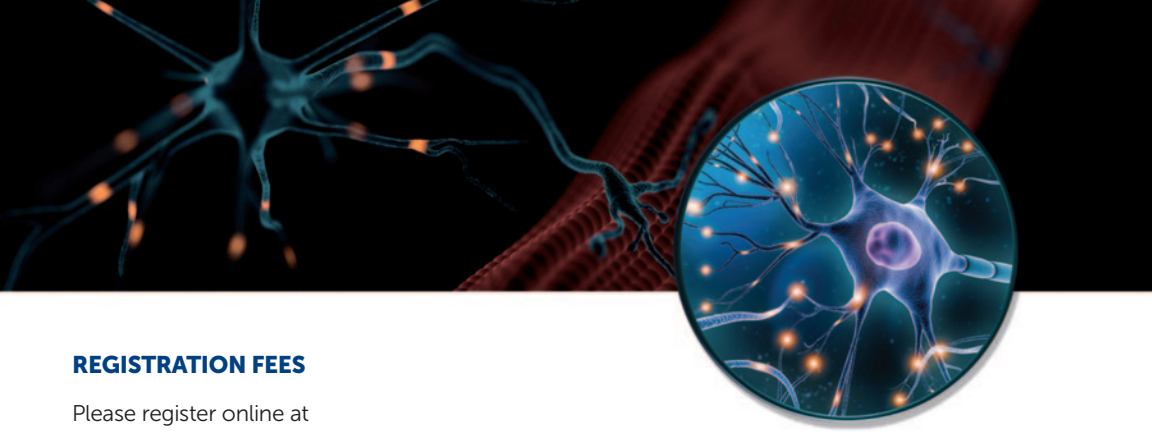
Certificates and Transcripts: After the conference has concluded, all participants will receive a follow-up email with instructions and a link with instructions on how to claim their credit. Once participants submit the request for credit, the earned credits will be available for viewing on your transcript or available for printing at <https://upenn.cloud-cme.com>. Please note that the individual certificate will not be mailed.

LIVE AND VIRTUAL PRESENTATIONS

Penn Neuromuscular Symposium 2024 will be held Saturday, May 18, 2024 by in-person or live-stream (virtual) attendance. The live and virtual presentations will follow the scheduled agenda in real time (EDT).

IN PERSON MEETING LOCATION

Arthur H. Rubenstein Auditorium at the Smilow Center for Translational Research
3400 Civic Center Blvd., Philadelphia, PA 19104



REGISTRATION FEES

Please register online at
<https://upenn.cloud-cme.com/neuromuscular2024>.

In-person Registration Fees

The fees to attend in-person are as follows: \$125 for physicians and industry attendees, \$75 for nurse practitioners, physician assistants and other healthcare professionals. There is no fee for residents, fellows, students and Penn Medicine Neurology employees, faculty and staff to attend.

All pre-registered, in-person attendees will receive access to the conference, attendee booklet, continental breakfast, lunch and breaks. Registration also includes access to view the presentations online for one year. Walk-ins are discouraged. Please be sure to register in advance.

Live-stream Registration Fees

The fees to attend virtually are as follows: \$100 for physicians and industry attendees, \$50 for nurse practitioners, physician assistants and other healthcare professionals. There is no fee for residents, fellows, students and Penn Medicine Neurology employees, faculty and staff to attend.

All pre-registered virtual attendees will receive an email that includes a link with instructions to sign-in and join the virtual conference 48 hours preceding the symposium, as well as the attendee booklet (downloadable PDF). Registration also includes access to view the presentations online for one year.

Need to Register by Mail?

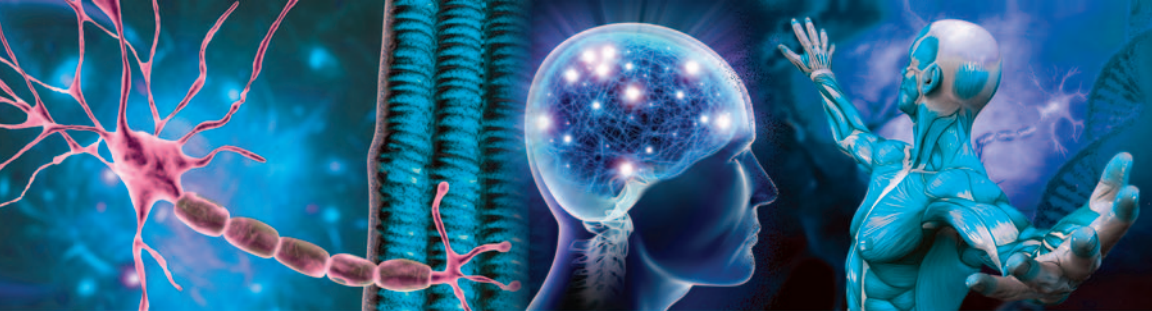
Please note: mailed registrations may take more than 5-10 business days before they are received because we continue to experience longer delays in receiving mail. We encourage all attendees to register online. See the registration form for mailing instructions. All registrations will be confirmed by email as long as your registration is received no later than May 17, 2024.

BE SURE TO CHECK YOUR SPAM BOX FOR EMAILS REGARDING THIS CONFERENCE.

CANCELLATION POLICY

In order to process refunds for course withdrawals, cancellations must be received in writing by May 4, 2024 (subject to a service charge equivalent to 10% of the registration fee, but no less than \$25.00). No refunds will be issued thereafter.

The University reserves the right to cancel or postpone any course due to unforeseen circumstances. In the event of cancellation or postponement, the University will refund registration fees but is not responsible for related costs or expenses to participants, including cancellation fees assessed by hotels, airlines, and travel agencies.



**Directions to Perelman Center for Advanced Medicine/
Smilow Center for Translational Research:**

The Arthur H. Rubenstein Auditorium at the Smilow Center for Translational Research is located on floor C of the Perelman Center for Academic Research, 3400 Civic Center Blvd., Philadelphia, PA. We strongly recommend you use GPS for exact directions to and from your starting point or if you prefer, take public transportation to and from campus, please visit <http://www.upenn.edu/services/transportation> for options.

Parking: On Saturday's ONLY, attendees may park in the the Perelman Center for Advanced Medicine garage, 3400 Civic Center Blvd is open to those attending the conference. Parking is \$20 per day. Parking fees will not be validated or reimbursed.

Overnight Accommodation within Walking Distance:

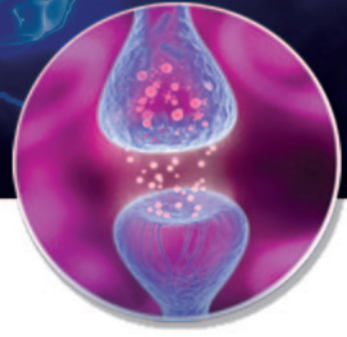
The Study at University City Hotel
20 South 33rd Street
Philadelphia, PA 19104
215-387-1400

There is no room block or discounted rate available and rooms are subject to availability.

SERVICES FOR THE DISABLED If special arrangements are required for an individual with a disability to attend this meeting, please contact the Office of Continuing Medical and Interprofessional Education no later than May 4, 2024, at 215-898-6400.

NONDISCRIMINATION STATEMENT The University of Pennsylvania values diversity and seeks talented students, faculty, and staff from diverse backgrounds. The University of Pennsylvania does not discriminate on the basis of race, sex, sexual orientation, gender identity, religion, color, national or ethnic origin, age, disability, or status as a Vietnam Era Veteran or disabled veteran in the administration of educational policies, programs or activities; admissions policies; scholarship and loan awards; athletic, or other University administered programs or employment. Questions or complaints regarding this policy should be directed to Executive Director, Office of Affirmative Action and Equal Opportunity Programs, 3600 Chestnut Street, Sansom Place East Suite 228, Philadelphia, PA 19104-6106 or 215-898-6993 (Voice) or 215-898-7803 (TDD). www.upenn.edu/affirm-action.

FACULTY



CONFERENCE DIRECTOR

Chafic Karam, MD

Associate Professor of Neurology
Penn Medicine
Philadelphia, PA

SPEAKERS

Jeffrey C. Allen, MD

Associate Professor of Neurology
University of Minnesota Medical School
Minneapolis, MN

Karissa Gable, MD

Associate Professor of Neurology
Duke University School of Medicine
Durham, NC

Sami L. Khella, MD

Professor of Clinical Neurology
Chief, Department of Neurology
Penn Presbyterian Medical Center
Philadelphia, PA

Paul McIntosh, MD

Assistant Professor of Clinical Neurology
Penn Medicine
Philadelphia, PA

Sabrina Paganoni, MD, PhD

Physician Scientist
Co-Director, MGH Neurological Clinical
Research Institute (NCRI)
Massachusetts General Hospital
Boston, MA

Colin Quinn, MD

Professor of Clinical Neurology
Director, CMJC VAMC ALS Clinic
Co-Director, Penn Neuromuscular Center
for Advanced Therapeutics (PNCAT)
Associate Director, Muscular Dystrophy
Association (MDA) Clinic Associate
Penn Medicine
Philadelphia, PA

Raymond S. Price, MD

Professor of Clinical Neurology
Director, Neurology Residency
Co-Director, Neurohospitalist Division
Penn Medicine
Philadelphia, PA

Steve Scherer, MD, PhD

J. Ray Van Meter Professor of Neurology
Vice Chair for Academic Development,
Department of Neurology
Penn Medicine
Philadelphia, PA

CASE PRESENTERS

Michael Bear, MD

Assistant professor of Neurology
Co-director, Penn Comprehensive ALS Center
Penn Medicine
Philadelphia, PA

Samuel Carrell, MD, PhD

Neuromuscular Fellow
Penn Medicine
Philadelphia, PA

Madeline Singer, MD

Instructor A of Neurology
Penn Medicine
Philadelphia, PA

Taha Qarni, MD

Neuromuscular Fellow
Penn Medicine
Philadelphia, PA

DISCLOSURES

Penn Medicine, Office of Continuing Medical and Interprofessional Education, adheres to the *ACCME Standards for Integrity and Independence in Accredited Continuing Education*. Faculty members are also expected to disclose to participants any discussions of off-label and/or investigational uses of pharmaceutical products or devices within their presentations.



AGENDA

- 7:45 AM – 8:20 AM In-Person Registration and Continental Breakfast
8 AM – 8:20 AM Sign into the Virtual Platform (*Virtual Attendees Only*)
8:20 AM – 8:30 AM **Welcome**
Chafic Karam, MD

MORNING SESSION

- 8:30 AM – 9:00 AM **Update on ALS Treatment and Management**
Sabrina Paganoni MD, PhD
- 9:00 AM – 9:20 AM **Case Presentations**
Taha Qarni, MD
- 9:20 AM – 9:50 AM **DR. ARTHUR ASBURY ENDOWMENT LECTURE:**
CIDP and MMN: Updates in Diagnosis and Management
Jeffrey C. Allen, MD
- 9:50 AM – 10:10 AM Break
- 10:10 AM – 10:40 AM **Updates in Myasthenia Gravis**
Karissa Gable, MD
- 10:40 AM – 11:00 AM **Case Presentations**
Samuel Carrell, MD, PhD
- 11:00 AM – 11:20 AM **Updates in Diagnosis and Management of Amyloid Neuropathy**
Sami L. Khella, MD
- 11:20 AM – 11:40 AM **Case Presentations**
Michael Bear, MD
- 11:40 AM – 12:00 PM **Updates in CMT**
Steve Scherer, MD, PhD
- 12:00 PM – 1:00 PM Lunch

AFTERNOON SESSION

- 1:00 PM – 1:30 PM **Inflammatory Myopathies**
Paul McIntosh, MD
- 1:30 PM – 1:50 PM **Case Presentations**
Madeline Singer, MD
- 1:50 PM – 2:20 PM **Update in Treatment of Hereditary Myopathies Including FSHD**
Colin Quinn, MD
- 2:20 PM – 2:40 PM Break
- 2:40 PM – 3:10 PM **Clinical-Electrophysiological Correlations in NM disorders**
Raymond Price MD
- 3:10 PM – 3:30 PM **Questions & Closing Remarks**
Chafic Karam, MD

IN-PERSON AND VIRTUALPENN NEUROMUSCULAR
SYMPOSIUM 2024**SATURDAY, MAY 18, 2024****7:45 AM – 3:30PM EDT**

We strongly encourage you to register for this conference online by check or credit card at <https://upenn.cloud-cme.com/neuromuscular2024>

Questions? Contact us at:

penncme@penncme.upenn.edu • Phone: 215-898-6400 or 215-898-8005

Please note we are unable to accept faxed registration forms.

Please print or type

Name (First) _____ (Last) _____

Academic Degree _____

Medical Specialty _____

Affiliation (Hospital, Office, or Company) _____

Address (Affiliation or Home) _____

City _____ State _____ Zip _____

Phone _____ Fax _____

E-mail _____

REGISTRATION FEES

(pre-payment is required to be officially registered)

IN-PERSON ATTENDANCE:

- Physicians and industry employees – \$125
- Nurse practitioners, nurses, pharmacists, physician assistants, researchers and other healthcare professionals – \$75
- There is no fee for residents, fellows, students and Penn Medicine Neurology employees, faculty and staff to attend.

LIVE-STREAM (VIRTUAL) ATTENDANCE:

- Physicians and industry employees – \$100
- Nurse practitioners, nurses, pharmacists, physician assistants, researchers and other healthcare professionals – \$50
- There is no fee for residents, fellows, students and Penn Medicine Neurology employees, faculty and staff to attend.

PAYMENT METHOD

- If you are paying by check or credit card, please register online at <https://upenn.cloud-cme.com/neuromuscular2024>
- If you are paying by check, you may mail your completed registration form and check made payable to **The Trustees of the University of Pennsylvania/CME** to:
 - Conference Manager
 - Office of Continuing Medical & Interprofessional Education
 - Academic Programs, Penn Medicine, JMEC, SPE, 6th floor
 - 3400 Civic Center Blvd, Bldg. 421
 - Philadelphia, PA 19104-5162
- Do not include any credit card information on the registration form or share via email.