



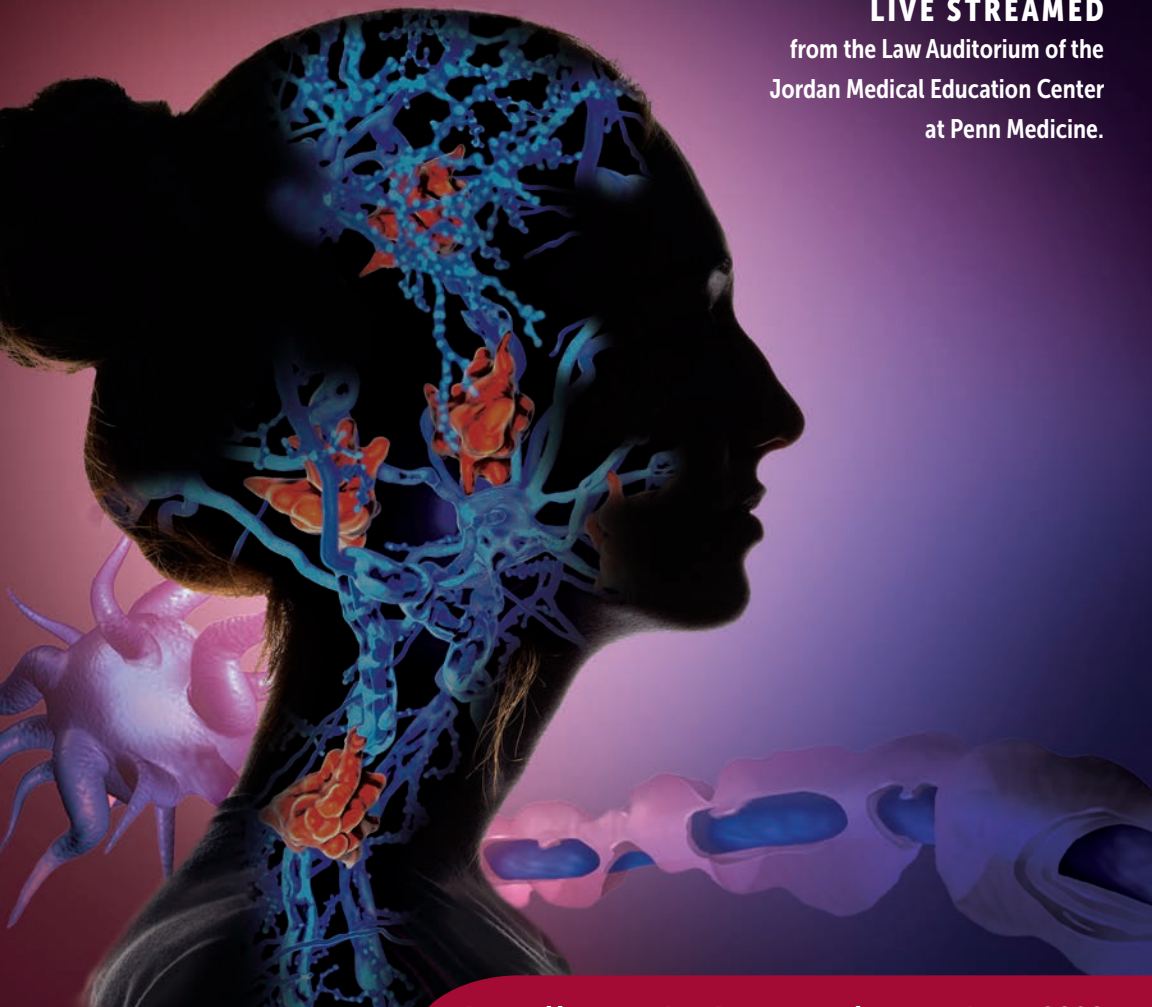
Penn Medicine
Continuing Medical and
Interprofessional Education

ON THE BASIS OF SEX: WOMEN'S ISSUES IN NEUROLOGY AND MULTIPLE SCLEROSIS

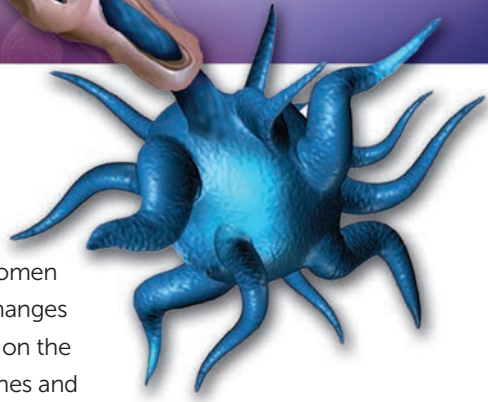
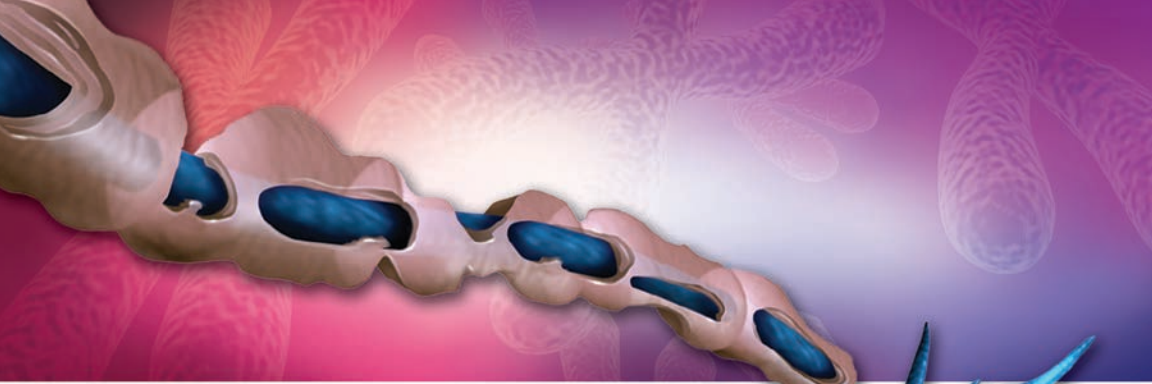
CME/CNE-ACCREDITED CONFERENCE

FRIDAY, MAY 8, 2020

This conference will be
LIVE STREAMED
from the Law Auditorium of the
Jordan Medical Education Center
at Penn Medicine.



<https://upenn.cloud-cme.com/womensissues2020>



PROGRAM OVERVIEW & TARGET AUDIENCE

There are many neurologic disease states that affect women differently than men due to issues such as hormonal changes across the life-span as well as the effects of pregnancy on the nervous system. We aim to cover the impact of hormones and pregnancy and the post-partum period on neurologic disease processes including headache, epilepsy, neurovascular and cognitive disorders.

Women living with multiple sclerosis (MS) have many unique issues that arise during their life-span. There are considerations that must be addressed from adolescence through late adulthood. These issues include family planning, the impact of pregnancy on MS, use of MS treatments during pregnancy and breastfeeding, the impact of menopause on MS, and the management of bladder and sexual dysfunction.

The course is being taught by experts in the field of women's health issues in neurology and multiple sclerosis.

This activity is designed for neurologists, internists, family practice physicians, obstetrician/gynecologists, women's health specialists, psychiatrists and psychologists, endocrinologists, rehabilitation medicine physicians, nurses, nurse practitioners, physician assistants, pharmacists, social workers, physical and occupational therapists, residents, fellows, students and others interested.

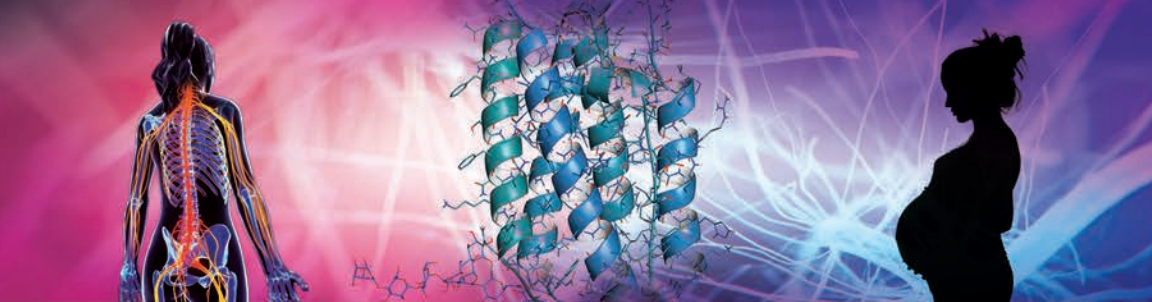
LEARNING OBJECTIVES

Upon conclusion of this educational activity, the participant should be able to:

- Identify and treat neurologic disorders during pregnancy and in association with women's issues across the life-span.
- Describe the impact of pregnancy, the post-partum period, and breastfeeding in neurologic disorders.
- Attain the knowledge to address the medical needs of women living with neurologic disorders.
- Acquire the skills to manage multiple sclerosis symptoms across the life-span.
- Learn how to approach neuromyelitis optica and myelin oligodendrocyte glycoprotein-antibody disorders in women across their life-spans and in particular during pregnancy.

HOSTING DEPARTMENT

On the Basis of Sex: Women's Issues in Neurology and Multiple Sclerosis is hosted by the Center for NeuroInflammation and Experimental Therapeutics and the Department of Neurology at Penn Medicine.



ACKNOWLEDGMENT

This program was made possible by generous support through the **Board of Women Visitors** of the Hospital of the University of Pennsylvania.

ACCREDITATION



In support of improving patient care, Penn Medicine is jointly accredited by the Accreditation Council for Continuing Medical Education (ACCME), the Accreditation Council for Pharmacy Education (ACPE), and the American Nurses Credentialing Center (ANCC), to provide continuing education for the healthcare team.

DESIGNATION OF CREDIT

Physicians: Penn Medicine designates this live activity for a maximum of 7.5 *AMA PRA Category 1 Credits*[™]. Physicians should claim only the credit commensurate with the extent of their participation in the activity.

Nurses: This program provides 7.5 contact hours.

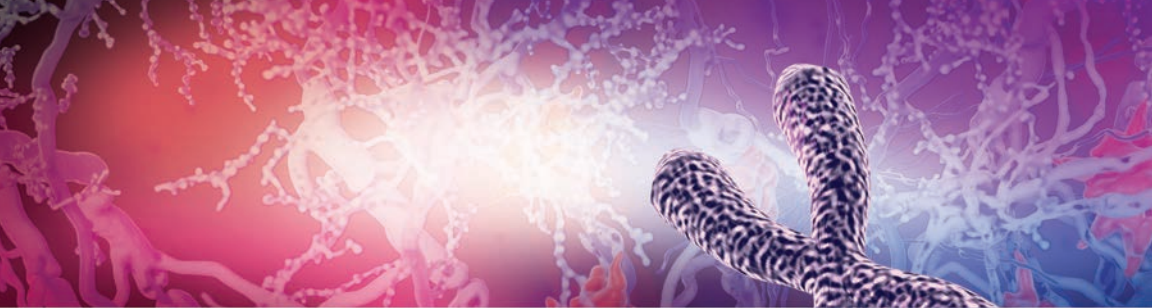
Pharmacists: This knowledge-based activity is approved for 7.5 ACPE contact hours of continuing pharmacy education credit. JA0000324-0000-20-017-L01-P.

Physician Assistants: AAPA accepts certificates of participation for educational activities certified for *AMA PRA Category 1 Credit*[™] from organizations accredited by ACCME or a recognized state medical society. PAs may receive a maximum of 7.5 Category 1 credits for completing this activity.

Certificates and Transcripts: After the conference has concluded, all participants will receive a follow-up email with instructions and a link with instructions on how to claim their credit. Once participants submit the request for credit, the earned credits will be available for viewing on a transcript or available for printing at <https://upenn.cloud-cme.com>. Please note that the individual certificate will not be mailed.

DISCLOSURES

Penn Medicine, Office of Continuing Medical and Interprofessional Education, adheres to the *ACCME Standards for Commercial Support*. Faculty and planners disclosure information will be made available in the conference materials and syllabus. Faculty members are also expected to disclose to participants any discussions of off-label and/or investigational uses of pharmaceutical products within their presentations.



MEETING LOCATION

On the Basis of Sex: Women's Issues in Neurology and Multiple Sclerosis will be held on Friday, May 8, 2020 by live stream only. In-person attendance is not permitted for this conference. This conference will follow the scheduled agenda in real time and not be recorded for later viewing.

REGISTRATION FEES

The registration fees for *On the Basis of Sex: Women's Issues in Neurology and Multiple Sclerosis* are \$95 for physicians and industry employees, \$75 for nurse practitioners, physician assistants & other healthcare professionals, and \$25 for residents, fellows & students. The registration fee for Penn Medicine and affiliates, faculty and staff is \$55.

The registration fee includes live stream access to the conference and access to view the presentations (slides) online. In-person attendance is not permitted for this conference.

All pre-registered attendees will receive a link with a unique username, password and instructions that will allow attendees to sign-in and participate in the live conference.

If you are registering with a credit card or check, please register online at <https://upenn.cloud-cme.com/womensissues2020>. We cannot accept faxed or mailed registration forms with credit card information. To pay by check, complete your registration online and mail a copy of your confirmation email with your check.

See the registration form for mailing information. **Please note:** mailed registrations can take up to 5-10 business days before they are received. All registrations will be confirmed by email as long as your registration is received no later than May 6, 2020.

SERVICES FOR THE DISABLED If special arrangements are required for an individual with a disability to attend this meeting, please contact the Office of Continuing Medical and Interprofessional Education no later than April 24, 2020, at 215-898-6400.

NONDISCRIMINATION STATEMENT The University of Pennsylvania values diversity and seeks talented students, faculty, and staff from diverse backgrounds. The University of Pennsylvania does not discriminate on the basis of race, sex, sexual orientation, gender identity, religion, color, national or ethnic origin, age, disability, or status as a Vietnam Era Veteran or disabled veteran in the administration of educational policies, programs or activities; admissions policies; scholarship and loan awards; athletic, or other University administered programs or employment. Questions or complaints regarding this policy should be directed to Executive Director, Office of Affirmative Action and Equal Opportunity Programs, 3600 Chestnut Street, Sansom Place East Suite 228, Philadelphia, PA 19104-6106 or 215-898-6993 (Voice) or 215-898-7803 (TDD), www.upenn.edu/affirm-action.



FACULTY

The Course Directors and Speakers hold academic and/or clinical titles from the Perelman School of Medicine at the University of Pennsylvania and Penn Medicine Philadelphia, PA

CONFERENCE DIRECTOR

Dina Jacobs, MD

Associate Professor of Neurology
Associate Director Multiple Sclerosis Center

CONFERENCE CO-DIRECTORS

Sona Narula, MD

Assistant Professor of Clinical Neurology

Vanessa L. Zimmerman, MSN, RN, MSCN

Clinical MS Nurse

SPEAKERS

Amit Bar-Or, MD, FRCPC

Melissa and Paul Anderson
Distinguished Professor
Director, Center for NeuroInflammation
and Experimental Therapeutics
Chief, Multiple Sclerosis Division

Danielle Becker, MD, MS

Assistant Professor of Clinical Neurology

Rachel B. Brandstadter, MD

Assistant Professor of Clinical Neurology

Christyn Edmundson, MD

Assistant Professor of Clinical Neurology

Ryan Fuller, PharmD

Clinical Pharmacist
Penn MS Center

Alhambra Frarey, MD, MSHP

Assistant Professor of Obstetrics & Gynecology

Meghan Garabedian, MSN, CRNP, MSCN

Nurse Practitioner

Katherine Hamilton, MD

Assistant Professor of Neurology

Donna Kurowski George, MD

Assistant Professor of Neurology

Sara Manning-Peskin, MD

Fellow in Neurology

Kristina R. Patterson, MD, PhD

Instructor A of Neurology

Caitlin Pileggi, MSN, CRNP, MSCN

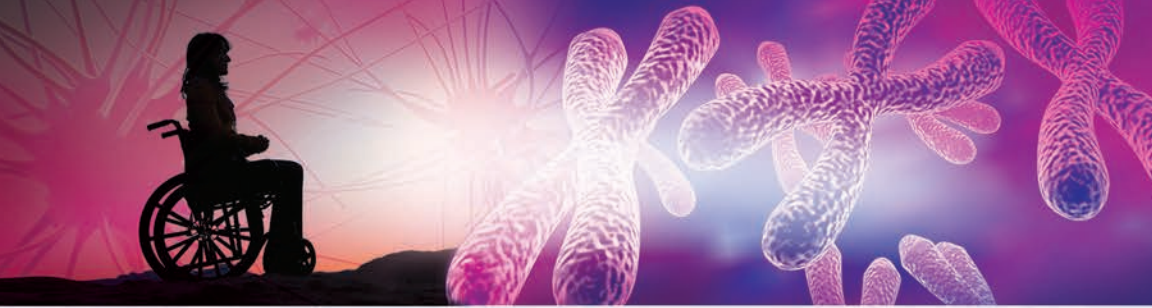
Nurse Practitioner

Ariana L. Smith, MD

Associate Professor of Urology in Surgery
Director, Pelvic Medicine and
Reconstructive Surgery

Bethany Thomas, CRNP, MSN

Nurse Practitioner



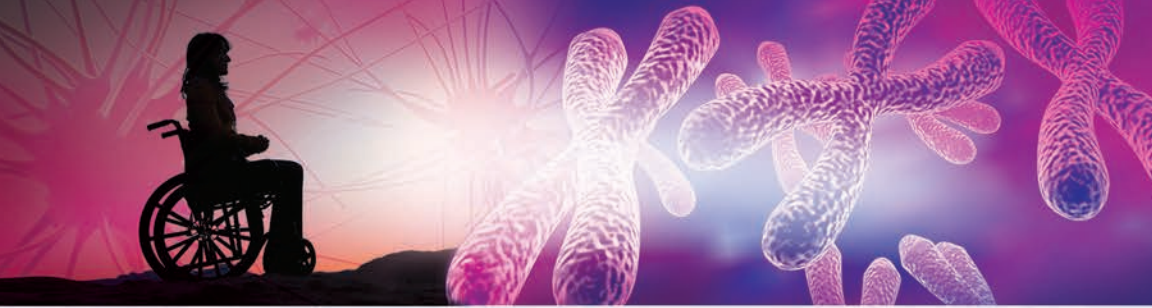
ON THE BASIS OF SEX:

WOMEN'S ISSUES IN NEUROLOGY AND MULTIPLE SCLEROSIS

AGENDA

FRIDAY, MAY 8, 2020

- 7:30 AM – 8:00 AM **Live Stream Sign-in**
- 8:00 AM – 8:10 AM **Welcome & Introduction**
Amit Bar-Or, MD, FRCPC and Dina Jacobs, MD
- 8:10 AM – 8:40 AM **Women's Issues in Neuromuscular Disease**
Christyn Edmundson, MD
- 8:40 AM – 9:10 AM **Epilepsy Management in Pregnancy and Across the Age-Span in Women**
Danielle Becker, MD
- 9:10 AM – 9:40 AM **Cognitive Issues in Women**
Sara Manning-Peskin, MD
- 9:40 AM – 10:00 AM **Break**
- 10:00 AM – 10:30 AM **Management of Pregnancy and Hormonal Associated Headaches**
Katherine Hamilton, MD
- 10:30 AM – 11:00 AM **Woman's Issues in Neurovascular Disease**
Donna George, MD
- 11:00 AM – 11:30 AM **Birth Control and Menopause in the Context of Neurologic Disorders**
Alhambra Frarey, MD, MSHP
- 11:30 AM – 12:00 PM **Panel Discussion**
Danielle Becker, MD, Alhambra Frarey, MD, MSHP, Donna George, MD, Katherine Hamilton, MD and Bethany Thomas, CRNP, MSN
- 12:00 PM – 12:30 PM **Lunch**
- 12:30 PM – 1:10 PM **Pregnancy, Breastfeeding, Menopause and MS**
Dina Jacobs, MD
- 1:10 PM – 2:00 PM **Women's NMO and MOG Issues**
Rachel Brandstadter, MD and Kristina Patterson, MD, PhD
- 2:00 PM – 2:15 PM **Break**



ON THE BASIS OF SEX:

WOMEN'S ISSUES IN NEUROLOGY AND MULTIPLE SCLEROSIS

AGENDA FRIDAY, MAY 8, 2020

(continued)

- 2:15 PM – 2:45 PM **Symptomatic Management for Women Living with MS**
Meghan Garabedian, MSN, CRNP, MSCN
- 2:45 PM – 3:15 PM **Bladder and Bowel Issues and MS**
Ariana Smith, MD
- 3:15 PM – 3:45 PM **Adolescent Issues and Transition of MS Care**
Sona Narula, MD
- 3:45 PM – 4:15 PM **Panel Discussion**
Rachel Brandstadter, MD, Ryan Fuller, PharmD,
Meghan Garabedian, MSN, CRNP, MSCN, Dina Jacobs, MD,
Sona Narula, MD, Kristina Patterson, MD, PhD,
Caitlin Pileggi, MSN, CRNP, MSCN, Ariana Smith, MD
- 4:15 PM – 4:30 PM **Adjournment**

**Attendees will have the opportunity to submit in advance, questions or cases to the panel for both the morning and afternoon panel discussions.*

Registration Form

ON THE BASIS OF SEX:

WOMEN'S ISSUES IN NEUROLOGY AND MULTIPLE SCLEROSIS

Friday, May 8, 2020

This conference is available by Live Stream Only. See registration section for full details.

You may register by credit card or check online at:

<https://upenn.cloud-cme.com/womensissues2020>

Questions? Contact us at:

Phone: 215-898-6400 or 215-898-8005 • penncme@penmedicine.upenn.edu

We are unable to accept faxed or mailed registration forms with credit card payment.

Please print or type

Name (First) _____ (Last) _____

Academic Degree _____

Medical Specialty _____

Affiliation (Hospital, Office, or Company) _____

Address (Affiliation or Home) _____

City _____ State _____ Zip _____

Phone _____ Fax _____

E-mail _____

REGISTRATION FEE

(pre-payment is required to be officially registered)

- Physicians and industry employees – \$95
- Nurse practitioners, physician assistants and other healthcare professionals – \$75
- Residents, Fellows and students – \$25

Penn Medicine Rates

- Penn Medicine and affiliates, faculty and staff – \$55

PAYMENT METHOD

- If you are paying by credit card or check, register online at
<https://upenn.cloud-cme.com/womensissues2020>
- If you are paying by check, you may mail your completed registration form and check made payable to **The Trustees of the University of Pennsylvania/CME** to:
Conference Manager
Office of Continuing Medical & Interprofessional Education
3400 Civic Center Blvd, Smilow/SPE, Bldg 421, 6th Floor, JMEC/CME
Philadelphia, PA 19104