



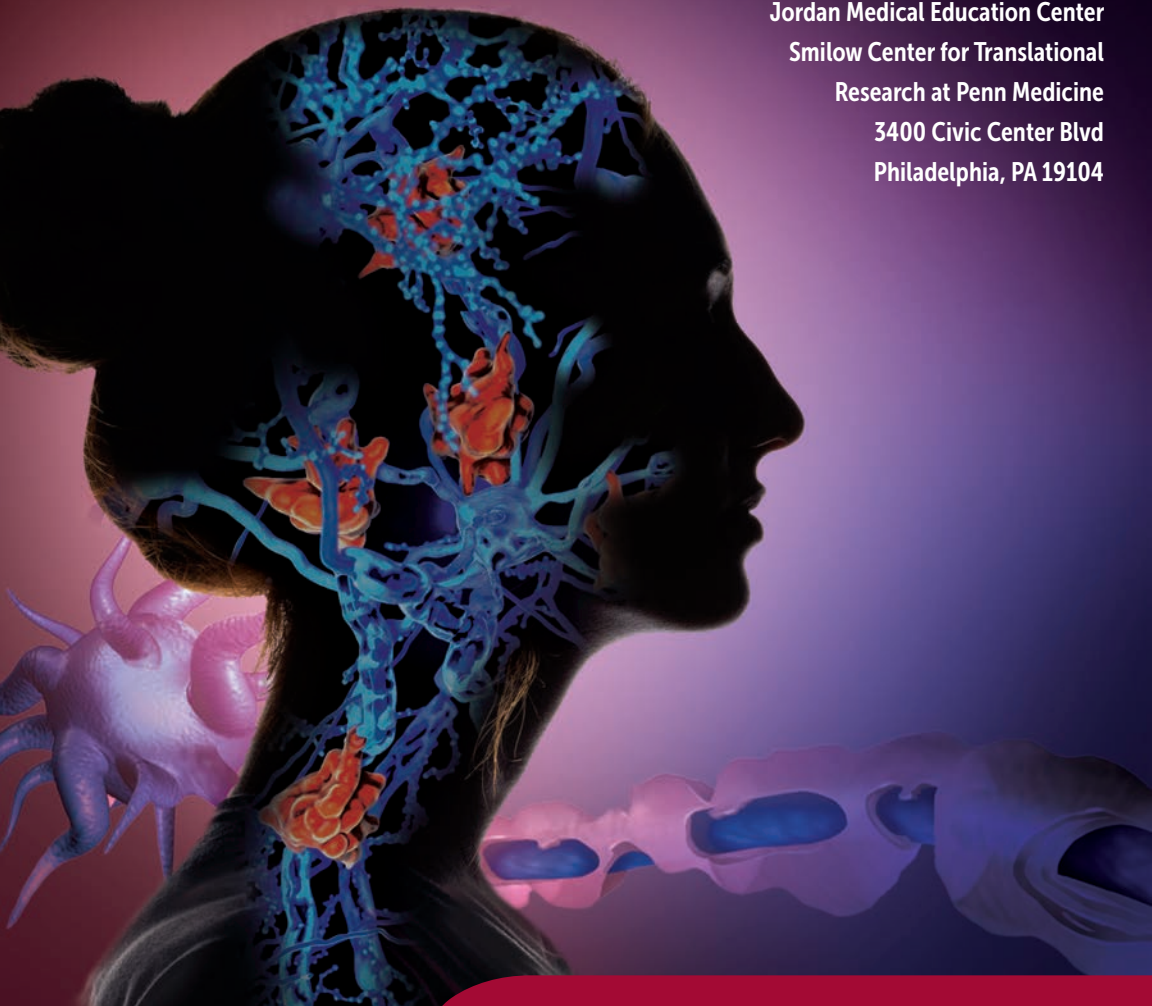
Penn Medicine
Continuing Medical and
Interprofessional Education

ON THE BASIS OF SEX: WOMEN'S ISSUES IN MULTIPLE SCLEROSIS

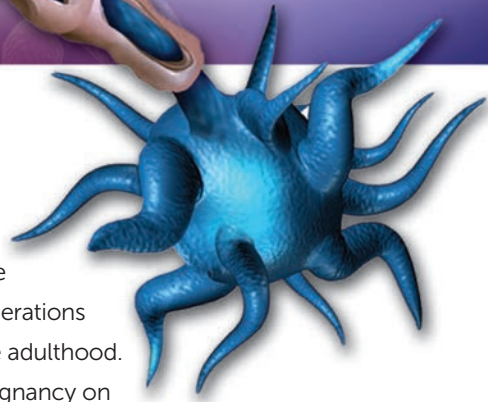
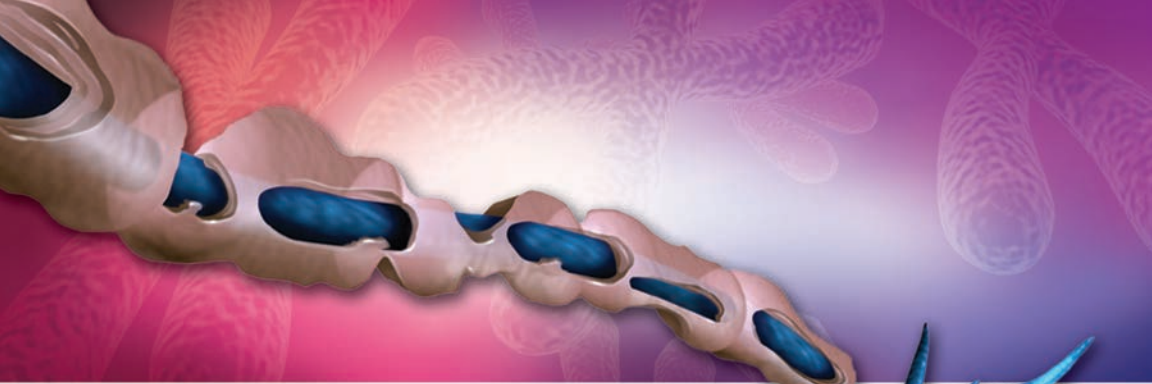
CME/CNE-ACCREDITED CONFERENCE

TUESDAY, JUNE 25, 2019

Law Auditorium at the
Jordan Medical Education Center
Smilow Center for Translational
Research at Penn Medicine
3400 Civic Center Blvd
Philadelphia, PA 19104



<https://upenn.cloud-cme.com/womensissues2019>



PROGRAM OVERVIEW & TARGET AUDIENCE

Women living with multiple sclerosis have many unique issues that arise during their life-span. There are considerations that must be addressed from adolescence through late adulthood.

These issues include family planning, the impact of pregnancy on MS, use of MS treatments during pregnancy and breastfeeding, the impact of menopause on MS, and the management of bladder and sexual dysfunction.

The course is being taught by experts in the field of women's health issues in multiple sclerosis who are renowned nationally and internationally.

This activity is designed for neurologists specializing in multiple sclerosis, nurse practitioners, physician assistants, residents, fellows, students and other physicians and healthcare professionals with an interest in multiple sclerosis and women's health.

LEARNING OBJECTIVES

Upon conclusion of this educational activity, the participant should be able to:

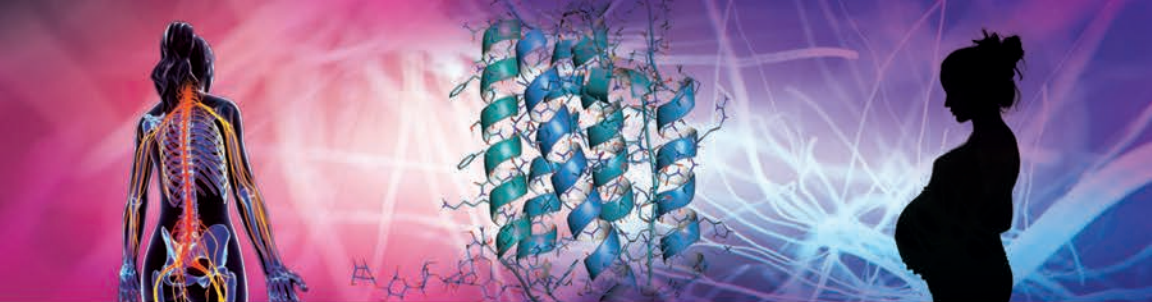
- Review the skills required to manage issues that arise around pregnancy and multiple sclerosis
- Discuss the safety of MS medications during pregnancy and breastfeeding
- Discuss how to counsel women regarding family planning and MS
- Identify the skills that are necessary to manage bladder symptoms and sexual dysfunction and MS
- Review how to address and manage MS issues during adolescence

HOSTING DEPARTMENT

On the Basis of Sex: Women's Issues in Multiple Sclerosis is hosted by the Center for NeuroInflammation and Experimental Therapeutics and the Department of Neurology at Penn Medicine.

ACKNOWLEDGEMENT

This program was made possible by generous support through the **Board of Women Visitors** of the Hospital of the University of Pennsylvania.



ACCREDITATION



JOINTLY ACCREDITED PROVIDER™
INTERPROFESSIONAL CONTINUING EDUCATION

In support of improving patient care, Penn Medicine is jointly accredited by the Accreditation Council for Continuing Medical Education (ACCME), the Accreditation Council for Pharmacy Education (ACPE), and the American Nurses Credentialing Center (ANCC), to provide continuing education for the healthcare team.

DESIGNATION OF CREDIT

Physicians: Penn Medicine designates this live activity for a maximum of 4.25 *AMA PRA Category 1 Credits™*. Physicians should claim only the credit commensurate with the extent of their participation in the activity.

Nurses: This activity awards 4.25 contact hours.

Physician Assistants: AAPA accepts certificates of participation for educational activities certified for *AMA PRA Category 1 Credit™* from organizations accredited by ACCME or a recognized state medical society. PAs may receive a maximum of 4.25 Category 1 credits for completing this activity.

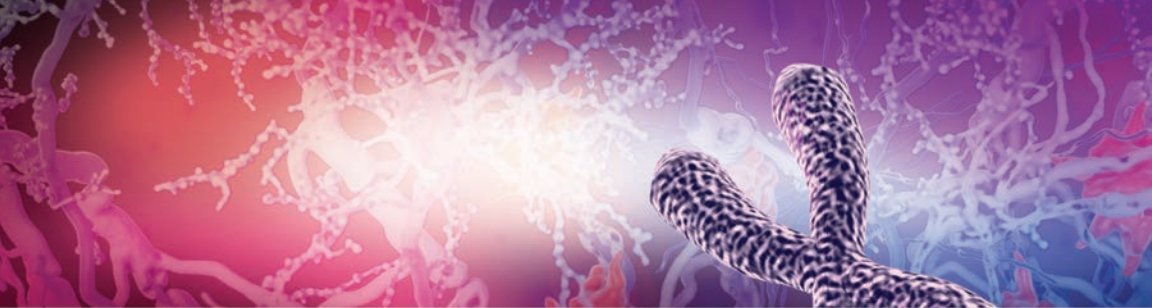
Certificates and Transcripts: After the conference has concluded, all participants will receive a follow-up email with instructions and a link with instructions on how to claim their credit. Once participants submit the request for credit, the earned credits will be available for viewing on a transcript or available for printing at <https://upenn.cloud-cme.com>. Please note that the individual certificate will not be mailed.

REGISTRATION FEES

The registration fees for *On the Basis of Sex: Women's Issues in Multiple Sclerosis* are \$95 for physicians and industry employees, \$75 for nurse practitioners, physician assistants & other healthcare professionals, and \$25 for residents, fellows & students. The registration fee for Penn Medicine and affiliates, faculty and staff is \$55.

The registration fee includes attendance to the conference, a course booklet and a link to view the presentations (slides) online, credit certificate, lunch, afternoon break & reception.

If you are registering with a credit card, please register online at <https://upenn.cloud-cme.com/womensissues2019>. You must sign-in with your PennKey or your email and password. If you do not already have a profile, you must create one before you can register for an event. We cannot accept faxed or mailed registration forms with credit card information. To pay by check, complete the registration form and mail it in with your check. Please see the registration form for mailing information. **Please note:** mailed registrations can take up to 5-10 business days before they are received. All registrations will be confirmed by email. Please be sure to check your junk box!



DISCLOSURES

Penn Medicine, Office of Continuing Medical and Interprofessional Education, adheres to the *ACCME Standards for Commercial Support*. Faculty and planners disclosure information will be made available in the conference materials and syllabus. Faculty members are also expected to disclose to participants any discussions of off-label and/or investigational uses of pharmaceutical products within their presentations.

MEETING LOCATION

On the Basis of Sex: Women's Issues in Multiple Sclerosis will be held Tuesday, June 25, 2019 in the Law Auditorium at the Jordan Medical Education Center (located on the 5th floor of the Smilow Center for Translational Research and Perelman Center for Advanced Medicine), 3400 Civic Center Boulevard, Philadelphia, Pennsylvania, 19104.

Directions & Parking: The Law Auditorium at the Jordan Medical Education Center is located on the 5th Floor of the Smilow Translational Research Center. Smilow TRC is connected to the Perelman Center for Advanced Medicine and is located at 3400 Civic Center Blvd, Philadelphia, PA. We strongly recommend you use GPS or use an online driving directions site (such as mapquest.com, drivingdirections.com or googlemaps.com) for exact directions to and from your starting point or if you prefer, to take public transportation to and from campus, please visit <http://www.upenn.edu/services/transportation> for options.

Parking Options: On Tuesday, June 25 the 3600 Civic Center Blvd Parking Garage is open for public parking. This garage is accessible from Civic Center Blvd and is located at Civic Center Blvd and West Service Drive (next to the Colket Research Center). Smilow TRC is about a 5 minute walk from this parking garage. Parking is \$20 per day and is the responsibility of the participant. Parking fee will not be reimbursed by the conference.

SERVICES FOR THE DISABLED If special arrangements are required for an individual with a disability to attend this meeting, please contact the Office of Continuing Medical and Interprofessional Education no later than June 11, 2019, at 215-898-6400.

NONDISCRIMINATION STATEMENT The University of Pennsylvania values diversity and seeks talented students, faculty, and staff from diverse backgrounds. The University of Pennsylvania does not discriminate on the basis of race, sex, sexual orientation, gender identity, religion, color, national or ethnic origin, age, disability, or status as a Vietnam Era Veteran or disabled veteran in the administration of educational policies, programs or activities; admissions policies; scholarship and loan awards; athletic, or other University administered programs or employment. Questions or complaints regarding this policy should be directed to Executive Director, Office of Affirmative Action and Equal Opportunity Programs, 3600 Chestnut Street, Sansom Place East Suite 228, Philadelphia, PA 19104-6106 or 215-898-6993 (Voice) or 215-898-7803 (TDD). www.upenn.edu/affirm-action.



FACULTY

CONFERENCE DIRECTOR

Dina Jacobs, MD

Associate Professor of Neurology
Associate Director Multiple Sclerosis Center
Perelman School of Medicine
University of Pennsylvania Health System
Philadelphia, PA

CONFERENCE CO-DIRECTORS

Sona Narula, MD

Assistant Professor of Clinical Neurology
Perelman School of Medicine
University of Pennsylvania Health System
Philadelphia, PA

Vanessa L. Zimmerman, MSN, RN, MSCN

Clinical MS Nurse
University of Pennsylvania Health System
Philadelphia, PA

SPEAKERS

Amit Bar-Or, MD, FRCPC

Melissa and Paul Anderson
Distinguished Professor
Director, Center for Neuroinflammation
and Experimental Therapeutics
and Chief, Multiple Sclerosis Division
Department of Neurology
Perelman Center for Advanced Medicine
University of Pennsylvania
Philadelphia, PA

Riley Bove, MD

Assistant Professor of Neurology
University of California at San Francisco
San Francisco, CA

Meghan Garabedian, MSN, CRNP, MSCN

Nurse Practitioner
University of Pennsylvania Health System
Philadelphia, PA

Kerstin Hellwig, MD

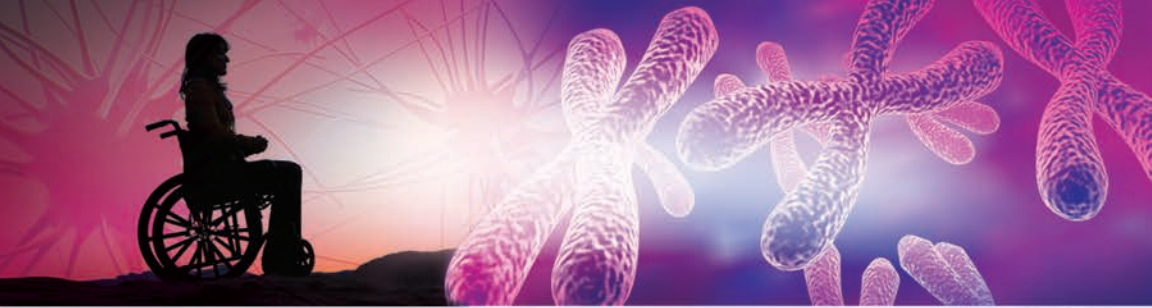
Founder and Chair of the Nationwide
German MS and Pregnancy Registry
(DMSKW)
St. Josef Hospital
Ruhr University
Bochum, Germany

Maria Houtchens, MD

Associate Professor of Neurology
Harvard Medical School
Associate Neurologist
Brigham and Women's Hospital
Director, Women's Health Program
Staff Neurologist, Partners MS Center
Boston, MA

Tamara B. Kaplan MD

Associate Neurologist, Partners MS Center
Brigham and Women's Hospital
Instructor, Harvard Medical School
Boston, MA



ON THE BASIS OF SEX:

WOMEN'S ISSUES IN MULTIPLE SCLEROSIS

AGENDA

TUESDAY, JUNE 25, 2019

11:30 AM – 12:30 PM **Registration and Lunch**

12:30 PM – 12:35 PM **Welcome**

Amit Bar-Or, MD, FRCPC, Dina Jacobs, MD

12:35 PM – 1:20 PM **Pregnancy and MS**

Maria Houtchens, MD

1:20 PM – 2:05 PM **Family Planning and MS: An Update on Safety of Medications
During Pregnancy and Lactation**

Kerstin Hellwig, MD

2:05 PM – 2:50 PM **Menopause, Hormonal Issues, and MS**

Riley Bove, MD

2:50 PM – 3:05 PM **Break**

3:05 PM – 3:50 PM **Bladder Symptoms, Sexual Dysfunction, and MS**

Tamara Kaplan, MD

3:50 PM – 4:20 PM **Adolescent Issues in MS**

Sona Narula, MD

4:20 PM – 4:50 PM **Cases**

Moderator: Dina Jacobs, MD

Panel: Riley Bove, MD, Meghan Garabedian, MSN, CRNP, MSCN,
Kerstin Hellwig, MD, Maria Houtchens, MD, Tamara Kaplan, MD and
Sona Narula, MD

4:50 PM – 5:00 PM **Questions and Adjourn from CME/CNE portion**

5:00 PM **Reception**

5:30 PM – 7:30 PM **Patient Program**

On the Basis of Sex: Women's Issues in Multiple Sclerosis

This segment will address issues that are unique to women living with multiple sclerosis. Educational topics will include pregnancy and MS, hormonal changes including menopause and how it affects MS, as well as symptom management. We look forward to a lively program with lots of education, interaction and discussion! Light refreshments will be provided as well as entertainment by people living with MS.

Registration Form

ON THE BASIS OF SEX:

WOMEN'S ISSUES IN MULTIPLE SCLEROSIS

Tuesday, June 25, 2019

If you are registering using your credit card, please register online at:

<https://upenn.cloud-cme.com/womensissues2019>

Questions? Contact us at:

Phone: 215-898-6400 or 215-898-8005 • penncme@penncme.upenn.edu

Please note we are unable to accept faxed registration forms.

Please print or type

Name (First) _____ (Last) _____

Academic Degree _____

Medical Specialty _____

Affiliation (Hospital, Office, or Company) _____

Address (Affiliation or Home) _____

City _____ State _____ Zip _____

Phone _____ Fax _____

E-mail _____

REGISTRATION FEE

(pre-payment is required to be officially registered)

- Physicians and industry employees – \$95
- Nurse practitioners, physician assistants and other healthcare professionals – \$75
- Residents, Fellows and students – \$25

Penn Medicine Rates

- Penn Medicine and affiliates, faculty and staff – \$55

PAYMENT METHOD

- If you are paying by credit card, please register online at <https://upenn.cloud-cme.com/womensissues2019>
- If you are paying by check, you may mail your completed registration form and check made payable to **The Trustees of the University of Pennsylvania/CME** to:
Conference Coordinator
Penn Medicine, Office of Continuing Medical and Interprofessional Education
150 Anatomy/Chemistry Building
3620 Hamilton Walk, Philadelphia, PA 19104-6061
- Do not include any credit card information on the registration form or email any credit card information

Please Note: Walk-in registrants must bring payment to the program.
Seating may be limited for walk-in registrants.