



Penn Medicine
Continuing Medical and
Interprofessional Education

LIVE VIRTUAL

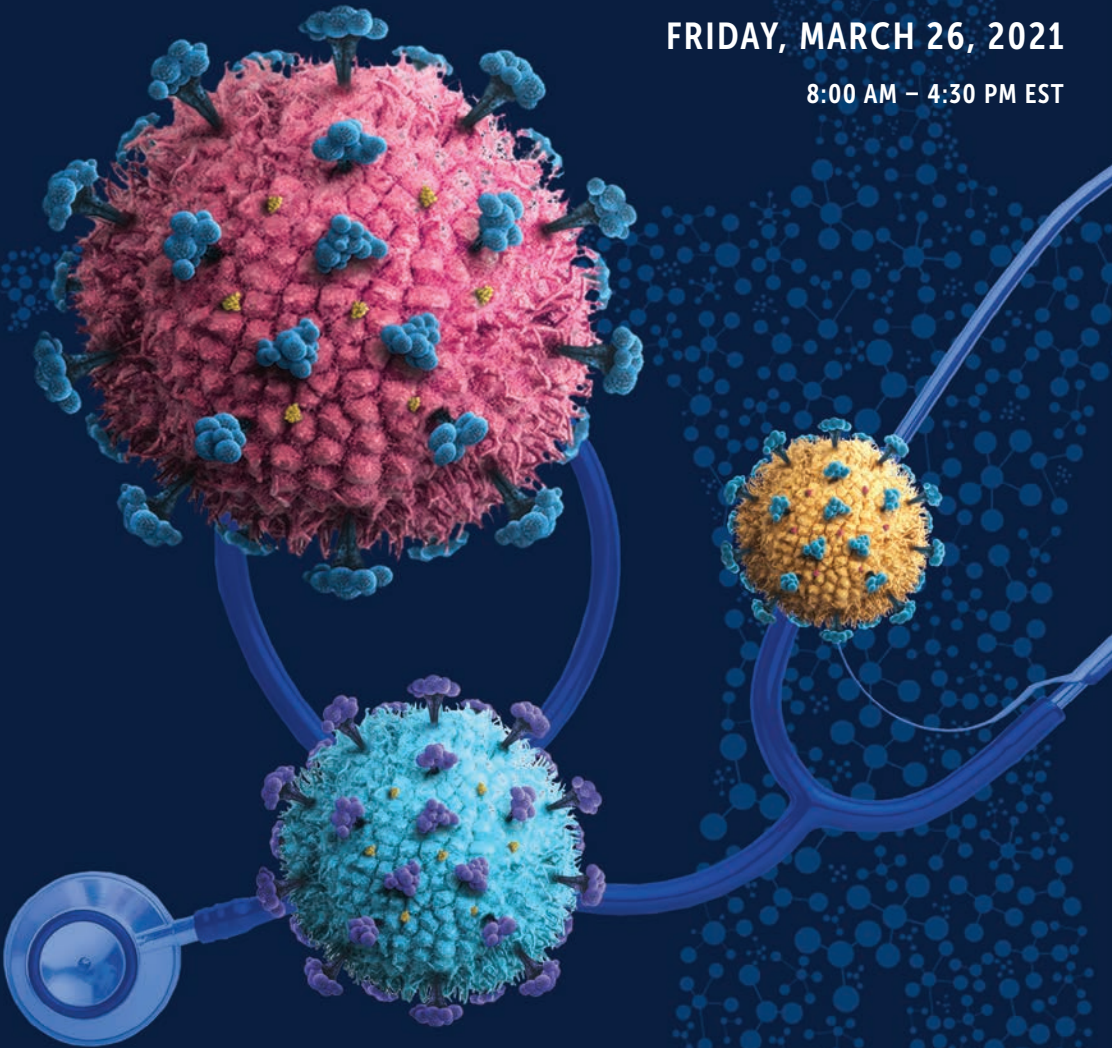
COVID-19 UPDATE FOR PRIMARY CARE PROVIDERS 2021

CME/CE-ACCREDITED CONFERENCE



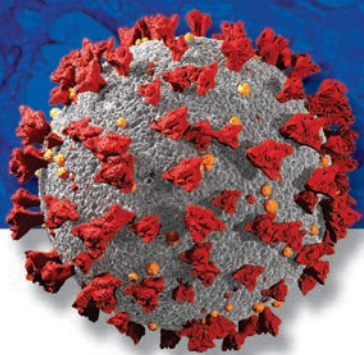
FRIDAY, MARCH 26, 2021

8:00 AM – 4:30 PM EST



<https://upenn.cloud-cme.com/COVIDUpdate2021>

PROGRAM OVERVIEW & TARGET AUDIENCE



The goal of this one-day conference is to share state-of-the-art information on COVID-19. The course, taught by experts in the field from the University of Pennsylvania, will include core topics such as the epidemiology of COVID-19, current and emerging treatment modalities, infection control measures, and prevention strategies. The conference aims to enable physicians and nurses to stay current with best practices, diagnoses, and treatments of COVID-19 diagnosed in the primary care and other practice settings. The conference will provide management advice and critical information relevant to clinical decision-making. The lectures, case discussions, and panels will provide helpful pearls as well as thorough reviews of the diagnosis and management of complex cases as instructive examples. The content is intended to augment the attendees' ability to practice medicine according to the most recent available guidelines and recent original literature and to broaden their knowledge of this rapidly changing field.

This conference is designed for primary care physicians, nurse practitioners, nurses, physician assistants, researchers, fellows, residents, pharmacists, and medical and nursing students.

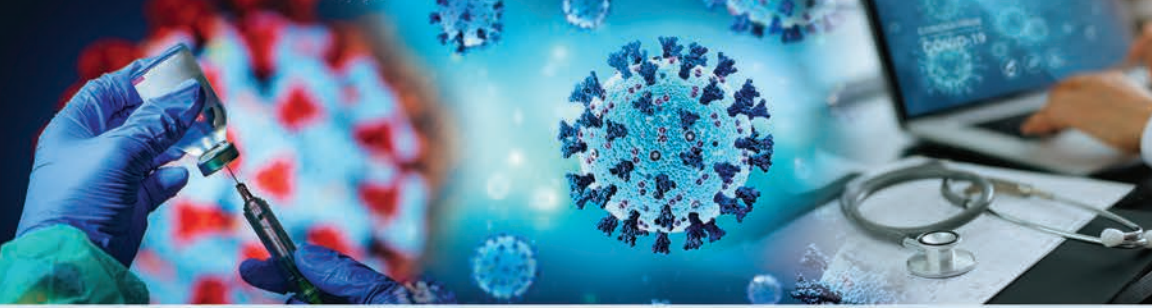
LEARNING OBJECTIVES

Upon conclusion of this educational activity, the participant will be better able to:

- Detail the overall epidemiology of COVID 19 with a focus on the United States and on racial disparities
- Identify individuals who are at risk for COVID-19 and among those, which patients are at risk for severe disease.
- Diagnose COVID-19 using the most appropriate diagnostic modalities in a variety of health care settings
- Identify common clinical manifestations of COVID-19.
- Apply evidence-based therapeutic approaches to the care of patients with COVID-19.
- Apply evidence-based strategies to prevent COVID-19 in the health care setting and in the community.
- Be able to describe key infection control measures in managing the COVID-19 pandemic in health care settings.

HOSTING DEPARTMENT

COVID-19 Update for Primary Care Providers is hosted by the Division of Infectious Diseases, Department of Medicine at the University of Pennsylvania.



ACCREDITATION



JOINTLY ACCREDITED PROVIDER®
INTERPROFESSIONAL CONTINUING EDUCATION

In support of improving patient care, Penn Medicine is jointly accredited by the Accreditation Council for Continuing Medical Education (ACCME), the Accreditation Council for Pharmacy Education (ACPE), and the American Nurses Credentialing Center (ANCC), to provide continuing education for the healthcare team.

DESIGNATION OF CREDIT

Physicians: Penn Medicine designates this live activity for a maximum of 7.0 *AMA PRA Category 1 Credits*™. Physicians should claim only the credit commensurate with the extent of their participation in the activity.



ABIM MOC: Successful completion of this CME activity, which includes participation in the evaluation component, enables the participant to earn up to 7.0 MOC points in the American Board of Internal Medicine's (ABIM)

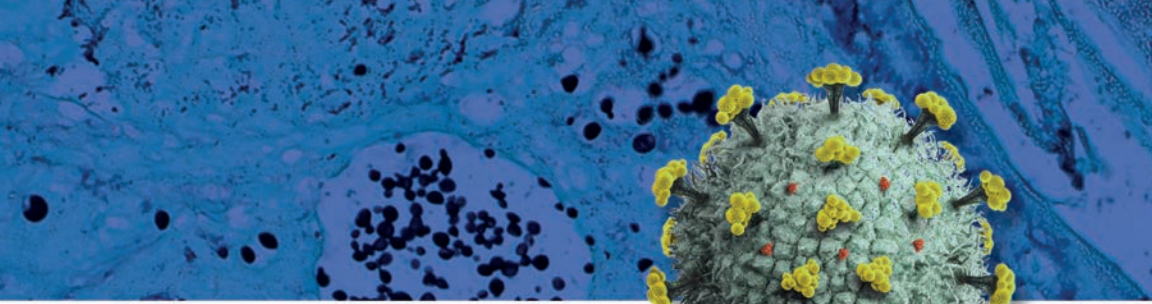
Maintenance of Certification (MOC) program. Participants will earn MOC points equivalent to the amount of CME credits claimed for the activity. It is the CME activity provider's responsibility to submit participant completion information to ACCME for the purpose of granting ABIM MOC credit.

Nurses: This program provides 7.0 contact hours.

Pharmacists: This knowledge-based activity is approved for 7.0 ACPE contact hours of continuing pharmacy education credit. JA0000324-0000-21-014-L04-P.

Physician Assistants: AAPA accepts certificates of participation for educational activities certified for *AMA PRA Category 1 Credit*™ from organizations accredited by ACCME or a recognized state medical society. PAs may receive a maximum of 7.0 Category 1 credits for completing this activity.

Certificates and Transcripts: After the conference has concluded, all participants will receive a follow-up email with instructions and a link with instructions on how to claim their credit. Once participants submit the request for credit, the earned credits will be available for viewing on your transcript or available for printing at <https://upenn.cloud-cme.com>. Please note that the individual certificate will not be mailed.



REGISTRATION FEES

The registration fees for *Covid-19 Update for Primary Care Providers* are \$195 for physicians and industry employees, \$95 for nurse practitioners, nurses, pharmacists, physician assistants, researchers and other healthcare professionals, \$25 for residents and fellows and students.

Penn Medicine and Affiliates working in the Department of Medicine may register for a discounted rate of \$25. To register at this reduced rate, you must have a valid Penn Medicine ID, sign in with your Pennkey and password at <https://upenn.cloud-cme.com> and register for this activity online.

The registration fee includes live stream access to the conference and access to view the presentations (slides) online. In-person attendance is not permitted for this conference.

All pre-registered attendees will receive a link and instructions to sign-in and join the virtual conference no later than Wednesday, March 24, 2021. BE SURE TO CHECK YOUR SPAM BOX FOR EMAILS REGARDING THIS CONFERENCE.

If you are registering with a credit card or check, please register online at <https://upenn.cloud-cme.com/CovidUdpate2021>. We cannot accept faxed or mailed registration forms with credit card information. To pay by check, complete your registration online and mail a copy of your confirmation email with your check. See the registration form for mailing information.

Please note: mailed registrations can take up to 5-10 business days before they are received. We are experiencing longer delays receiving mail due to the COVID-19 pandemic. We encourage all attendees to register online with a credit card. All registrations will be confirmed by email as long as your registration is received no later than March 24, 2021.

DISCLOSURES

Penn Medicine, Office of Continuing Medical and Interprofessional Education, adheres to the *ACCME Standards for Commercial Support*. Faculty disclosure information will be made available in the conference materials and syllabus. Faculty members are also expected to disclose to participants any discussions of off-label and/or investigational uses of pharmaceutical products within their presentations.

CANCELLATION POLICY

In order to process refunds for course withdrawals, cancellations must be received in writing by March 12, 2021 and are subject to a \$15.00 service charge. No refunds will be issued thereafter.

In the event of cancellation or postponement, the University will refund registration fees.

NONDISCRIMINATION STATEMENT The University of Pennsylvania values diversity and seeks talented students, faculty, and staff from diverse backgrounds. The University of Pennsylvania does not discriminate on the basis of race, sex, sexual orientation, gender identity, religion, color, national or ethnic origin, age, disability, or status as a Vietnam Era Veteran or disabled veteran in the administration of educational policies, programs or activities; admissions policies; scholarship and loan awards; athletic, or other University administered programs or employment. Questions or complaints regarding this policy should be directed to Executive Director, Office of Affirmative Action and Equal Opportunity Programs, 3600 Chestnut Street, Sansom Place East Suite 228, Philadelphia, PA 19104-6106 or 215-898-6993 (Voice) or 215-898-7803 (TDD). www.upenn.edu/affirm-action.

FACULTY



With the exception of the guest faculty, the Course Directors & Faculty hold academic and/or clinical appointments from the Perelman School of Medicine at the University of Pennsylvania and Penn Medicine, Philadelphia, PA

CONFERENCE DIRECTORS

Michael Z. David, MD, PhD
Assistant Professor of Medicine
Assistant Professor of Epidemiology

William R. Short MD, MPH
Associate Professor of Clinical Medicine
Associate Professor of Clinical Medicine
in Obstetrics and Gynecology

SPEAKERS

Valerianna K. Amorosa, MD
Professor of Clinical Medicine

Katharine J. Bar, MD
Assistant Professor of Medicine

Jillian T. Baron, MD
Instructor in Medicine

Katie Chiotos, MD
Assistant Professor of Anesthesia,
Critical Care, and Pediatrics

Kathleen Degnan, MD
Assistant Professor of Clinical Medicine

Ian Frank, MD
Professor of Medicine
Associate Chief, Division of
Infectious Diseases

Laurel J. Glaser, MD, PhD
Assistant Professor, Clinical Pathology
and Laboratory Medicine
Director, Clinical Microbiology Laboratory
Co-Director, HUP/CHOP Fellowship in
Clinical Microbiology
Medical Director, Quality

Stephen J. Gluckman, MD
Professor of Medicine
Director, Penn Travel Medicine

Keith W. Hamilton, MD
Associate Professor of Clinical Medicine
Director of Antimicrobial Stewardship
Hospital of the University of Pennsylvania

Helen C. Koenig, MD, MPH
Associate Professor of Clinical Medicine
Medical Director, MacGregor Infectious
Diseases Practice, Perelman Center for
Advanced Medicine

Joseph M. Kontra, MD
Chief, Infectious Diseases
Medical Director, Infection Prevention,
Microbiology and Antimicrobial Stewardship
Chair, Sepsis Task Force
Penn Medicine Lancaster General Hospital

Ebbing Lautenbach, MD, MPH, MSCE
Robert Austrian Professor of Medicine
Professor of Epidemiology in
Biostatistics and Epidemiology
Chief, Division of Infectious Diseases

Peter Liu, MD
Assistant Professor of Clinical Medicine

Florence M. Momplaisir, MD, MSHP, FACP
Assistant Professor of Medicine

Kathleen M. Murphy, MD
Assistant Professor of Clinical Medicine
Associate Hospital Epidemiologist

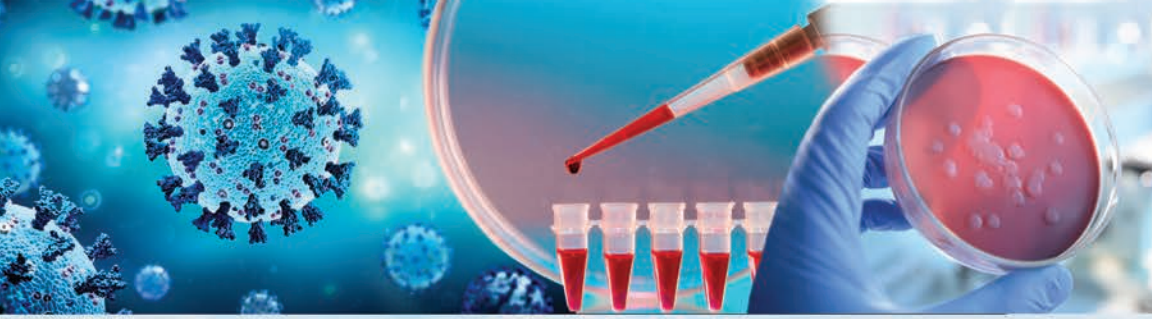
Judith O'Donnell, MD
Professor of Clinical Medicine
Section Chief for Infectious Diseases
Penn Presbyterian Medical Center

Naasha J. Talati, MD, MSCR
Assistant Professor of Clinical Medicine
Director of Antimicrobial Stewardship, Penn
Presbyterian Medical Center

Pablo Tebas, MD
Professor of Medicine

Leah Turner, CRNP
Clinical Nurse Practitioner
MacGregor Infectious Diseases Clinic
Hospital of the University of Pennsylvania

*Nurse Planner



COVID-19 UPDATE FOR PRIMARY CARE PROVIDERS 2021

AGENDA | FRIDAY, MARCH 26, 2021

- 8:00 AM – 8:15 AM **Welcome and Introductions**
*Ebbing Lautenbach MD, MPH, MSCE; William R. Short MD, MPH
Michael Z. David, MD, MS, PhD*
- 8:15 AM – 8:45 AM **Epidemiology of COVID-19 in the US and Globally**
Michael Z. David, MD, PhD
- 8:45 AM – 9:15 AM **Disparities in COVID-19: Incidence, Treatment, & Prevention**
Florence M. Momplaisir, MD, MSHP, FACP
- 9:15 AM – 10:00 AM **Diagnostic Testing for COVID-19**
- Review of Testing Platforms – *Laurel J. Glaser, MD, PhD*
 - Application of Tests to Evaluating Community or Household Transmission – *Kathleen M. Murphy, MD*
- 10:00 AM – 10:15 AM Break
- 10:15 AM – 10:45 AM **Acute Clinical Manifestations of COVID-19**
Stephen J. Gluckman, MD
- 10:45 AM – 11:15 AM **Longer Term Sequelae of COVID-19**
Valerianna K. Amorosa, MD
- 11:15 AM – 12:00 PM **Infection Control and Transmission Panel**
- Infection Control in Hospital: Pearls of Wisdom – *Judith A. O'Donnell, MD*
 - COVID Transmission/Surveillance Outside of Hospitals – *Naasha J. Talati, MD, MSCR*
- 12:00 PM – 12:45 PM Break/Lunch
- 12:45 PM – 1:45 PM **Treatment Update on COVID-19 (15 minutes each)**
- Antivirals – *Dr. Kathleen O. Degnan, MD*
 - Immunosuppressives – *Keith W. Hamilton, MD*
 - Antibody Therapies – *Pablo M. Tebas, MD*
 - Convalescent Plasma – *Katharine J. Bar, MD*
- 1:45 PM – 2:15 PM **COVID in Special Populations (panel) 15 minutes each**
- COVID-19 and HIV – *Jillian T. Baron, MD*
 - COVID-19 in Children – *Katie Chiotos, MD*
- 2:15 PM – 2:45 PM **Update on SARS-CoV-2 Vaccines**
Ian Frank, MD
- 2:45 PM – 3:00 PM **The Origins and Significance of COVID-SARS-CoV-2 Variants**
Joseph M. Kontra, MD
- 3:00 PM – 3:15 PM Break
- 3:15 PM – 4:15 PM **“Bringing it All Together” Case-Based Discussion Panel**
*Stephen J. Gluckman, MD; Helen C. Koenig, MD, MPH; Peter Liu, MD;
Kathleen M. Murphy, MD; Judith O’Donnell, MD; Leah Turner, CRNP*
- 4:15 PM – 4:30 PM **Wrap up**
Michael Z. David, MD, PhD; William R. Short, MD, MPH

Registration Form

LIVE VIRTUAL

COVID-19 UPDATE FOR PRIMARY CARE PROVIDERS 2021

FRIDAY, MARCH 26, 2021

8:00 AM – 4:30 PM EST

We strongly encourage you to register for this conference online by check or credit card at
<https://upenn.cloud-cme.com/COVIDUpdate2021>

Questions? Contact us at:

penncme@penmedicine.upenn.edu • Phone: 215-898-6400 or 215-898-8005

Please note we are unable to accept faxed registration forms.

Please print or type

Name (First) _____ (Last) _____

Academic Degree _____

Medical Specialty _____

Affiliation (Hospital, Office, or Company) _____

Address (Affiliation or Home) _____

City _____ State _____ Zip _____

Phone _____ Fax _____

E-mail _____

REGISTRATION FEE

(pre-payment is required to be officially registered)

- Physicians and industry employees – \$195
- Nurse practitioners, nurses, pharmacists, physician assistants, researchers and other healthcare professionals – \$95
- Residents, fellows and students – \$25
- Penn Medicine faculty, staff and employees – \$25

PAYMENT METHOD

- If you are paying by check or credit card, please register online at
<https://upenn.cloud-cme.com/COVIDUpdate2021>
- If you are paying by check, you may mail your completed registration form and check made payable to **The Trustees of the University of Pennsylvania/CME** to:
Conference Manager, Office of Continuing Medical & Interprofessional Education
Perelman School of Medicine/CME
JMEC, SPE, 6th Floor, University of Pennsylvania
3400 Civic Center Blvd, Building 421, Philadelphia, PA 19104-5162
- Do not include any credit card information on the registration form or share via email.