

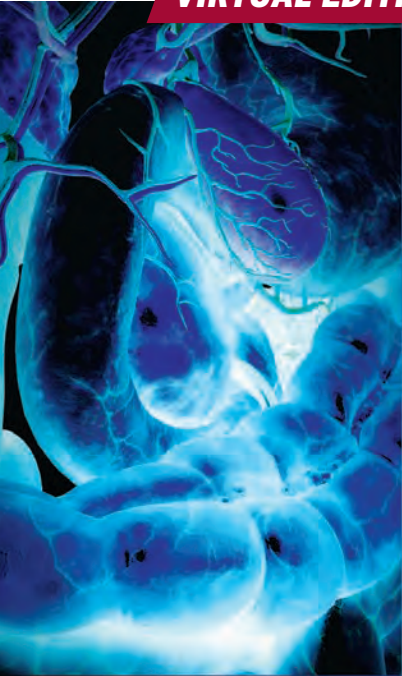
The Division of Gastroenterology/Department of Medicine  
and the IBD Center at the Perelman School of Medicine

*Present*

# 12TH UNIVERSITY OF PENNSYLVANIA INFLAMMATORY BOWEL DISEASE SYMPOSIUM

## Update and Future Directions

**VIRTUAL EDITION**



A CME/CNE-ACCREDITED SYMPOSIUM

**Saturday, March 13, 2021**

This conference will be  
**LIVE STREAMED**

<https://upenn.cloud-cme.com/IBD2021>  
[www.med.upenn.edu/gastro](http://www.med.upenn.edu/gastro)

In Conjunction with



Endorsed by



AGA INSTITUTE





## PROGRAM OVERVIEW & TARGET AUDIENCE

The 12th University of Pennsylvania Inflammatory Bowel Disease Symposium will highlight the advances in the treatment of IBD. The program will include lectures by nationally and internationally recognized experts which will be followed by interactive case presentations and panel discussions. A wide array of topics will be discussed including pharmacologic therapies and surgical interventions and optimal use of imaging and endoscopy. Participants will receive a comprehensive overview of the latest available research and clinical information on evaluation and management of patients with IBD.

This activity has been designed for gastroenterologists, gastrointestinal surgeons, gastroenterology fellows, internists, residents, physician assistants, nurse practitioners, clinical nurse specialists, dietitians, nutritionists and other health care professionals.

### Learning Objectives

At the conclusion of this activity, participants should be able to:

- Appropriately prescribe biologics and other targeted therapies for IBD
- Utilize biomarkers and therapeutic drug monitoring to improve outcomes
- Implement treat to target strategies in the management of IBD
- Successfully manage complications of IBD such as perianal fistula, stricture, and abscess

### Hosting Department

The 12th Penn Inflammatory Bowel Disease Symposium is hosted by the Division of Gastroenterology, Department of Medicine and the IBD Center at the University of Pennsylvania.

### Accreditation



JOINTLY ACCREDITED PROVIDER™  
INTERPROFESSIONAL CONTINUING EDUCATION

In support of improving patient care, Penn Medicine is jointly accredited by the Accreditation Council for Continuing Medical Education (ACCME), the Accreditation Council for Pharmacy Education (ACPE), and the American Nurses Credentialing Center (ANCC), to provide continuing education for the healthcare team.

### Designation of Credit

**Physicians:** Penn Medicine designates this live activity for a maximum of 7.75 AMA PRA Category 1 Credits™. Physicians should claim only the credit commensurate with the extent of their participation in the activity.



**ABIM MOC:** Successful completion of this CME activity, which includes participation in the evaluation component, enables the participant to earn up to 7.75 MOC points in the American Board of Internal Medicine's (ABIM) Maintenance of Certification (MOC) program. Participants will earn MOC points equivalent to the amount of CME credits claimed for the activity. It is the CME activity provider's responsibility to submit participant completion information to ACCME for the purpose of granting ABIM MOC credit.

**Nurses:** This program provides 7.75 contact hours.

**Physician Assistants:** AAPA accepts certificates of participation for educational activities certified for AMA PRA Category 1 Credit™ from organizations accredited by ACCME or a recognized state medical society. PAs may receive a maximum of 7.75 Category 1 credits for completing this activity.

**Patient Safety Hours:** Some presentations at this conference will be designated for Patient Safety hours. The details will be noted in the virtual handout.

**Certificates and Transcripts:** After the conference has concluded, all participants will receive a follow-up email with instructions and a link. Once participants submit the request for credit, the earned credits will be available for viewing on your transcript or available for printing at <https://upenn.cloud-cme.com>. Please note that the individual certificate will not be mailed.

### Meeting Location

The 12th University of Pennsylvania Inflammatory Bowel Disease Symposium will be held Saturday, March 13, 2021 by live stream only. The virtual presentation will follow the scheduled agenda in real time.

### Registration Fees

The registration fees for The 12th University of Pennsylvania Inflammatory Bowel Disease Symposium are the following: \$100 for physicians or industry representatives and free for nurse practitioners, physician assistants, other healthcare professionals, residents and fellows.

**Penn Medicine and Affiliate Physicians** working in the Department of Medicine may register for a discounted rate of \$25. To register at this reduced rate, you must have a valid Penn Medicine ID, sign in with your Pennkey and password at <https://upenn.cloud-cme.com> and register for this activity online.

The registration fee includes live stream access to the symposium and access to view the presentations (slides) online. In-person attendance is not permitted for this conference. All pre-registered attendees will receive a link and instructions to sign-in and join the virtual conference.

If you are registering with a credit card or check, please register online at <https://upenn.cloud-cme.com/IBD2021>.

We cannot accept faxed or mailed registration forms with credit card information. To pay by check, complete your registration online and mail a copy of your confirmation email with your check. See the registration form for mailing information.

**Please note:** mailed registrations can take up to 5-10 business days before they are received. We are experiencing longer delays receiving mail due to the COVID-19 pandemic. We encourage all attendees to register online with a credit card.

All registrations will be confirmed by email as long as your registration is received no later than **March 11, 2021**.

### Cancellation and Refund Policy

**Refund Policy:** In order to process refunds for course withdrawals, cancellations must be received in writing by March 3, 2021 (subject to a service charge of \$15.00). No refunds will be issued thereafter.

**Cancellation Policy:** The University reserves the right to cancel or postpone any course due to unforeseen circumstances. In the event of cancellation or postponement, the University will refund registration fees.

### Disclosures

Penn Medicine, Office of Continuing Medical and Interprofessional Education, adheres to the ACCME *Standards for Commercial Support*. Faculty and planning committee members' disclosure information will be made available in the conference materials and syllabi. Faculty members are also expected to disclose to participants any discussions of off-label and/or investigational uses of pharmaceutical products within their presentations.

Saturday, March 13, 2021

## AGENDA

7:45 AM – 8:00 AM  
Sign into Virtual Platform

8:00 AM – 8:10 AM  
Welcome  
Gary Lichtenstein, MD

**MEDICAL THERAPIES**

Moderator: Gary Lichtenstein, MD

8:10 AM – 8:30 AM  
Mesalamine and Steroids:  
Role of the Old Standbys in 2021  
Meenakshi Bewtra, MD, PhD, MPH

8:30 AM – 8:50 AM  
Tofacitinib, Thiopurines,  
and Methotrexate:  
How and When to Use  
Brian G. Feagan, MD

8:50 AM – 9:20 AM  
Choosing Among Biologics  
Faten N. Aberra, MD, MSCE

9:20 AM – 9:40 AM  
Does Diet Matter  
James D. Lewis, MD, MSCE

9:40 AM – 10:00 AM  
Fecal Microbiota Transplantation  
for C Difficile and as Primary Therapy  
for IBD  
Neilanjan Nandi, MD

10:00 AM – 10:10 AM  
Case on Health Maintenance Issues  
Moderator: Lauren Wilson, MSN, CRNP

10:10 AM – 10:30 AM  
Panel Discussion /  
Question and Answer Session  
Moderator: Gary Lichtenstein, MD  
Panel: Faten N. Aberra, MD, MSCE,  
Meenakshi Bewtra, MD, PhD, MPH,  
Brian G. Feagan, MD, James D. Lewis,  
MD, MSCE, Neilanjan Nandi, MD and  
Lauren Wilson, MSN, CRNP

10:30 AM – 10:50 AM Break

**PROGNOSTICATION**

Moderator: James D. Lewis, MD, MSCE

10:50 AM – 11:10 AM  
Predictors of Cancer Risk and Implication  
for Cancer Surveillance Recommendations  
Anna Buchner, MD, PhD

11:10 AM – 11:30 AM  
What is the Target and  
How do we Get There  
Stephen B. Hanauer, MD

11:30 AM – 11:50 AM  
Therapeutic Drug Monitoring:  
In Whom, When and How?  
Gary Lichtenstein, MD

11:50 AM – 12:10 PM  
Case Discussion  
Moderator: Caroline Kerner, MD, MSCE  
Panel: Anna Buchner, MD, PhD and  
Akriti Saxena, MD

12:10 PM – 12:30 PM  
Panel Discussion /  
Question and Answer Session  
Moderator: James D. Lewis, MD, MSCE  
Panel: Anna Buchner, MD, PhD, Stephen B.  
Hanauer, MD, Gary Lichtenstein, MD and  
Akriti Saxena, MD

12:30 PM – 1:00 PM  
Lunch

**SEVERE AND COMPLICATED IBD –  
PART 1**

Moderator: Faten N. Aberra, MD, MSCE

1:00 PM – 1:20 PM  
Management of the Hospitalized Patient  
with IBD and Immune Checkpoint  
Inhibitor Colitis  
Farzana Rashid, MD

1:20 PM – 1:40 PM  
Crohn's Disease:  
Prevention of Postoperative Recurrence  
Robert B. Stein, MD

1:40 PM – 2:00 PM  
Fistula and Abscess in  
Crohn's Disease: Optimal  
Treatment Protocols  
Jesse A. Green, MD

2:00 PM – 2:20 PM  
Evaluation and Treatment of  
Pouch Inflammation and Other  
Pouch Complications  
Laura E. Raffals, MD

2:20 PM – 2:40 PM  
Case Discussion  
Moderator: Shivali Berera, MD  
Panel: Caroline Kerner, MD, MSCE and  
Helen Lee, MD

2:40 PM – 3:00 PM  
Panel Discussion /  
Question and Answer Session  
Moderator: Faten N. Aberra, MD, MSCE  
Panel: Jesse A. Green, MD, Laura E.  
Raffals, MD, Farzana Rashid, MD and  
Robert B. Stein, MD

3:00 PM – 3:20 PM Break

**SEVERE AND COMPLICATED IBD –  
PART 2**

Moderator: Gary Lichtenstein, MD

3:20 PM – 3:40 PM  
Preventing Complications of IBD  
Nabeel Khan, MD

3:40 PM – 4:00 PM  
Defining High Value Care for IBD  
David Rubin, MD

4:00 PM – 4:20 PM  
Novel Therapeutics Forthcoming for IBD  
William J. Sandborn, MD

4:20 PM – 4:40 PM  
Case Discussion  
Moderator: Jan-Michael A. Klapproth, MD  
Panel: Faten N. Aberra, MD, MSCE,  
Anna Buchner, MD, PhD and  
Gary Lichtenstein, MD

4:40 PM – 5:00 PM  
Question and Answer Session  
Moderator: Gary Lichtenstein, MD  
Panel: Nabeel Khan, MD, David Rubin,  
MD and William Sandborn, MD

5:00 PM  
Adjourn



The following Course Directors & Faculty are from the Perelman School of Medicine at the University of Pennsylvania, Philadelphia, PA

### Symposium Directors

**Faten N. Aberra, MD, MSCE**  
Associate Professor of Medicine  
Clinical Co-Director, Center for Inflammatory Bowel Disease  
Penn-CHOP Center for Digestive, Liver and Pancreatic Medicine

**James D. Lewis, MD, MSCE**  
Professor of Medicine  
and Epidemiology  
Associate Director, Center for Inflammatory Bowel Disease  
Interim Director of Gastroenterology at Penn Presbyterian Medical Center

**Gary R. Lichtenstein, MD**  
Professor of Medicine  
Director, Center for Inflammatory Bowel Disease

**Lauren Wilson, MSN, CRNP\***  
Nurse Practitioner

### Faculty

**Shivali Berera, MD**  
Assistant Professor of Clinical Medicine

**Meenakshi Bewtra, MD, PhD, MPH**  
Assistant Professor of Medicine  
and Epidemiology  
Senior Scholar, CCEB

**Anna Buchner, MD, PhD**  
Assistant Professor of Medicine

**Jesse A. Green, MD**  
Professor of Clinical Medicine

**Caroline Kerner, MD, MSCE**  
Clinical Assistant Professor of Medicine

**Nabeel Khan, MD**  
Associate Professor of  
Clinical Medicine  
Director of Gastroenterology  
Philadelphia VA Medical Center

**Jan-Michael A. Klapproth, MD**  
Associate Professor of  
Clinical Medicine

**Helen Lee, MD**  
Clinical Assistant Professor

**Neilanjan Nandi, MD**  
Associate Professor of  
Clinical Medicine

**Farzana Rashid, MD**  
Associate Professor of  
Clinical Medicine

**Akriti Saxena, MD**  
Assistant Professor of Clinical Medicine

**Robert B. Stein, MD**  
Clinical Professor of Medicine  
Director, Gastroenterology and  
Medical Director of Endoscopy  
at Penn Radnor

### Guest Faculty

**Brian G. Feagan, MD**  
Professor, Departments of Medicine,  
Epidemiology & Biostatistics  
Senior Scientific Director  
Robarts Clinical Trials Inc.  
University of Western Ontario  
London, Ontario, Canada

**Stephen B. Hanauer, MD**  
Clifford Joseph Barborka Professor  
Professor in Medicine,  
Gastroenterology and Hepatology  
Northwestern University  
Feinberg School of Medicine  
Chicago, IL

**Laura E. Raffals, MD**  
Consultant, Division of  
Gastroenterology and Hepatology  
Department of Internal Medicine  
Professor of Medicine  
Mayo Clinic  
Rochester, MN

**David Rubin, MD, MSCE**  
Joseph B. Kirsner Professor of Medicine  
Section Chief, Gastroenterology,  
Hepatology and Nutrition  
Co-Director, Digestive Diseases Center  
UChicago Medicine  
Chicago, IL

**William J. Sandborn, MD**  
Professor of Medicine  
Director, Inflammatory Bowel  
Disease Center  
Chief, Division of Gastroenterology  
University of California at San Diego  
San Diego, CA

\*Nurse Planner

---

**Nondiscrimination Statement** The University of Pennsylvania values diversity and seeks talented students, faculty, and staff from diverse backgrounds. The University of Pennsylvania does not discriminate on the basis of race, sex, sexual orientation, gender identity, religion, color, national or ethnic origin, age, disability, or status as a Vietnam Era Veteran or disabled veteran in the administration of educational policies, programs or activities; admissions policies; scholarship and loan awards; athletic, or other University administered programs or employment. Questions or complaints regarding this policy should be directed to Executive Director, Office of Affirmative Action and Equal Opportunity Programs, 3600 Chestnut Street, Sansom Place East Suite 228, Philadelphia, PA 19104-6106 or 215-898-6993 (Voice) or 215-898-7803 (TDD). [www.upenn.edu/affirm-action](http://www.upenn.edu/affirm-action).

**12TH UNIVERSITY OF PENNSYLVANIA  
INFLAMMATORY BOWEL  
DISEASE SYMPOSIUM**  
Update and Future Directions

Saturday, March 13, 2021

**VIRTUAL EDITION**

We strongly encourage you to register for this symposium online  
by check or credit card at  
<https://upenn.cloud-cme.com/IBD2021>

**Questions? Contact us at:**

penncme@mail.med.upenn.edu • Phone: 215-898-6400 or 215-898-8005

**Please note we are unable to accept faxed registration forms.**

Please print or type

\_\_\_\_\_  
Name (First) (Last)

\_\_\_\_\_  
Academic Degree

\_\_\_\_\_  
Medical Specialty

\_\_\_\_\_  
Affiliation (Hospital, Office, or Company)

\_\_\_\_\_  
Address (  Affiliation or  Home)

\_\_\_\_\_  
City State Zip

\_\_\_\_\_  
Phone Fax

\_\_\_\_\_  
E-mail

**Registration Fee**

(pre-payment is required to be officially registered)

- Practicing Physicians and Industry – \$100
- Penn Medicine and Affiliate Physicians – \$25
- Nurse Practitioners, Physician Assistants and other Healthcare Professionals,  
Residents and Fellows – \$0

**Payment Method**

- If you are paying by check or credit card, register online at  
<https://upenn.cloud-cme.com/IBD2021>.
- If you are paying by check, you may mail your completed registration form and check made payable to **The Trustees of the University of Pennsylvania/CME** to:  
Conference Manager, Office of Continuing Medical & Interprofessional Education  
3400 Civic Center Blvd, Smilow/SPE, Bldg 421, 6th Floor, JMCC/CME  
Philadelphia, PA 19104
- Do not include any credit card information on the registration form or share via email.