



Penn Medicine

Continuing Medical and
Interprofessional Education

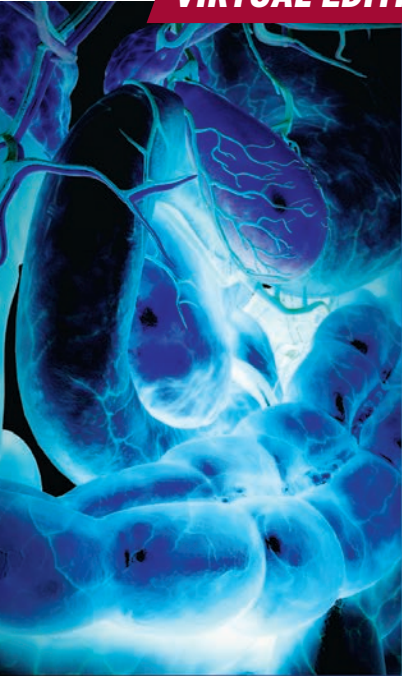
The Division of Gastroenterology/Department of Medicine
and the IBD Center at the Perelman School of Medicine

Present

12TH UNIVERSITY OF PENNSYLVANIA INFLAMMATORY BOWEL DISEASE SYMPOSIUM

Update and Future Directions

VIRTUAL EDITION



A CME/CNE-ACCREDITED SYMPOSIUM

Saturday, March 13, 2021

This conference will be
LIVE STREAMED

<https://upenn.cloud-cme.com/IBD2021>
www.med.upenn.edu/gastro

In Conjunction with



PENN
Digestive & Liver Services
University of Pennsylvania Health System

Endorsed by



AGA INSTITUTE



**CROHN'S
& COLITIS**
FOUNDATION



PROGRAM OVERVIEW & TARGET AUDIENCE

The 12th University of Pennsylvania Inflammatory Bowel Disease Symposium will highlight the advances in the treatment of IBD. The program will include lectures by nationally and internationally recognized experts which will be followed by interactive case presentations and panel discussions. A wide array of topics will be discussed including pharmacologic therapies and surgical interventions and optimal use of imaging and endoscopy. Participants will receive a comprehensive overview of the latest available research and clinical information on evaluation and management of patients with IBD.

This activity has been designed for gastroenterologists, gastrointestinal surgeons, gastroenterology fellows, internists, residents, physician assistants, nurse practitioners, clinical nurse specialists, dietitians, nutritionists and other health care professionals.

Learning Objectives

At the conclusion of this activity, participants should be able to:

- Appropriately prescribe biologics and other targeted therapies for IBD
- Utilize biomarkers and therapeutic drug monitoring to improve outcomes
- Implement treatment strategies in the management of IBD
- Successfully manage complications of IBD such as perianal fistula, stricture, and abscess

Hosting Department

The 12th Penn Inflammatory Bowel Disease Symposium is hosted by the Division of Gastroenterology, Department of Medicine and the IBD Center at the University of Pennsylvania.

Accreditation



JOINTLY ACCREDITED PROVIDER™
INTERPROFESSIONAL CONTINUING EDUCATION

In support of improving patient care, Penn Medicine is jointly accredited by the Accreditation Council for Continuing Medical Education (ACCME), the Accreditation Council for Pharmacy Education (ACPE), and the American Nurses Credentialing Center (ANCC), to provide continuing education for the healthcare team.

Designation of Credit

Physicians: Penn Medicine designates this live activity for a maximum of 7.75 AMA PRA Category 1 Credits™. Physicians should claim only the credit commensurate with the extent of their participation in the activity.



ABIM MOC: Successful completion of this CME activity, which includes participation in the evaluation component, enables the participant to earn up to 7.75 MOC points in the American Board of Internal Medicine's (ABIM) Maintenance of Certification (MOC) program. Participants will earn MOC points equivalent to the amount of CME credits claimed for the activity. It is the CME activity provider's responsibility to submit participant completion information to ACCME for the purpose of granting ABIM MOC credit.

Nurses: This program provides 7.75 contact hours.

Physician Assistants: AAPA accepts certificates of participation for educational activities certified for AMA PRA Category 1 Credit™ from organizations accredited by ACCME or a recognized state medical society. PAs may receive a maximum of 7.75 Category 1 credits for completing this activity.

Patient Safety Hours: Some presentations at this conference will be designated for Patient Safety hours. The details will be noted in the virtual handout.

Certificates and Transcripts: After the conference has concluded, all participants will receive a follow-up email with instructions and a link. Once participants submit the request for credit, the earned credits will be available for viewing on your transcript or available for printing at <https://upenn.cloud-cme.com>. Please note that the individual certificate will not be mailed.

Meeting Location

The 12th University of Pennsylvania Inflammatory Bowel Disease Symposium will be held Saturday, March 13, 2021 by live stream only. The virtual presentation will follow the scheduled agenda in real time.

Registration Fees

The registration fees for The 12th University of Pennsylvania Inflammatory Bowel Disease Symposium are the following: \$100 for physicians or industry representatives and free for nurse practitioners, physician assistants, other healthcare professionals, residents and fellows.

Penn Medicine and Affiliate Physicians working in the Department of Medicine may register for a discounted rate of \$25. To register at this reduced rate, you must have a valid Penn Medicine ID, sign in with your Pennkey and password at <https://upenn.cloud-cme.com> and register for this activity online.

The registration fee includes live stream access to the symposium and access to view the presentations (slides) online. In-person attendance is not permitted for this conference. All pre-registered attendees will receive a link and instructions to sign-in and join the virtual conference.

If you are registering with a credit card or check, please register online at <https://upenn.cloud-cme.com/IBD2021>.

We cannot accept faxed or mailed registration forms with credit card information. To pay by check, complete your registration online and mail a copy of your confirmation email with your check. See the registration form for mailing information.

Please note: mailed registrations can take up to 5-10 business days before they are received. We are experiencing longer delays receiving mail due to the COVID-19 pandemic. We encourage all attendees to register online with a credit card.

All registrations will be confirmed by email as long as your registration is received no later than **March 11, 2021**.

Cancellation and Refund Policy

Refund Policy: In order to process refunds for course withdrawals, cancellations must be received in writing by March 3, 2021 (subject to a service charge of \$15.00). No refunds will be issued thereafter.

Cancellation Policy: The University reserves the right to cancel or postpone any course due to unforeseen circumstances. In the event of cancellation or postponement, the University will refund registration fees.

Disclosures

Penn Medicine, Office of Continuing Medical and Interprofessional Education, adheres to the ACCME *Standards for Commercial Support*. Faculty and planning committee members' disclosure information will be made available in the conference materials and syllabi. Faculty members are also expected to disclose to participants any discussions of off-label and/or investigational uses of pharmaceutical products within their presentations.

Friday, March 13, 2021

AGENDA

7:45 AM – 8:00 AM
Sign into Virtual Platform

8:00 AM – 8:10 AM
Welcome
Gary Lichtenstein, MD

MEDICAL THERAPIES

Moderator: Gary Lichtenstein, MD

8:10 AM – 8:30 AM
Mesalamine and Steroids:
Role of the Old Standbys in 2021
Meenakshi Bewtra, MD, PhD, MPH

8:30 AM – 8:50 AM
Tofacitinib, Thiopurines,
and Methotrexate:
How and When to Use
Brian G. Feagan, MD

8:50 AM – 9:20 AM
Choosing Among Biologics
Faten N. Aberra, MD, MSCE

9:20 AM – 9:40 AM
Does Diet Matter
James D. Lewis, MD, MSCE

9:40 AM – 10:00 AM
Fecal Microbiota Transplantation
for C Difficile and as Primary Therapy
for IBD
Neilanjan Nandi, MD

10:00 AM – 10:10 AM
Case on Health Maintenance Issues
Moderator: Lauren Wilson, MSN, CRNP

10:10 AM – 10:30 AM
Panel Discussion /
Question and Answer Session
Moderator: Gary Lichtenstein, MD
Panel: Faten N. Aberra, MD, MSCE,
Meenakshi Bewtra, MD, PhD, MPH,
Brian G. Feagan, MD, James D. Lewis,
MD, MSCE, Neilanjan Nandi, MD and
Lauren Wilson, MSN, CRNP

10:30 AM – 10:50 AM Break

PROGNOSTICATION

Moderator: James D. Lewis, MD, MSCE

10:50 AM – 11:10 AM
Predicting Disease Course
and Response to Therapy
Gary Lichtenstein, MD

11:10 AM – 11:30 AM
What is the Target and
How do we Get There
Stephen B. Hanauer, MD

11:30 AM – 11:50 AM
Therapeutic Drug Monitoring:
In Whom, When and How?
Mark T. Osterman, MD, MSCE

11:50 AM – 12:10 PM
Case Discussion
Moderator: Caroline Kerner, MD, MSCE
Panel: Anna Buchner, MD, PhD and
Akriti Saxena, MD

12:10 PM – 12:30 PM
Panel Discussion /
Question and Answer Session
Moderator: James D. Lewis, MD, MSCE
Panel: Stephen B. Hanauer, MD,
Gary Lichtenstein, MD, Mark Osterman,
MD, MSCE and Akriti Saxena, MD

12:30 PM – 1:00 PM
Lunch

**SEVERE AND COMPLICATED IBD –
PART 1**

Moderator: Faten N. Aberra, MD, MSCE

1:00 PM – 1:20 PM
Management of the Hospitalized Patient
with IBD and Immune Checkpoint
Inhibitor Colitis
Farzana Rashid, MD

1:20 PM – 1:40 PM
Crohn's Disease:
Prevention of Postoperative Recurrence
Robert B. Stein, MD

1:40 PM – 2:00 PM
Fistula and Abscess in
Crohn's Disease: Optimal
Treatment Protocols
Jesse A. Green, MD

2:00 PM – 2:20 PM
Evaluation and Treatment of
Pouch Inflammation and Other
Pouch Complications
Laura E. Raffals, MD

2:20 PM – 2:40 PM
Case Discussion
Moderator: Shivali Berera, MD
Panel: Caroline Kerner, MD, MSCE and
Helen Lee, MD

2:40 PM – 3:00 PM
Panel Discussion /
Question and Answer Session
Moderator: Faten N. Aberra, MD, MSCE
Panel: Jesse A. Green, MD, Laura E.
Raffals, MD and Robert B. Stein, MD

3:00 PM – 3:20 PM Break

**SEVERE AND COMPLICATED IBD –
PART 2**

Moderator: Gary Lichtenstein, MD

3:20 PM – 3:40 PM
Preventing Complications of IBD
Nabeel Khan, MD

3:40 PM – 4:00 PM
Defining High Value Care for IBD
David Rubin, MD

4:00 PM – 4:20 PM
Novel Therapeutics Forthcoming for IBD
William J. Sandborn, MD

4:20 PM – 4:40 PM
Case Discussion
Moderator: Jan-Michael A. Klapproth, MD
Panel: Faten N. Aberra, MD, MSCE,
Gary Lichtenstein, MD and
Mark Osterman, MD, MSCE

4:40 PM – 5:00 PM
Question and Answer Session

5:00 PM
Adjourn



The following Course Directors & Faculty are from the Perelman School of Medicine at the University of Pennsylvania, Philadelphia, PA

Symposium Directors

Faten N. Aberra, MD, MSCE
Associate Professor of Medicine
Clinical Co-Director, Center for
Inflammatory Bowel Disease
Penn-CHOP Center for Digestive, Liver
and Pancreatic Medicine

James D. Lewis, MD, MSCE
Professor of Medicine
and Epidemiology
Associate Director, Center for
Inflammatory Bowel Disease
Interim Director of Gastroenterology at
Penn Presbyterian Medical Center

Faculty

Shivali Berera, MD
Assistant Professor of Clinical Medicine

Meenakshi Bewtra, MD, PhD, MPH
Assistant Professor of Medicine
and Epidemiology
Senior Scholar, CCEB

Anna Buchner, MD, PhD
Assistant Professor of Medicine

Jesse A. Green, MD
Professor of Clinical Medicine

Caroline Kerner, MD, MSCE
Clinical Assistant Professor of Medicine

Nabeel Khan, MD
Associate Professor of
Clinical Medicine
Director of Gastroenterology
Philadelphia VA Medical Center

Jan-Michael A. Klapproth, MD
Associate Professor of
Clinical Medicine

Gary R. Lichtenstein, MD
Professor of Medicine
Director, Center for Inflammatory
Bowel Disease

Lauren Wilson, MSN, CRNP*
Nurse Practitioner

Helen Lee, MD
Clinical Assistant Professor

Neilanjan Nandi, MD
Associate Professor of
Clinical Medicine

Mark T. Osterman, MD, MSCE
Associate Professor of Medicine
Associate Director of IBD Research

Farzana Rashid, MD
Associate Professor of
Clinical Medicine

Akriti Saxena, MD
Assistant Professor of Clinical Medicine

Robert B. Stein, MD
Clinical Professor of Medicine
Director, Gastroenterology and
Medical Director of Endoscopy
at Penn Radnor

Guest Faculty

Brian G. Feagan, MD
Professor, Departments of Medicine,
Epidemiology & Biostatistics
Senior Scientific Director
Robarts Clinical Trials Inc.
University of Western Ontario
London, Ontario, Canada

Stephen B. Hanauer, MD
Clifford Joseph Barborka Professor
Professor in Medicine,
Gastroenterology and Hepatology
Northwestern University
Feinberg School of Medicine
Chicago, IL

Laura E. Raffals, MD
Consultant, Division of
Gastroenterology and Hepatology
Department of Internal Medicine
Professor of Medicine
Mayo Clinic
Rochester, MN

David Rubin, MD, MSCE
Joseph B. Kirsner Professor of Medicine
Section Chief, Gastroenterology,
Hepatology and Nutrition
Co-Director, Digestive Diseases Center
Children's Hospital of Philadelphia
Philadelphia, PA

William J. Sandborn, MD
Professor of Medicine
Director, Inflammatory Bowel
Disease Center
Chief, Division of Gastroenterology
University of California at San Diego
San Diego, CA

*Nurse Planner

Nondiscrimination Statement The University of Pennsylvania values diversity and seeks talented students, faculty, and staff from diverse backgrounds. The University of Pennsylvania does not discriminate on the basis of race, sex, sexual orientation, gender identity, religion, color, national or ethnic origin, age, disability, or status as a Vietnam Era Veteran or disabled veteran in the administration of educational policies, programs or activities; admissions policies; scholarship and loan awards; athletic, or other University administered programs or employment. Questions or complaints regarding this policy should be directed to Executive Director, Office of Affirmative Action and Equal Opportunity Programs, 3600 Chestnut Street, Sansom Place East Suite 228, Philadelphia, PA 19104-6106 or 215-898-6993 (Voice) or 215-898-7803 (TDD). www.upenn.edu/affirm-action.

**12TH UNIVERSITY OF PENNSYLVANIA
INFLAMMATORY BOWEL
DISEASE SYMPOSIUM**
Update and Future Directions

Saturday, March 13, 2021

VIRTUAL EDITION

We strongly encourage you to register for this symposium online
by check or credit card at
<https://upenn.cloud-cme.com/IBD2021>

Questions? Contact us at:

penncme@mail.med.upenn.edu • Phone: 215-898-6400 or 215-898-8005

Please note we are unable to accept faxed registration forms.

Please print or type

Name (First) (Last)

Academic Degree

Medical Specialty

Affiliation (Hospital, Office, or Company)

Address (Affiliation or Home)

City State Zip

Phone Fax

E-mail

Registration Fee

(pre-payment is required to be officially registered)

- Practicing Physicians and Industry – \$100
- Penn Medicine and Affiliate Physicians – \$25
- Nurse Practitioners, Physician Assistants and other Healthcare Professionals, Residents and Fellows – \$0

Payment Method

- If you are paying by check or credit card, register online at <https://upenn.cloud-cme.com/IBD2021>.
- If you are paying by check, you may mail your completed registration form and check made payable to **The Trustees of the University of Pennsylvania/CME** to:
Conference Manager, Office of Continuing Medical & Interprofessional Education
3400 Civic Center Blvd, Smilow/SPE, Bldg 421, 6th Floor, JMCC/CME
Philadelphia, PA 19104
- Do not include any credit card information on the registration form or share via email.