

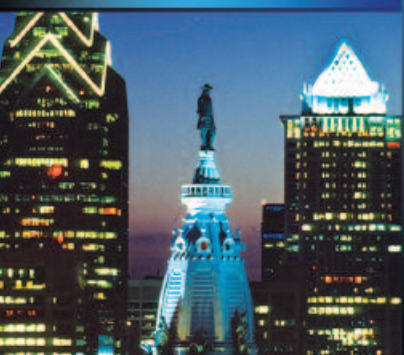
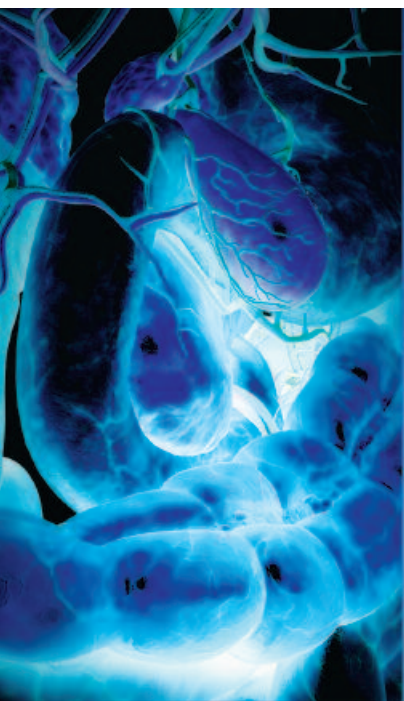
The Division of Gastroenterology/Department  
of Medicine and the IBD Center  
at the Perelman School of Medicine

*Present*

The Eleventh

# **PENN INFLAMMATORY BOWEL DISEASE SYMPOSIUM**

## **Update and Future Directions**



A CME/CNE-ACCREDITED SYMPOSIUM

**Friday and Saturday**  
**March 8-9, 2019**

The Logan Hotel Philadelphia  
1 Logan Square  
Philadelphia, PA 19103

<https://upenn.cloud-cme.com/IBD2019>  
[www.med.upenn.edu/gastro](http://www.med.upenn.edu/gastro)

In Conjunction with



**PENN**  
*Digestive & Liver Services*  
University of Pennsylvania Health System

Endorsed by



AGA INSTITUTE

**CC** **CROHN'S & COLITIS**  
**FA** **FOUNDATION OF AMERICA**  
PHILADELPHIA/DELAWARE VALLEY CHAPTER



## PROGRAM OVERVIEW & TARGET AUDIENCE

The *11th Penn Inflammatory Bowel Disease Symposium* will highlight the advances in diagnosis and treatment of IBD. The program will include lectures by nationally and internationally recognized experts which will be followed by interactive panel discussions. A wide array of topics will be discussed including the pathophysiology of IBD, pharmacologic therapies and surgical interventions. Participants will receive a comprehensive overview of the latest available research and clinical information on evaluation and management of patients with IBD.

This activity has been designed for gastroenterologists, gastrointestinal surgeons, GI fellows and residents, physician assistants, clinical nurse specialists, radiologists, pathologists, nutritionists and other health care professionals.

### Learning Objectives

At the conclusion of this activity, participants should be able to:

- Counsel patients about the role of nutrition and the microbiome in the management of inflammatory bowel disease
- Identify appropriate therapy for patients with inflammatory bowel disease, considering both the patients' characteristics and the potential benefits and harms of the available therapies
- Appropriately utilize medical and surgical endoscopy in the care of patients with inflammatory bowel disease
- Select appropriate treatment targets for patients with inflammatory bowel disease

### Hosting Department

The *11th Penn Inflammatory Bowel Disease Symposium* is hosted by the Division of Gastroenterology, Department of Medicine and the IBD Center at the University of Pennsylvania.

### Accreditation



JOINTLY ACCREDITED PROVIDER  
INTERPROFESSIONAL CONTINUING EDUCATION

In support of improving patient care, Penn Medicine is jointly accredited by the Accreditation Council for Continuing Medical Education (ACCME), the Accreditation Council for Pharmacy Education (ACPE), and the American Nurses Credentialing Center (ANCC), to provide continuing education for the healthcare team.

### Designation of Credit

**Physicians:** Penn Medicine designates this live activity for a maximum of 13.0 *AMA PRA Category 1 Credits*<sup>™</sup>. Physicians should claim only the credit commensurate with the extent of their participation in the activity.



**ABIM MOC:** Successful completion of this CME activity, which includes participation in the evaluation component, enables the participant to earn up to 13.0 MOC points in the American Board of Internal Medicine's (ABIM) Maintenance of Certification (MOC) program. Participants will earn MOC points equivalent to the amount of CME credits claimed for the activity. It is the CME activity provider's responsibility to submit participant completion information to ACCME for the purpose of granting ABIM MOC credit.

**Nurses:** This activity is approved for 13.0 contact hours.

**Physician Assistants:** AAPA accepts certificates of participation for educational activities certified for *AMA PRA Category 1 Credit*<sup>™</sup> from organizations accredited by ACCME or a recognized state medical society. PAs may receive a maximum of 13.0 Category 1 credits for completing this activity.

**Patient Safety Hours:** Some presentations at this conference will be designated for Patient Safety hours. The details will be noted in the course syllabus and Certificate.

**Certificates and Transcripts:** After the conference has concluded, all participants will receive a follow-up email with instructions and a link. Once participants submit the request for credit, the earned credits will be available for viewing on your transcript or available for printing at <https://upenn.cloud-cme.com>. Please note that the individual certificate will not be mailed.

## Registration Fees

The registration fees for the *11th Penn Inflammatory Bowel Disease Symposium* are \$450 for physicians and industry employees and \$200 for Healthcare Professionals, Residents and Fellows who register by January 18, 2019. The registration fee on or after January 19, 2019 is \$500 for physicians and industry employees and \$225 for healthcare professionals, residents and fellows.

The registration fee for Penn Medicine physicians is \$250 and \$125 for all other Penn Medicine employees or staff. A valid Penn Medicine ID is required to receive the special rate.

The registration fee includes attendance to the symposium, a program and a link to view the slide presentations online and credit certificate. Continental breakfasts and mid-morning break will be provided on both days. Lunch and an afternoon break will also be included on Friday.

If you are registering with a credit card, please register online at <https://upenn.cloud-cme.com/IBD2019>. You must log-in with your Penn ID or email and password or create a profile before you can register for an event.

We cannot accept faxed or mailed registration forms with credit card information. To pay by check, complete the registration form and mail it in with your check. Please see the registration form for mailing information. Please note: mailed registrations can take up to 5-10 business days before they are received. All registrations will be confirmed by email.

## Meeting Location

The *11th Penn Inflammatory Bowel Disease Symposium* will be held Friday-Saturday, March 8-9, 2019 at The Logan Hotel Philadelphia, 1 Logan Square, Philadelphia, PA 19103. This reborn, re-imagined and refined independent luxury hotel is a social magnet, infused with a confident, sophisticated, and artful point of view. The Logan conveys a sense of place, authentic, of the people, without pretense yet city-cultured and sophisticated. A special enclave for business and leisure travelers alike, nowhere else gets you as close to all the action in Philadelphia, or if you choose, providing all you need so you never need leave the hotel. A vibrant hub, here lies Philadelphia's true heart and soul of the city, teeming with extraordinary people and experiences.

For more information on The Logan Hotel, please visit their website at [www.theloganhotel.com](http://www.theloganhotel.com) or call 215-963-1500.

The Logan Hotel Philadelphia is offering "*Penn IBD Symposium 2019*" participants a special group rate (single or double occupancy) in a Deluxe King room at \$259.00 per night. These rates do not include the 15.5% sales and occupancy tax. The special room rate is available only until January 31, 2019 or until the block has filled (whichever comes first). Rates are subject to availability once the room block has filled. Please call The Logan Hotel Philadelphia reservations directly at 215-963-1500 or 1-800-445-8667. Be sure to identify yourself as a participant of "*11th Annual Penn IBD Symposium*" in order to receive the discounted overnight room rate.

You may also make your reservation online by visiting <http://group.curriocollection.com/PENNIBDSymposium>.



The following Course Directors & Faculty are from the Perelman School of Medicine at the University of Pennsylvania, Philadelphia, PA

### Symposium Directors

**Faten N. Aberra, MD, MSCE**  
Associate Professor of Medicine  
Clinical Co-Director, Center for  
Inflammatory Bowel Disease  
Penn-CHOP Center for Digestive, Liver  
and Pancreatic Medicine

**James D. Lewis, MD, MSCE**  
Professor of Medicine  
and Epidemiology  
Associate Director, Center for  
Inflammatory Bowel Disease

**Gary R. Lichtenstein, MD**  
Professor of Medicine  
Director, Center for Inflammatory  
Bowel Disease

**Lauren Wilson, CRNP**  
Nurse Practitioner

**Gary D. Wu, MD**  
Professor of Medicine  
Ferdinand G. Weisbrod Chair in  
Gastroenterology  
Co-Director, PennCHOP  
Microbiome Program

### Faculty

**Meenakshi Bewtra, MD, PhD, MPH**  
Assistant Professor of Medicine  
and Epidemiology  
Senior Scholar, CCEB

**Anna Buchner, MD, PhD**  
Assistant Professor of Medicine

**David S. Goldberg, MD, MSCE**  
Assistant Professor of Medicine  
Assistant Professor of Epidemiology in  
Biostatistics and Epidemiology

**Jesse A. Green, MD**  
Chief of Gastroenterology  
Penn Presbyterian Medical Center  
Professor of Clinical Medicine

**Caroline Kerner, MD, MSCE**  
Clinical Assistant Professor of Medicine

**Nabeel Khan, MD**  
Assistant Professor of Clinical Medicine  
Director of Gastroenterology  
Philadelphia VA Medical Center

**Jan-Michael A. Klapproth, MD**  
Associate Professor of Clinical Medicine

**Helen Lee, MD**  
Instructor of Medicine

**Mark T. Osterman, MD, MSCE**  
Associate Professor of Medicine  
Associate Director of IBD Research

**Farzana Rashid, MD**  
Assistant Professor of  
Clinical Medicine

**Misha A. Rosenbach, MD**  
Associate Professor of Dermatology

**Yechezkel Schneider, MS**  
Assistant Professor of Clinical Medicine

**Skandan Shanmugan, MD**  
Assistant Professor of Clinical Surgery

**Vesselin Tomov, MD, PhD**  
Assistant Professor of Medicine

## Guest Faculty

**Ashwin N. Ananthakrishnan, MBBS, MPH**  
Assistant Professor of Medicine  
Harvard Medical School  
Massachusetts General Hospital  
Boston, Massachusetts

**Brian G. Feagan, MD**  
Professor, Departments of Medicine  
Epidemiology & Biostatistics  
Senior Scientific Director  
Robarts Clinical Trials Inc.  
University of Western Ontario  
London, Ontario, Canada

**Stephen B. Hanauer, MD**  
Clifford Joseph Barborika Professor  
Professor in Medicine,  
Gastroenterology and Hepatology  
Northwestern University Feinberg  
School of Medicine  
Chicago, Illinois

**Edward V. Loftus, Jr., MD**  
Professor of Medicine  
Mayo Clinic  
Minneapolis, Minnesota

**Millie D. Long, MD, MPH**  
Associate Professor of Medicine  
Fellowship Director  
UNC Multidisciplinary Center for IBD  
Research and Treatment  
Chapel Hill, North Carolina

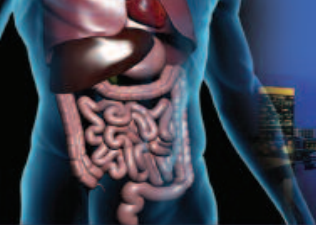
**Uma Mahadevan, MD**  
Professor of Medicine  
Medical Director of UCSF Center for  
Colitis and Crohn's Disease  
University of California at San Francisco  
San Francisco, California

**Gil Y. Melmed, MD**  
Director, Clinical Inflammatory  
Bowel Disease  
Director, Advanced Inflammatory  
Bowel Disease Fellowship Program  
Director, Clinical Research in the  
Division of Gastroenterology  
Cedars-Sinai Medical Center  
Los Angeles, California

---

**Services for the Disabled** If special arrangements are required for an individual with a disability to attend this meeting, please contact the Office of Continuing Medical and Interprofessional Education no later than February 22, 2019, at 215-898-6400.

**Nondiscrimination Statement** The University of Pennsylvania values diversity and seeks talented students, faculty, and staff from diverse backgrounds. The University of Pennsylvania does not discriminate on the basis of race, sex, sexual orientation, gender identity, religion, color, national or ethnic origin, age, disability, or status as a Vietnam Era Veteran or disabled veteran in the administration of educational policies, programs or activities; admissions policies; scholarship and loan awards; athletic, or other University administered programs or employment. Questions or complaints regarding this policy should be directed to Executive Director, Office of Affirmative Action and Equal Opportunity Programs, 3600 Chestnut Street, Sansom Place East Suite 228, Philadelphia, PA 19104-6106 or 215-898-6993 (Voice) or 215-898-7803 (TDD). [www.upenn.edu/affirm-action](http://www.upenn.edu/affirm-action).



## Friday, March 8

7:30 AM – 8:00 AM

**Registration and Continental Breakfast**

8:00 AM – 8:10 AM

**Welcome**

*Gary Lichtenstein, MD*

### **MICROBIOME, NUTRITION AND SMALL MOLECULE THERAPIES**

*Moderator: Gary D. Wu, MD*

8:10 AM – 8:30 AM

**IBD Immunology 101 for the Practitioner**

*Vesselin Tomov, MD, PhD*

8:30 AM – 8:50 AM

**The Microbiome and its Modulation with Antibiotics, Probiotics and FMT**

*Gary D. Wu, MD*

8:50 AM – 9:10 AM

**Nutrition as Therapy for IBD**

*James D. Lewis, MD, MSCE*

9:10 AM – 9:30 AM

**Mesalamine and Corticosteroids**

*Nabeel Khan, MD*

9:30 AM – 10:00 AM

**Immunomodulators: Tofacitinib, Thiopurines and Methotrexate**

*Ashwin N. Ananthakrishnan, MBBS, MPH*

10:00 AM – 10:20 AM

**Question and Answer Session**

10:20 AM – 10:40 AM Break

### **BIOLOGIC THERAPIES**

*Moderator: James D. Lewis, MD, MSCE*

10:40 AM – 11:00 AM

**Anti-TNF Therapy in the Biosimilar Era**

*Gary Lichtenstein, MD*

11:00 AM – 11:20 AM

**Anti-integrin Therapy**

*Millie D. Long, MD, MPH*

11:20 AM – 11:40 AM

**Anti-IL-12/23 Medications**

*Faten N. Aberra, MD, MSCE*

11:40 AM – 12:00 PM

**Medical Therapies you Might try When Nothing Else has Worked**

*Gil Y. Melmed, MD*

12:00 PM – 12:20 PM

**Case Discussion –**

**Choosing Between Old and New Therapies**

*Moderator: Jan-Michael Klapproth, MD*

*Panel: Gary Lichtenstein, MD, James Lewis, MD, MSCE, Millie D. Long, MD, MPH, Faten Aberra, MD, MSCE, Nabeel Khan, MD, Gil Y. Melmed, MD, Ashwin N. Ananthakrishnan, MBBS, MPH*

12:20 PM – 12:40 PM

**Question and Answer Session**

12:40 PM – 1:40 PM

**Lunch**

### **PATIENT-PHYSICIAN COMMUNICATION AND DECISION MAKING**

*Moderator: Faten N. Aberra, MD, MSCE*

1:40 PM – 2:00 PM

**Predicting the Natural History of IBD**

*Edward V. Loftus, Jr, MD*

2:00 PM – 2:20 PM

**Current Management of Flat and Raised Dysplasia**

*Anna Buchner, MD, PhD*

2:20 PM – 2:40 PM

**Counseling Patients About Tobacco Use and Medical and Recreational Marijuana**

*Uma Mahadevan, MD*

2:40 PM – 3:00 PM

**What Do Patients Hear When Doctors Talk About Risk and Benefits:**

**Paternalistic, Shared and Informed Decision Making in IBD**

*Meenakshi Bewtra, MD, PhD, MPH*

Friday and Saturday, March 8-9, 2019

# AGENDA

3:00 PM – 3:20 PM

**Case Discussion – Case(s) About Prognosis and Treatment Choice to Incorporate Concepts of Shared Decision Making Strategies**

*Moderators: Lauren Wilson, CRNP and Yechezkel Schneider, MS*

*Panel: Caroline Kerner, MD, MSCE, Edward Loftus, Jr., MD, Anna Buchner, MD, PhD, Uma Mahadevan, MD, Meenakshi Bewtra, MD, PhD, MPH*

3:20 PM – 3:40 PM

**Question & Answer Session**

3:40 PM – 4:00 PM Break

## **OPTIMAL USE OF MEDICATIONS TO TREAT IBD**

*Moderator: Gary Lichtenstein, MD*

4:00 PM – 4:20 PM

**How I Use Therapeutic Drug Monitoring to Improve Outcomes in IBD**

*Mark T. Osterman, MD, MSCE*

4:20 PM – 4:40 PM

**Treat to Target – Using Biomarkers and Endoscopy Appropriately in Clinical Practice**

*Stephen Hanauer, MD*

4:40 PM – 5:00 PM

**Preventing Complications of Immunosuppression**

*Millie D. Long, MD, MPH*

5:00 PM – 5:20 PM

**Case Discussion – Combining TDM and TTT**

*Moderator: Caroline Kerner, MD, MSCE*

*Panel: Mark Osterman, MD, MSCE, Stephen Hanauer, MD, Millie Long, MD, MPH, Gary Lichtenstein, MD, Helen Lee, MD*

5:20 PM – 5:40 PM

**Question and Answer Session**

5:40 PM

**Adjourn**

## **Saturday, March 9**

7:30 AM – 8:00 AM

**Registration and Continental Breakfast**

8:00 AM – 8:10 AM

**Introduction**

*Gary Lichtenstein, MD*

## **CHALLENGES WHEN MANAGING SEVERE IBD**

*Moderator: Gary Lichtenstein, MD*

8:10 AM – 8:30 AM

**Management of the Hospitalized Patient With Severe UC**

*Ashwin N. Ananthakrishnan, MBBS, MPH*

8:30 AM – 8:50 AM

**Crohn's Disease: Prevention of Postoperative Recurrence**

*Stephen Hanauer, MD*

8:50 AM – 9:10 AM

**Optimal Care of the Patient With Fistulizing Crohn's Disease**

*Jesse Green, MD and Skanden Shanmugan, MD*

9:10 AM – 9:30 AM

**Evaluation and Treatment of Pouch Inflammation**

*Edward V. Loftus, Jr, MD*

9:30 AM – 9:50 AM

**Case Discussion – Surgical Issues**

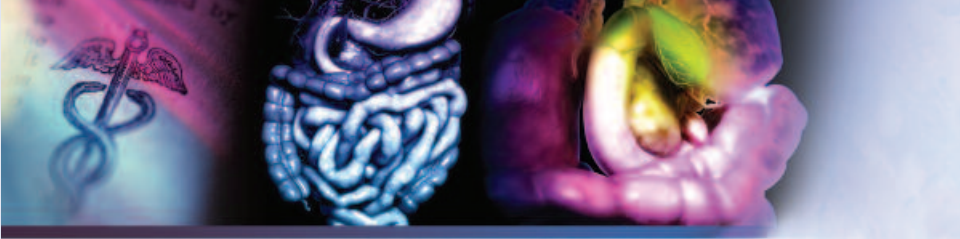
*Moderator: Farzana Rashid, MD*

*Panel: Ashwin N. Ananthakrishnan, MBBS, MPH, Stephen Hanauer, MD, Jesse Green, MD, Edward Loftus, Jr., MD, Gary Lichtenstein, MD, Skanden Shanmugan, MD*

9:50 AM – 10:10 AM

**Question and Answer Session**

10:10 AM – 10:30 AM Break



## **CHALLENGES WHEN MANAGING OUTPATIENTS WITH IBD**

*Moderator: Gary Lichtenstein, MD*

10:30 AM – 10:50 AM

### **Approach to Abnormal Liver Tests in Patients with IBD**

*David S. Goldberg, MD, MSCE*

10:50 AM – 11:10 AM

### **Dermatologic Complications in Patients With IBD**

*Misha A. Rosenbach, MD*

11:10 AM – 11:30 AM

### **Managing IBD Therapies in Pregnancy**

*Uma Mahadevan, MD*

11:30 AM – 11:50 AM

### **Evidence Based Algorithms for the Management of UC**

*Brian G. Feagan, MD*

11:50 AM – 12:10 PM

### **Evidence Based Algorithms for the Management of CD**

*Gil Y. Melmed, MD*

12:10 PM – 12:30 PM

### **What Can we Expect to Change in the Management of IBD in the Next Five Years**

*Brian G. Feagan, MD*

12:30 PM – 12:50 PM

### **Cases From the Audience**

*Moderator: Faten N. Aberra, MD, MSCE*

12:50 PM – 1:10 PM

### **Question and Answer Session**

1:10 PM – 1:20 PM

### **Concluding Remarks**

*Faten N. Aberra, MD, MSCE*

1:20 PM

### **Adjourn**

**Parking:** The Logan Hotel offers valet-only parking. The daily parking rate (up-to 8 hours) is \$33 and the overnight rate is \$55. If you prefer to self-park, please use The Logan Square Self Park Garage (located just behind The Logan). This garage is located at 1815 Cherry Street with a rate of \$27-\$33 for daily parking.

The symposium will not validate or reimburse any parking expenses.

## **Disclosures**

Penn Medicine, Office of Continuing Medical and Interprofessional Education, adheres to the ACCME *Standards for Commercial Support*. Faculty and planning committee members' disclosure information will be made available in the conference materials and syllabi. Faculty members are also expected to disclose to participants any discussions of off-label and/or investigational uses of pharmaceutical products within their presentations.

## **Cancellation and Refund Policy**

In order to process refunds for course withdrawals, cancellations must be received in writing by February 22, 2019 (subject to a service charge of 10% of the registration fee but not less than \$15.00). No refunds will be issued after February 22 2019.

The University reserves the right to cancel or postpone any course due to unforeseen circumstances. In the event of cancellation or postponement, the University will refund registration fees but is not responsible for related costs or expenses to participants, including cancellation fees assessed by hotels, airlines, and travel agencies.



The Eleventh  
**PENN INFLAMMATORY BOWEL  
DISEASE SYMPOSIUM**  
Update and Future Directions

**Registration Form**

Friday and Saturday  
March 8-9, 2019

If you are registering using your credit card, please register online at:  
<https://upenn.cloud-cme.com/IBD2019>

**Questions? Contact us at:**

Phone: 215-898-6400 or 215-898-8005 • [penncme@mail.med.upenn.edu](mailto:penncme@mail.med.upenn.edu)

**Please note we are unable to accept faxed registration forms.**

Please print or type

Name (First) \_\_\_\_\_ (Last) \_\_\_\_\_

Academic Degree \_\_\_\_\_

Medical Specialty \_\_\_\_\_

Affiliation (Hospital, Office, or Company) \_\_\_\_\_

Address (  Affiliation or  Home) \_\_\_\_\_

City \_\_\_\_\_ State \_\_\_\_\_ Zip \_\_\_\_\_

Phone \_\_\_\_\_ Fax \_\_\_\_\_

E-mail \_\_\_\_\_

**Registration Fee** (pre-payment is required to be officially registered)

**Registration received by January 18, 2019**

- Practicing Physicians and Industry – \$450
- Healthcare Professionals, Residents and Fellows – \$200

**Registration received on or after January 19, 2019**

- Practicing Physicians and Industry – \$500
- Healthcare Professionals, Residents and Fellows – \$225

**Penn Medicine Rates**

- Penn Medicine Practicing Physicians – \$250
- All other Penn Medicine Employees or Staff – \$125

Penn Medicine ID # \_\_\_\_\_

**Payment Method**

- If you are paying by credit card, please register online at <https://upenn.cloud-cme.com/IBD2019>.
- If you are paying by check, you may mail your completed registration form and check made payable to **The Trustees of the University of Pennsylvania/CME** to:  
Conference Coordinator, Penn Medicine, Office of Continuing Medical and Interprofessional Education, 150 Anatomy/Chemistry Building  
3620 Hamilton Walk, Philadelphia, PA 19104-6061
- Do not include any credit card information on the registration form or email any credit card information

Please Note: Walk-in registrants must bring payment to the program.  
Seating may be limited for walk-in registrants.



**Penn Medicine**  
Continuing Medical and  
Interprofessional Education

150 Anatomy/Chemistry Building  
3620 Hamilton Walk  
Philadelphia, PA 19104-6061

Non-Profit Org.  
U.S. Postage  
PAID  
Permit No. 2563  
Phila., PA 19104



**The Eleventh**

**PENN INFLAMMATORY BOWEL  
DISEASE SYMPOSIUM**

**Update and Future Directions**

A CME/CNE-ACCREDITED SYMPOSIUM



**Friday and Saturday, March 8-9, 2019**

The Logan Hotel Philadelphia  
1 Logan Square, Philadelphia, PA 19103