



**Penn Medicine**

Continuing Medical and  
Interprofessional Education

**IN-PERSON AND VIRTUAL**

# PENN MEDICINE STATE-OF-ART HEART FAILURE COURSE

**CME/CE-ACCREDITED CONFERENCE**



**FRIDAY-SATURDAY  
OCTOBER 21-22, 2022**

**In-Person Meeting Location**

Arthur H. Rubenstein Auditorium at the  
Smilow Center for Translational Research  
3400 Civic Center Blvd.  
Philadelphia, PA 19104

**Hosted by**  
Department of Medicine  
Division of Cardiology  
at Penn Medicine

<https://upenn.cloud-cme.com/heartfailure2022>



# PROGRAM OVERVIEW & TARGET AUDIENCE

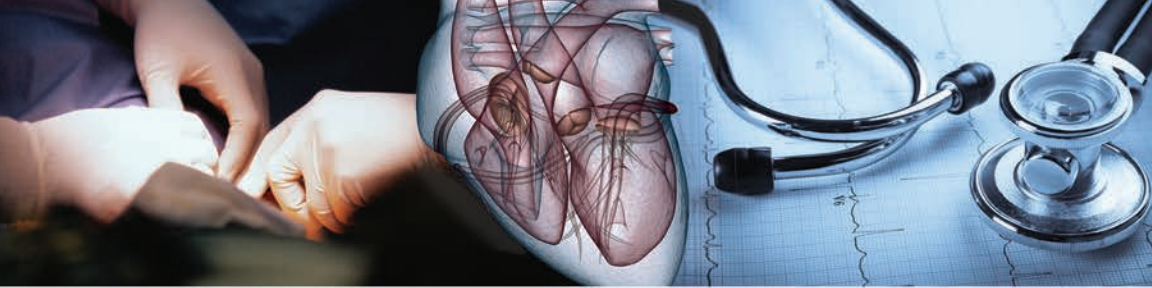
This course will provide a comprehensive, state of the art update on the management of heart failure focusing on the recently updated ACC/AHA Heart Failure Management Guidelines. The course is divided into six threads each focusing on a unique aspect of heart failure management from medical and device therapies, recognition of unique etiologies of heart failure, management of cardiogenic shock and selection for advanced therapies including transplant and ventricular assist devices. Each thread will have one or more cases to illustrate diagnostic and therapeutic challenges followed by panel discussions and audience participation to make the material actionable in daily practice. Two keynote speakers, one each day, will provide a visionary overview of the days' topics and provide valuable perspective from a thought leader.

This conference is designed for cardiologists, primary care physicians, nurse practitioners, physician assistants, nurses and others who see heart failure patients in the clinical setting.

## LEARNING OBJECTIVES

Upon completion of this activity, physicians and health care providers will be able to:

- Describe evidence based therapies for the treatment of heart failure including SGLT-2 inhibitors and soluble guanylate cyclase activators
- Recognize how to increase the percent of patients with heart failure with reduced ejection fraction receiving all 4 guideline directed classes of medications
- Describe evidence based therapies for hypertrophic cardiomyopathy and amyloid cardiomyopathy
- Explain the indications for TAVR and mitral valve edge to edge repairs
- Explain the indications for remote monitoring of heart failure patients
- Formulate appropriate approaches to overcoming barriers to achieving heart failure guideline directed medical and device therapies
- Identify patients who may benefit from cardiac contractility management, biventricular pacing and ICD's
- Describe patient characteristics that are associated with improved outcomes following revascularization procedures
- Identify evidence based therapies for heart failure with preserved ejection fraction
- Describe the impact of COVID-19 on the heart
- Explain the mechanisms of action and cardiac risks of cancer chemotherapeutic agents
- Identify clinical, laboratory, imaging and psychosocial factors that predict outcome in heart transplant and ventricular assist devices
- Describe the use of genetic testing in identifying genetic causes of cardiomyopathy
- Identify when to refer a patient to a multidisciplinary heart failure program
- Describe the roles and responsibilities of members of the interprofessional heart failure team



## HOSTING DEPARTMENT

The Penn Medicine State-of-Art Heart Failure Course is hosted by the Department of Medicine, Division of Cardiology at Penn Medicine.

## ACCREDITATION



In support of improving patient care, Penn Medicine is jointly accredited by the Accreditation Council for Continuing Medical Education (ACCME), the Accreditation Council for Pharmacy Education (ACPE), and the American Nurses Credentialing Center (ANCC), to provide continuing education for the healthcare team.

## DESIGNATION OF CREDIT

**Physicians:** Penn Medicine designates this live activity for a maximum of 14.5 *AMA PRA Category 1 Credits*<sup>™</sup>. Physicians should claim only the credit commensurate with the extent of their participation in the activity.



**ABIM MOC:** Successful completion of this CME activity, which includes participation in the evaluation component, enables the participant to earn up to 14.5 MOC points in the American Board of Internal Medicine's (ABIM)

Maintenance of Certification (MOC) program. Participants will earn MOC points equivalent to the amount of CME credits claimed for the activity. It is the CME activity provider's responsibility to submit participant completion information to ACCME for the purpose of granting ABIM MOC credit.

### Amount of Credit Available by Day:

Friday – 8.5 | Saturday – 6.0 | Total = 14.5

**Nurses:** This program provides 14.5 NCPD hours.

**Physician Assistants:** AAPA accepts certificates of participation for educational activities certified for *AMA PRA Category 1 Credit*<sup>™</sup> from organizations accredited by ACCME or a recognized state medical society. PAs may receive a maximum of 14.5 Category 1 credits for completing this activity.

**Pharmacists:** This knowledge based activity is approved for 14.5 ACPE contact hours of continuing pharmacy education credit. JA0000324-0000-22-034-L04-P.

**Certificates and Transcripts:** After the conference has concluded, all participants will receive a follow-up email with instructions and a link with instructions on how to claim their credit. Once participants submit the request for credit, the earned credits will be available for viewing on your transcript or available for printing at <https://upenn.cloud-cme.com>. Please note that the individual certificate will not be mailed.

## LIVE AND VIRTUAL PRESENTATIONS

The Penn Medicine State-of-Art Heart Failure Course will be held Friday-Saturday, October 21-22, 2022 by in-person or live-stream (virtual) attendance. The live and virtual presentations will follow the scheduled agenda in real time (EST).

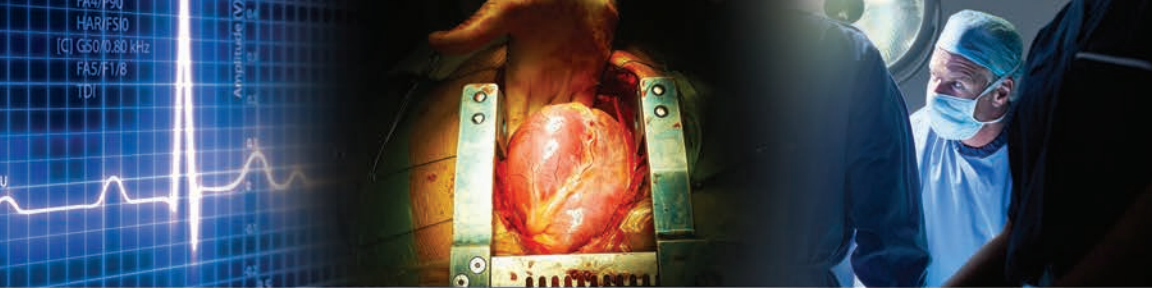
### TO ATTEND IN-PERSON:

#### Meeting Location

Arthur H. Rubenstein Auditorium at the Smilow Center for Translational Research  
3400 Civic Center Blvd., Philadelphia, PA 19104

### TO ATTEND BY LIVE-STREAM (VIRTUAL):

Attendees who are registered to attend virtually will receive an email including the link to join the symposium 48 hours in advance. All virtual attendees will be required to sign into the meeting using your first name, last name and email address in order to be marked as attended and receive credit.



## REGISTRATION FEES

### IN-PERSON ATTENDANCE:

Please register online at <https://upenn.cloud-cme.com/HeartFailure2022>. The fees to attend in-person are as follows: \$150 for physicians and industry attendees, \$50 for nurse practitioners, physician assistants and other healthcare professionals.

There is no fee for residents, fellows, students and Penn Medicine Division of Cardiology employees, faculty and staff to attend.

All pre-registered, in-person attendees will receive access to the conference, attendee booklet, continental breakfast, lunch and breaks. Registration also includes access to view the presentations online for one year. Due to the COVID-19 pandemic, walk-ins are discouraged. Please be sure to register in advance.

### LIVE-STREAM (VIRTUAL) ATTENDANCE:

Please register online at <https://upenn.cloud-cme.com/HeartFailure2022>. The fees to attend virtually are as follows: \$150 for physicians and industry attendees, \$50 for nurse practitioners, physician assistants and other healthcare professionals.

There is no fee for residents, fellows, students and Penn Medicine Division of Cardiology employees, faculty and staff to attend.

All pre-registered virtual attendees will receive an email that includes a link with instructions to sign-in and join the virtual conference 48 hours preceding the symposium, as well as the attendee booklet (downloadable PDF). Registration also includes access to view the presentations online for one year.

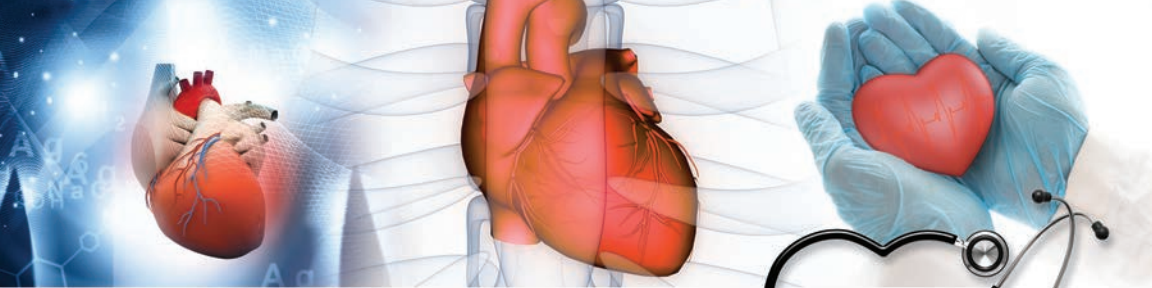
### Need to Register by Mail?

*Please note:* mailed registrations can take up to 5-10 business days before they are received. We encourage all attendees to register online. See the registration form for mailing instructions. All registrations will be confirmed by email as long as your registration is received no later than October 28, 2022.

## CANCELLATION POLICY

In order to process refunds for course withdrawals, cancellations must be received in writing by October 18, 2022 (subject to a service charge equivalent to 10% of the registration fee, but no less than \$25.00). No refunds will be issued thereafter.

The University reserves the right to cancel or postpone any course due to unforeseen circumstances. In the event of cancellation or postponement, the University will refund registration fees but is not responsible for related costs or expenses to participants, including cancellation fees assessed by hotels, airlines, and travel agencies.



## FACULTY

### **COURSE DIRECTOR**

**Lee R. Goldberg, MD, MPH**

Professor of Medicine

Section Chief, Advanced Heart Failure and Cardiac Transplant

### **COURSE CO-DIRECTORS**

**Pavan Atluri, MD**

Professor of Surgery

Director, Minimally Invasive and

Robotic Cardiac Surgery Program

Director, Cardiac Transplantation and

Mechanical Circulatory Support Program

### **GUEST SPEAKERS**

**Navin K. Kapur, MD, FAHA, FACC, FSCAI**

Associate Professor

Executive Director, The CardioVascular Center for  
Research and Innovation (CVCRI)

Director, Acute Mechanical Circulatory  
Support Program

Director, Interventional Research Laboratories

Director of Cardiac Biology Research Center,

Molecular Cardiology Research Institute (MCRI)

Tufts University School of Medicine

Boston, MA

**Himabindu Vidula, MD, MS**

Associate Professor of Medicine

Medical Director of Heart Transplantation

Cardiovascular Director of the

Comprehensive Sarcoidosis Program

University of Rochester Medical Center

Rochester, NY

### **PENN MEDICINE SPEAKERS**

Unless otherwise noted, speakers are members of the University of Pennsylvania Health System and/or Penn Medicine, Philadelphia PA.

**Michael Acker, MD**

Julian Johnson Professor of

Cardiothoracic Surgery

Chief, Division of Cardiovascular Surgery

Director, Penn Medicine Heart and

Vascular Center

**Alejandro E. De Feria Alsina, MD**

Cardiovascular Fellow

**Thomas P. Cappola, MD, ScM**

Herbert C. Rorer Professor in Medical Sciences

Director, Division of Cardiology

**Rhondalyn C. McLean, MD, MHS**

Associate Professor of Clinical Medicine

Medical Director, Heart Transplantation

**Clyde W. Yancy, MD, MSc, MACC, FAHA,  
MACP, FHFSA, FASPC (Hon.)**

Vice Dean, Diversity & Inclusion

Magerstadt Professor of Medicine

Professor of Medical Social Sciences

Chief, Division of Cardiology

Northwestern University

Feinberg School of Medicine

Associate Director

Bluhm Cardiovascular Institute

Northwestern Memorial Hospital

Chicago, IL

Deputy Editor

*JAMA Cardiology*

### **PATIENT SPEAKER**

**Paul Poff**

**Gene Chang, MD, PhD**

Assistant Professor of Clinical Medicine

Director, Cath Lab at

Penn Presbyterian Medical Center

**Marisa Cevasco, MD, MPH**

Assistant Professor of Surgery

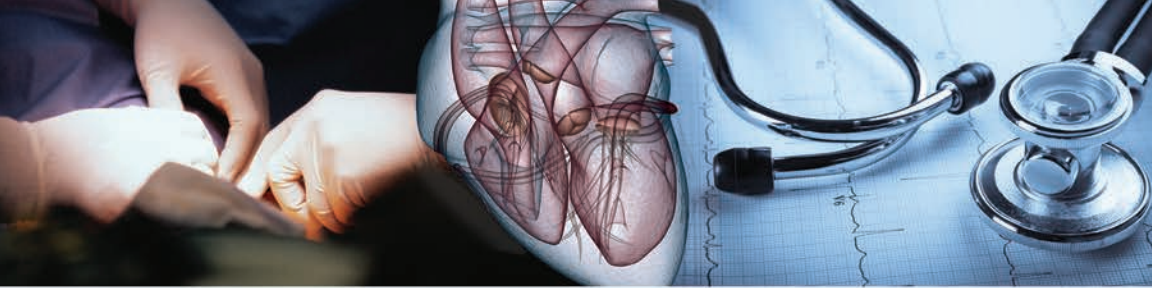
**Sharlene M. Day, MD**

Presidential Associate Professor

Director, Translational Research

Division of Cardiovascular Medicine and

Cardiovascular Institute



**Rosemary DeRosa, PA-C**

Title?

**Benjamin A. D'Souza, MD**

Associate Professor of Clinical Medicine

**Robert James Donovan, Jr., MD**

Title?

Penn Medicine Lancaster General Health  
Lancaster, PA

**Mark J. Epler, MD**

Clinical Assistant Professor of Surgery  
Division Chief, Thoracic and  
Cardiovascular Surgery  
Lancaster General Hospital  
Lancaster, PA

**Michael V. Genuardi, MD**

Assistant Professor of Clinical Medicine

**Debbie Gordon, MSW**

Heart Failure/Heart Transplant Social Worker

**Paul N. Fiorilli, MD**

Assistant Professor of Clinical Medicine  
Co-Director, Transcatheter Valve Program  
Associate Program Director, Interventional  
Cardiology Fellowship Training Program

**Michael G. Fradley, MD**

Associate Professor of Clinical Medicine  
Medical Director, Thalheimer Center  
for Cardio-Oncology

**Robert Hickey, PharmD**

Clinical Pharmacist

**Michael Ibrahim, MD, PhD**

Assistant Professor of Surgery  
Director, Mitral and Reconstructive Valve Surgery  
Director, Mechanical Circulatory Support  
Penn Presbyterian Medical Center

**Bonnie Ky, MD, MSCE**

Professor of Cardio-Oncology  
Associate Professor of Epidemiology  
in Biostatistics and Epidemiology  
Director, Penn Center for  
Quantitative Echocardiography  
Scientific Director, Thalheimer Center  
for Cardio-Oncology  
Director, Penn Cardio-Oncology Translational  
Center of Excellence Founders Associate

**Amy Marzolf, CRNP**

Nurse Practitioner

**Hansie M. Mathelier, MD, FACC**

Clinical Assistant Professor of Medicine

**Paul J. Mather, MD**

Professor of Clinical Medicine  
Physician Leader, Heart Failure  
Disease Management  
Director, Faculty Development,  
Division of Cardiovascular Medicine

**Jeremy A. Mazurek, MD**

Assistant Professor of Clinical Medicine  
Medical Director, Pulmonary  
Hypertension Program  
Director, Pulmonary Hypertension/Pulmonary  
Vascular Disease Fellowship

**Maria Reila Molina, CRNP, MSN**

Nurse Practitioner

**Rupal P. O'Quinn, MD, FACC**

Associate Professor of Clinical Medicine  
Director, Cardio-Oncology,  
Penn Presbyterian Medical Center

**Anjali Tiku Owens, MD**

Assistant Professor of Medicine  
Medical Director, Center for Inherited  
Cardiac Disease

**Arpit N. Patel, MD**

Assistant Professor of Clinical Anesthesiology  
and Critical Care

**Janice Pieretti, MD, FACC**

Associate Professor of Clinical Medicine

**Paul K. Poff**

Cardiac Sonographer

**Stuart B. Prentner, MD**

Assistant Professor of Clinical Medicine  
Associate Program Director, Advanced Heart  
Failure and Transplant Cardiology Fellowship

**Ylenia Quiaoit, CRNP**

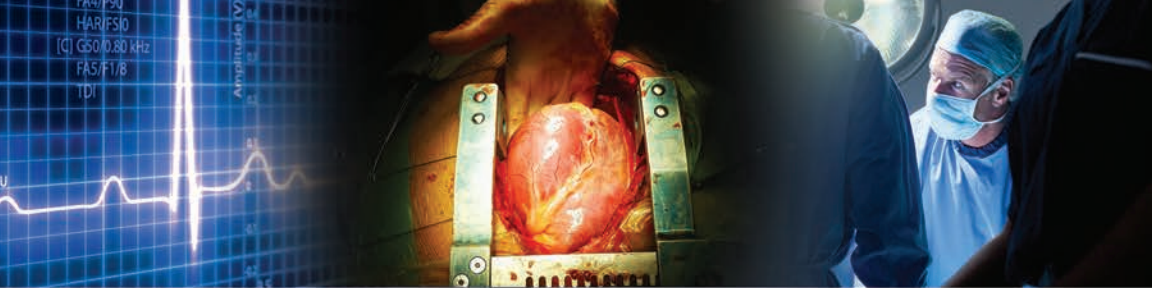
Adult Acute Care Nurse Practitioner

**Lisa D. Rathman, CRNP**

Nurse Practitioner, Cardiology  
Penn Medicine Lancaster General Health  
Lancaster, PA

**Nosheen Reza, MD**

Assistant Professor of Medicine  
Director, Penn Women in Cardiology Program  
Assistant Program Director, Cardiovascular  
Disease Fellowship Program



**Justin D. Roberts, DO**

Section Chief, Heart Failure and  
Mechanical Circulatory Support  
Lancaster General Hospital Patient Safety Officer  
Penn Medicine Lancaster General Health  
Lancaster, PA

**Roy S. Small, MD**

Medical Director, Clinical Research  
Penn Medicine Lancaster General Health  
Lancaster, PA

**Kiran Sidhu, MD, MPH**

Assistant Professor of Clinical Medicine

**Monique Tanna, MD**

Assistant Professor of Clinical Medicine

**Benjamin J. Vaccaro, MD**

Assistant Professor of Clinical Medicine

**Joyce W. Wald, DO**

Professor of Clinical Medicine  
Director, Practice Development  
Associate Director, Mechanical Circulatory  
Support Program

**W. Clay Warnick, MD**

Medical Director, Cardiovascular Service Line  
Penn Medicine Chester County Hospital  
West Chester, PA

**Payman Zamani, MD, MTR**

Assistant Professor of Medicine  
Director, Cardiovascular Phenotyping Unit

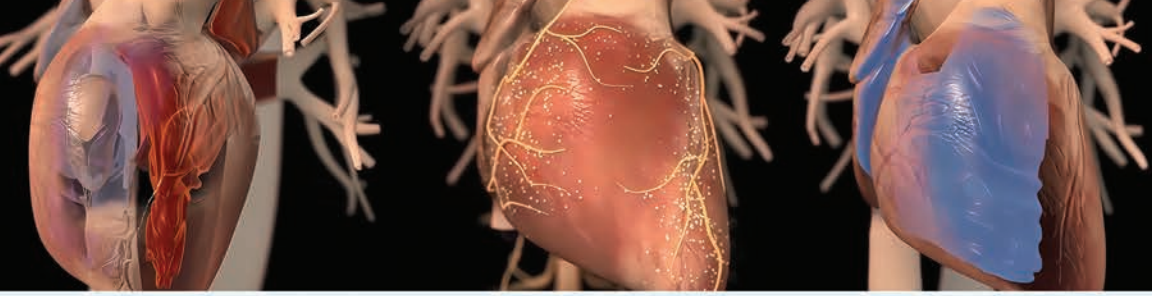
**Ross R. Zimmer, MD**

Director, Heart Failure Program  
Penn Presbyterian Medical Center

---

**DISCLOSURES**

Penn Medicine, Office of Continuing Medical and Interprofessional Education, adheres to the *ACCME Standards for Integrity and Independence in Accredited Continuing Education*. Faculty disclosure information will be made available in the conference materials and syllabi. Faculty members are also expected to disclose products or devices within to participants any discussions of off-label and/or investigational uses of pharmaceutical products or devices within their presentations.



## PENN MEDICINE STATE-OF-ART HEART FAILURE COURSE

### AGENDA | FRIDAY, OCTOBER 21, 2022

- 7:30 AM – 8:00 AM **In-person Sign-in**  
Sign into Virtual Platform
- 7:45 AM – 8:00 AM **Virtual Attendee Sign-in**  
(Broadcast goes live at 8:00 am)
- 8:00 AM – 8:10 AM **Opening Remarks**  
*Lee Goldberg, MD, MPH*
- 8:10 AM – 9:00 AM **Keynote**  
**Title TBD**  
*Clyde Yancy, MD*

#### THREAD I

##### **Systolic Heart Failure – How to Achieve Myocardial Recovery**

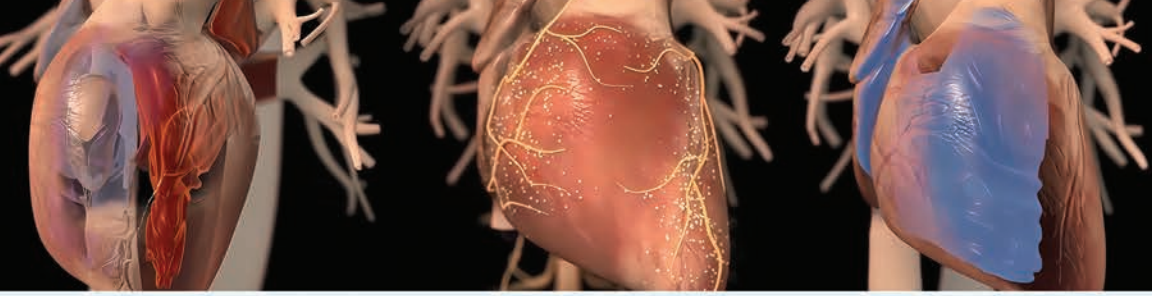
*Moderator: Robert Hickey and Daniel Schwartz, MD*

- 9:05 AM – 9:20 AM **New Heart Failure Guidelines**  
*Hansie Mathelier, MD*
- 9:20 AM – 9:35 AM **SGLT-2 Inhibitors and Vericiguat "How Sweet it is!"**  
*Monique Tanna, MD*
- 9:35 AM – 9:50 AM **EP and Heart Failure – "Keeping the Beat"**  
*Kiran Sidhu, MD*
- 9:50 AM – 10:05 AM **Panel Discussion with Q&A**
- 10:05 AM – 10:15 AM Break
- Moderator: Justin Roberts, DO*
- 10:15 AM – 10:30 AM **Remote Monitoring – "Keeping my eye on you"**  
*Roy Small, MD*
- 10:30 AM – 10:45 AM **Comorbidities**  
*Lisa Rathman, CRNP*
- 10:45 AM – 11:00 AM **Pulmonary Hypertension and Right Ventricular Failure**  
*Jeremy Mazurek, MD*
- 11:00 AM – 11:25 AM **Case 1**  
*W. Clay Warnick, MD and Ylenia Quiaoit, DNP*
- 11:25 AM – 11:40 AM **Panel Discussion with Q&A**
- 11:40 AM – 11:50 AM Break

**SERVICES FOR THE DISABLED** If special arrangements are required for an individual with a disability to participate this meeting, please contact the Office of Continuing Medical and Interprofessional Education no later than October 28, 2022, at 215-898-6400.

**NONDISCRIMINATION STATEMENT** The University of Pennsylvania values diversity and seeks talented students, faculty, and staff from diverse backgrounds. The University of Pennsylvania does not discriminate on the basis of race, sex, sexual orientation, gender identity, religion, color, national or ethnic origin, age, disability, or status as a Vietnam Era Veteran or disabled veteran in the administration of educational policies, programs or activities; admissions policies; scholarship and loan awards; athletic, or other University administered programs or employment. Questions or complaints regarding this policy should be directed to Executive Director, Office of Affirmative Action and Equal Opportunity Programs, 3600 Chestnut Street, Sansom Place East Suite 228, Philadelphia, PA 19104-6106 or 215-898-6993 (Voice) or 215-898-7803 (TDD). [www.upenn.edu/affirm-action](http://www.upenn.edu/affirm-action).





## PENN MEDICINE STATE-OF-ART HEART FAILURE COURSE

### THREAD 2

#### Repair, Replace, Revascularize or Cut Bait

Moderators: Michael Acker, MD and Michael Ibrahim, MD, PhD

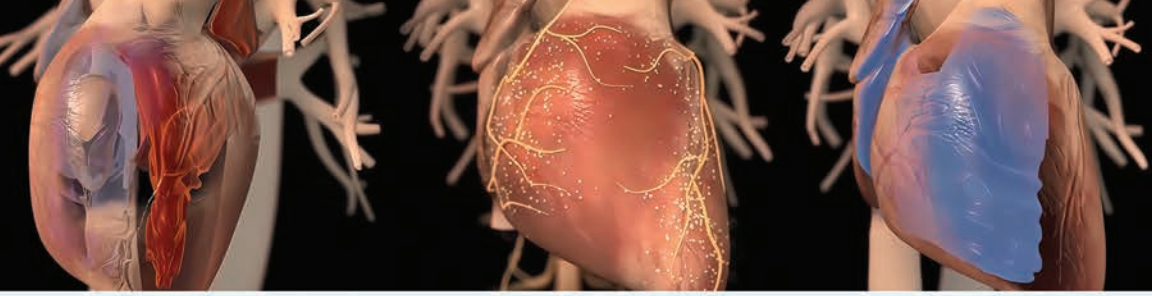
- 11:50 AM – 12:05 PM **Devices to Help the Failing Heart – “Just a Little Clip”**  
*Paul Fiorilli, MD*
- 12:05 PM – 12:20 PM **Valve Surgery**  
*Pavan Atluri, MD*
- 12:20 PM – 12:35 PM **Revascularization**  
*Gene Chang, MD, PhD*
- 12:35 PM – 1:20 PM Lunch
- 1:20 PM – 1:45 PM **Case 2**  
*Luise Holzhauser, MD and Rose DeRosa, MD*
- 1:45 PM – 2:00 PM **Panel Discussion with Q&A**
- 2:00 PM – 2:15 PM Break

### THREAD 3

#### Infiltrative and Inflammatory Cardiomyopathies

Moderator: Payman Zamani, MD and TBD

- 2:15 PM – 2:30 PM **Amyloid – “Gumming up the Works”**  
*Janice Pieretti, MD*
- 2:30 PM – 2:45 PM **Sarcoid – “My Heart is on Fire”**  
*Arpit Patel, MD*
- 2:45 PM – 3:00 PM **HFpEF – “Finally, Something to Do”**  
*Stuart Prenner, MD*
- 3:00 PM – 3:25 PM **Panel Discussion with Q&A**
- 3:25 PM – 3:35 PM Break
- 3:35 PM – 3:50 PM **Cardiac Effects of COVID – “Pandemic Palpitations”**  
*Michael Genuardi, MD*
- 3:50 PM – 4:05 PM **Cardio-Oncology “Good Drugs Gone Bad”**  
*Rupal O’Quinn, MD*
- 4:05 PM – 4:30 PM **Case 3**  
*Ross Zimmer, MD and Eman Rashed, MD*
- 4:30 PM – 4:45 PM **Panel Discussion with Q&A**
- 5:00 PM Adjourn
- 5:00 PM – 5:30 PM **Reception**
- 5:30 PM – 7:30 PM **Dinner and Fellow’s Heart Failure Jeopardy**  
*Jeopardy Hosts: Esther Pak, MD and Eliot Peyster, MD*



## PENN MEDICINE STATE-OF-ART HEART FAILURE COURSE

### AGENDA | SATURDAY, OCTOBER 22, 2022

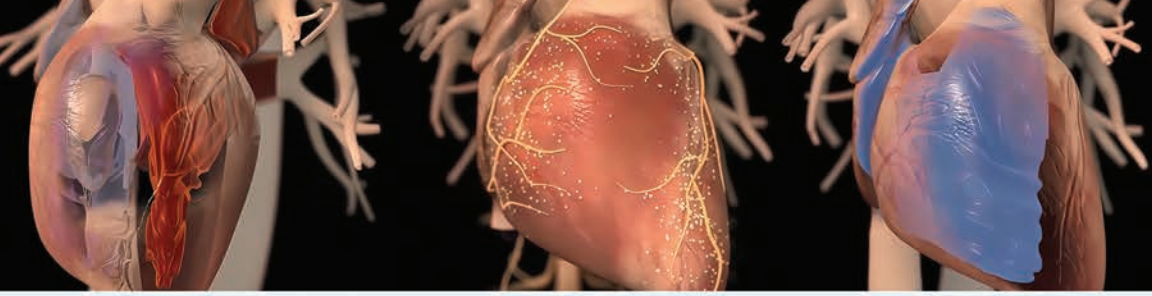
- 7:30 AM – 8:00 AM **In-person Sign-in**  
Sign into Virtual Platform
- 7:45 AM – 8:00 AM **Virtual Attendee Sign-in**  
(Broadcast goes live at 8:00 am)
- 8:00 AM – 8:10 AM **Welcome**  
*Rhondalyn McLean, MD*
- 8:10 AM – 8:45 AM **Advanced Therapies Selection Meeting “The Chosen Ones”**  
*Penn Medicine Multidisciplinary Advanced Therapies Team*
- 8:45 AM – 9:00 AM **Living with Heart Failure (or MCS or Transplant) – “No Pulse, No Problem”**  
*Paul Poff, Cardiac Sonographer*
- 9:00 AM – 9:50 AM **Keynote 2**  
**Title**  
*Navin Kapur, MD*
- 9:50 AM – 10:00 AM Break

#### THREAD 4

##### Advanced Therapies and Shock

Moderators: *Maria Molina, MSN, CRNP and Paul Mather, MD*

- 10:00 AM – 10:15 AM **Acute Shock and Shock Team**  
*Joyce Wald, DO*
- 10:15 AM – 10:30 AM **Heart Transplant – “Change of Heart”**  
*Rhondalyn McLean, MD*
- 10:30 AM – 11:00 AM **Mechanical Circulatory Support – “Go with the Continuous Flow”**  
*Hima Vidula, MD*
- 11:00 AM – 11:20 AM **Case 4**  
*Juan Ortega-Legaspi, MD and Swethika Sundaravel, MD*
- 11:20 AM – 11:35 AM **Panel Discussion with Q&A**
- 11:35 AM – 11:45 AM Break
- 11:45 AM – 12:00 PM **Overcoming Barriers to Advanced Therapies**  
*Debbie Gordon, MSW*
- 12:00 PM – 12:30 PM **Debate – VAD Outcomes are as Good as Heart Transplant “It’s a Wash”**  
*Pro: Mark Epler, MD*  
*Con: Marisa Cevasco, MD*
- 12:30 PM – 1:10 AM Lunch



## **PENN MEDICINE STATE-OF-ART HEART FAILURE COURSE**

### **THREAD 5**

#### **Genetics**

*Moderators: Sharlene Day, MD and Kenneth Margulies, MD*

- 1:10 PM – 1:25 PM **Genetic Dilated Cardiomyopathy – “It’s in the Genes”**  
*Anjali Owens, MD*
- 1:25 PM – 1:40 PM **Hypertrophic Cardiomyopathy**  
*Alejandro Eduardo De Feria Alsina, MD*
- 1:40 PM – 2:05 PM **Case 5**  
*Nosheen Reza, MD and Amy Marzolf, CRNP*
- 2:05 PM – 2:20 PM **Panel Discussion with Q&A**
- 2:20 PM – 2:30 PM Break

### **THREAD 6**

#### **The Future**

*Moderator: Thomas Cappola, MD*

- 2:30 AM – 2:45 PM **New Technologies That Might Just Work**  
*Lee Goldberg, MD, MPH*
- 2:45 PM – 3:00 PM **Novel Drugs**  
*Robert Hickey, PharmD*
- 3:00 PM Adjourn

**IN-PERSON AND VIRTUAL****PENN MEDICINE STATE-OF-ART  
HEART FAILURE COURSE****FRIDAY - SATURDAY  
OCTOBER 21-22, 2022**

We strongly encourage you to register for this conference online by check or credit card at <https://upenn.cloud-cme.com/heartfailure2022>

**Questions? Contact us at:**

penncme@penncme.upenn.edu • Phone: 215-898-6400 or 215-898-8005

Please note: we are unable to accept faxed registration forms.

Please print or type

Name (First) \_\_\_\_\_ (Last) \_\_\_\_\_

Academic Degree \_\_\_\_\_

Medical Specialty \_\_\_\_\_

Affiliation (Hospital, Office, or Company) \_\_\_\_\_

Address ( Affiliation or  Home) \_\_\_\_\_

City \_\_\_\_\_ State \_\_\_\_\_ Zip \_\_\_\_\_

Phone \_\_\_\_\_ Fax \_\_\_\_\_

E-mail \_\_\_\_\_

**REGISTRATION FEES**

(pre-payment is required to be officially registered)

**IN-PERSON ATTENDANCE:**

- Physicians and industry employees – \$150
- Nurse practitioners, physician assistants and other healthcare professionals – \$50
- There is no fee for Penn Medicine residents, fellows, students and Penn Division of Cardiovascular Medicine employees, faculty and staff to attend.
- I will attend the reception and dinner on Friday.

**LIVE-STREAM (VIRTUAL) ATTENDANCE:**

- Physicians and industry employees – \$150
- Nurse practitioners, physician assistants and other healthcare professionals – \$50
- There is no fee for Penn Medicine residents, fellows, students and Penn Division of Cardiovascular Medicine employees, faculty and staff to attend.

**PAYMENT METHOD**

- If you are paying by check or credit card, please register online at <https://upenn.cloud-cme.com/heartfailure2022>
- If you are paying by check, you may mail your completed registration form and check made payable to **The Trustees of the University of Pennsylvania/CME** to:
  - Conference Manager
  - Office of Continuing Medical & Interprofessional Education
  - Academic Programs, Penn Medicine, JMEC, SPE, 6th floor
  - 3400 Civic Center Blvd, Bldg. 421
  - Philadelphia, PA 19104-5162
- Do not include any credit card information on the registration form or share via email.