



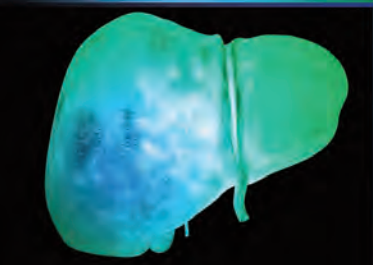
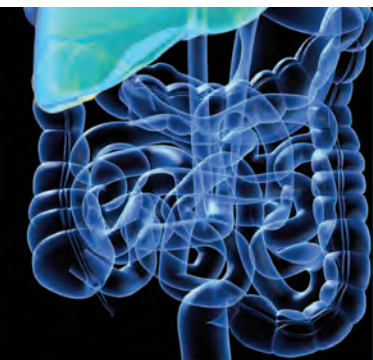
Penn Medicine

Continuing Medical and
Interprofessional Education

The Division of Gastroenterology
at Penn Medicine
Presents

13th Annual

PENN LIVE: **GI ENDOSCOPY AND** **LIVER DISEASE 2020**



A CME/CNE-ACCREDITED CONFERENCE

Friday–Saturday
March 20–21, 2020

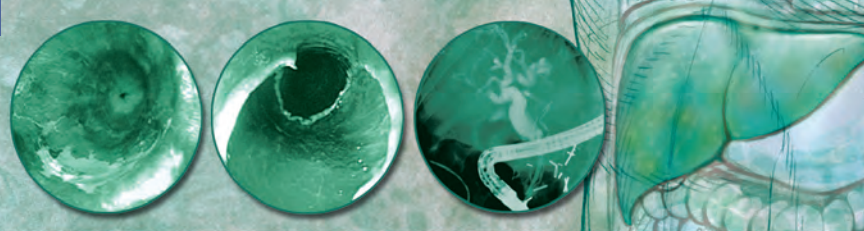
Arthur H. Rubenstein Auditorium
Smilow Center for
Translational Research
Perelman School of Medicine
University of Pennsylvania
3400 Civic Center Boulevard
Philadelphia, PA 19104

<https://upenn.cloud-cme.com/pennlive2020>

This conference is endorsed
by the American Society for
Gastrointestinal Endoscopy



American Society for
Gastrointestinal Endoscopy



PROGRAM OVERVIEW & TARGET AUDIENCE

This program is designed to demonstrate the application and execution of therapeutic gastrointestinal endoscopy. Using a format of lectures and live cases, our faculty will address challenges & practical solutions in the endoscopic management of digestive disorders including benign and malignant disorders of the esophagus, gastroduodenum, pancreas, bile ducts, and colorectum. Additional topics will include applications of endoluminal resection, radiofrequency ablation, argon plasma coagulation, ERCP, endoscopic ultrasound, polypectomy, and endoprosthetic therapies. The program will also focus on the current research and recommendations for managing patients with acute and chronic liver disease, including viral and autoimmune hepatitis, metabolic liver disease, portal hypertensive bleeding, refractory ascites, hepatic encephalopathy, liver transplantation and post liver transplant considerations.

This conference is designed for Gastroenterologists, Hepatologists, GI Surgeons, GI Radiologists, Gastroenterology Fellows, GI Nurses, Nurse Practitioners, Physician Assistants, Medical Residents and Medical Students.

Learning Objectives

Upon completion of this activity, participants should be able to:

- Discuss updates and practical approaches to managing patients with acute and chronic liver disease, including viral and autoimmune hepatitis, metabolic liver disease, portal hypertensive bleeding, refractory ascites, hepatic encephalopathy, liver transplantation and post liver transplant considerations
- Review and assess updates in digestive disease management
- Identify cognitive and technical challenges as well as practical solutions in the endoscopic management of digestive and related disorders including benign and malignant disorders of the esophagus, gastroduodenum, pancreas, bile ducts, and colorectum
- Describe indications and contraindications for therapeutic endoscopy procedures

Hosting Department

The *13th Annual Penn Live: GI Endoscopy and Liver Disease 2020* is hosted by the Division of Gastroenterology at Penn Medicine.



Accreditation



JOINTLY ACCREDITED PROVIDER™
INTERPROFESSIONAL CONTINUING EDUCATION

In support of improving patient care, Penn Medicine is jointly accredited by the Accreditation Council for Continuing Medical Education (ACCME), the Accreditation Council for Pharmacy Education (ACPE), and the American Nurses Credentialing Center (ANCC), to provide continuing education for the healthcare team.

Designation of Credit

Physicians: Penn Medicine designates this live activity for a maximum of 12.5 AMA PRA Category 1 Credits™. Physicians should claim only the credit commensurate with the extent of their participation in the activity.

Nurses: This program provides 12.5 contact hours.



ABIM MOC: Successful completion of this CME activity, which includes participation in the evaluation component, enables the participant to earn up to 12.5 MOC points in the American Board of Internal

Medicine's (ABIM) Maintenance of Certification (MOC) program. Participants will earn MOC points equivalent to the amount of CME credits claimed for the activity. It is the CME activity provider's responsibility to submit participant completion information to ACCME for the purpose of granting ABIM MOC credit.

Physician Assistants: AAPA accepts certificates of participation for educational activities certified for AMA PRA Category 1 Credit™ from organizations accredited by ACCME or a recognized state medical society. PAs may receive a maximum of 12.5 Category 1 credits for completing this activity.

Certificates and Transcripts: After the conference has concluded, all participants will receive a follow-up email with instructions and a link. Once participants submit the request for credit, the earned credits will be available for viewing on a transcript and certificates will be available for printing at <https://upenn.cloud-cme.com>. Please note that the individual certificate will not be mailed.

Disclosures

Penn Medicine, Office of Continuing Medical and Interprofessional Education, adheres to the *ACCME Standards for Commercial Support*. Faculty disclosure information will be made available in the conference materials and syllabi. Faculty members are also expected to disclose to participants any discussions of off-label and/or investigational uses of pharmaceutical products or devices within their presentations.

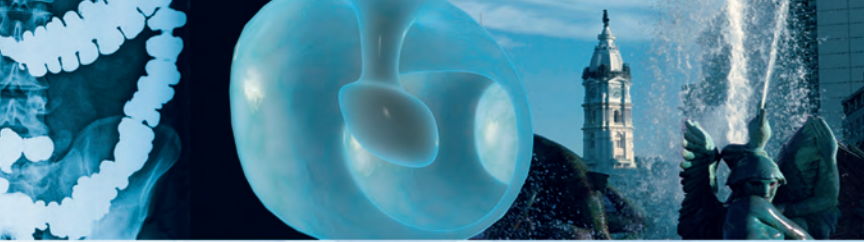
Registration Fees

The registration fees for the *13th Annual Penn Live: GI Endoscopy and Liver Disease 2020* are \$175 for physicians and industry employees and \$75 for nurse practitioners, physician assistants, healthcare professionals, residents and fellows.

Penn Medicine employees, faculty and staff: The registration fee is \$39. In order to register at the reduced rate, you must sign-in with your Pennkey and password to your account at <https://upenn.cloud-cme.com> and register online.

The registration fee includes attendance to the conference, a course booklet, a link to view the presentations online, continental breakfast, mid-morning and afternoon breaks as well as lunch each day.

If you are registering with a credit card, please register online at <https://upenn.cloud-cme.com/pennlive2020>. We cannot accept faxed or mailed registration forms with credit card information. To pay by check, complete the



registration form and mail it in with your check. Please see the registration form for mailing information.

Please note: mailed registrations can take up to 5-10 business days before they are received. All registrations will be confirmed by email as long as your registration is received no later than March 18, 2020.

Cancellation and Refund Policy

In order to process refunds for course withdrawals, cancellations must be received in writing by February 26, 2020 (subject to a service charge equivalent to 10% of the registration fee, but no less than \$15.00). No refunds will be issued thereafter.

The University reserves the right to cancel or postpone any course due to unforeseen circumstances. In the event of cancellation or postponement, the University will refund registration fees, but is not responsible for related costs or expenses to participants, including cancellation fees assessed by hotels, airlines, and travel agencies.

Meeting Location

The *13th Annual Penn Live: GI Endoscopy and Liver Disease 2020* will be held Friday-Saturday, March 20-21, 2020 at the Smilow Center for Translational Research, Perelman School of Medicine at the University of Pennsylvania, 3400 Civic Center Boulevard, Philadelphia, Pennsylvania, 19104.

Directions & Parking: The Arthur H. Rubenstein Auditorium is located on the 1st Floor level of the Smilow Translational Research Center. Smilow CTR is connected to the Perelman Center for Advanced Medicine and is located at 3400 Civic Center Blvd, Philadelphia, PA. We strongly recommend you use GPS or use an online driving directions site (such as mapquest.com, drivingdirections.com or googlemaps.com) for exact directions to and from your starting point or if you prefer, to take public transportation to and from campus, please visit <http://www.upenn.edu/services/transportation> for options.

On Friday, March 20th, the 3600 Civic Center Blvd Parking Garage is open for public parking. This garage is accessible from Civic Center Blvd and is located at Civic Center Blvd and West Service Drive (next to the Colket Research Center). Smilow TRC is about a 5 minute walk from this parking garage. Parking is \$20 per day. This garage is only open Monday-Friday. It is closed on weekends.

On Saturday, March 21st, the Perelman Center for Advanced Medicine garage (3400 Civic Center Blvd) is open to those attending Penn Live 2020. The conference will validate the parking fees on Saturday ONLY and only in the PCAM Parking Garage. Parking fees on Friday will not be validated or reimbursed.

Overnight Accommodation Options

There are no special room rates for course participants. Please contact the following hotels directly if you are interested in overnight room reservations:

The Study at University City Hotel
20 South 33rd Street
Philadelphia, PA 19104
215-387-1400
<https://www.thestudyatuniversitycity.com/>

Homewood Suites by Hilton
4109 Walnut Street
Philadelphia, PA 19104
215-382-1111
www.HomewoodUnivCity.com
**Homewood Suites offers a complimentary shuttle service*

The Inn at Penn
3600 Sansom Street
Philadelphia, PA 19104
215-222-0200
www.theinnatpenn.com
Sheraton University City Hotel
3600 Chestnut Street
Philadelphia, PA 19104
215-387-8000
www.sheraton.com/universitycity



With the exception of the guest faculty, the Course Directors & Faculty hold academic and/or clinical appointments from the Perelman School of Medicine at the University of Pennsylvania and Penn Medicine, Philadelphia, PA

Course Directors

Nuzhat A. Ahmad, MD

Professor of Medicine

Vice Chief of Gastroenterology and Hepatology

Associate Director of Endoscopy

Associate Chief for Clinical Affairs

Gregory G. Ginsberg, MD

Professor of Medicine

Executive Director of Endoscopy

David E. Kaplan, MD, MSc

Associate Professor of Medicine

Director of Hepatology

Philadelphia VA Medical Center

K. Rajender Reddy, MD

Ruimy Family President's Distinguished Professor of Medicine

Director of Hepatology

Director, Viral Hepatitis Center

Medical Director, Liver Transplantation

Guest Faculty

Ann Marie Joyce, MD

Clinical Associate Professor of Medicine

Beth Israel Lahey Hospital & Medical Center

Tufts University School of Medicine

Burlington, MA

Jennifer Lai, MD, MBA

Associate Professor of Medicine

University of California at San Francisco

San Francisco, CA

Nancy S. Reau, MD

Professor of Medicine

The Richard B. Capps Chair and Section Chief, Hepatology

Associate Director, Organ Transplantation

Rush University

Chicago, IL

Course Faculty

Sara Attalla, MD

Assistant Professor of
Clinical Medicine

Therese Bittermann, MD, MSCE

Assistant Professor of Medicine

Anna Buchner, MD, PhD

Assistant Professor of Medicine

Rotonya Carr, MD

Assistant Professor of Medicine
Co-Director, Human Metabolic
Tissue Resource, Institute of
Diabetes, Obesity and Metabolism

Crystale Cruz, MD

Instructor in Medicine
Advanced Endoscopy Fellow

Colleen Demopoulos, BSN, CAPA

Nurse Manager
Perioperative Services/Endoscopy
Hospital of the University
of Pennsylvania

Kimberly A. Forde, MD, MHS

Assistant Professor of Medicine
and Epidemiology
Senior Scholar, Center For Clinical
Epidemiology and Biostatistics (CCEB)

Immanuel Ho, MD

Clinical Professor of Medicine
Director of Interventional Endoscopy
Pennsylvania Hospital

Maarouf Hoteit, MD

Associate Professor of Clinical Medicine
Director of Liver Cancer Program
Associate Medical Director,
Liver Transplantation

David L. Jaffe, MD

Professor of Clinical Medicine
Advisory Dean, Medical Students

Michael L. Kochman, MD

Wilmott Family Professor of Medicine
Director, Advanced Endoscopic Training
Director, Endoscopy Training
Director, Center for Endoscopic
Innovation, Research, and Training

Peter Jun Woo Lee, MBChB

Assistant Professor of
Clinical Medicine

David C. Metz, MD

Professor of Medicine

Frederick A. Nunes, MD

Clinical Professor of Medicine
Director of Gastroenterology
Pennsylvania Hospital

Kashyap Panganamamula, MD

Clinical Professor of Medicine
University of Pennsylvania
School of Medicine
Division of Gastroenterology

Stacey Prenner, MD

Assistant Professor of
Clinical Medicine

James C. Reynolds, MD

Professor of Clinical Medicine
Chief of Gastroenterology

Kenneth D. Rothstein, MD

Professor of Clinical Medicine
Director of Regional Hepatology

Monica Saumoy, MD, MS

Assistant Professor of
Clinical Medicine

Marina Serper, MD, MSc

Assistant Professor of Medicine

Steven Solga, MD

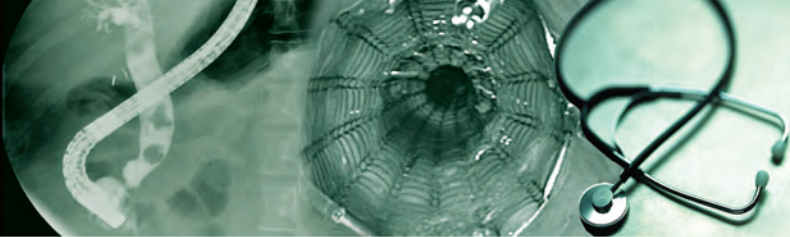
Associate Professor of
Clinical Medicine
Director, Transplant Hepatology
Fellowship

Joseph Triggs, MD

Instructor in Medicine
Advanced Endoscopy Fellow

Ethan M. Weinberg, MD, MS

Assistant Professor of
Clinical Medicine



Friday, March 20, 2020

7:30 AM

Registration and Continental Breakfast

8:00 AM

Welcome/Introduction

Nuzhat Ahmad, MD, Gregory Ginsberg, MD and James Reynolds, MD

8:15 AM

Endoscopic Therapy for Chronic Pancreatitis

Peter Lee, MBChB

8:30 AM

Live Cases

Moderators: Ann Marie Joyce, MD and Peter Lee, MBChB

9:30 AM

Difficult Cannulation in ERCP

Sara Attalla, MD

10:00 AM **Break**

10:15 AM

Update on Extreme Endoscopy

Monica Saumoy, MD, MS

10:45 AM

Live Cases

Moderators: Ann Marie Joyce, MD and Monica Saumoy, MD, MS

11:30 AM

Endoscopic Management of Colonic Obstruction

Ann Marie Joyce, MD

12:00 PM **Lunch**

1:00 PM

Update on GI Neuroendocrine Tumors

David Metz, MD

1:15 PM

Live Cases

Moderators: David Metz, MD and David Jaffe, MD

2:15 PM

Update on Endoscopy in IBD

Anna Buchner, MD

2:30 PM **Break**

3:00 PM

Live Cases

Moderators: Immanuel Ho, MD and Kashyap Panganmamula, MD

4:15 PM

13th William "Bob" Long Lecture

How do we Work up an Indeterminate Biliary Stricture?

Ann Marie Joyce, MD

5:00 PM **Adjourn**

Faculty will allow 5 minutes at the end of their presentation for Q&A.

Services for the Disabled If special arrangements are required for an individual with a disability to attend this conference, please contact the Office of Continuing Medical and Interprofessional Education no later than February 26, 2020 at 215-898-8005.

Nondiscrimination Statement The University of Pennsylvania values diversity and seeks talented students, faculty, and staff from diverse backgrounds. The University of Pennsylvania does not discriminate on the basis of race, sex, sexual orientation, gender identity, religion, color, national or ethnic origin, age, disability, or status as a Vietnam Era Veteran or disabled veteran in the administration of educational policies, programs or activities; admissions policies; scholarship and loan awards; athletic, or other University administered programs or employment. Questions or complaints regarding this policy should be directed to Executive Director, Office of Affirmative Action and Equal Opportunity Programs, 3600 Chestnut Street, Sansom Place East Suite 228, Philadelphia PA 19104-6106 or 215-898-6993 (Voice) or 215- 898-7803 (TDD). www.upenn.edu/affirm-action

Friday and Saturday
March 20-21, 2020

AGENDA

Saturday, March 21, 2020

Session I

Moderator: David E. Kaplan, MD, MSc

7:30 AM

Registration and Continental Breakfast

8:00 AM

Remaining Challenges in Hepatitis C

Nancy Reau, MD

8:30 AM

Management of Nutrition and Frailty in Cirrhotic Patients

Jennifer Lai, MD

9:00 AM

Achieving Weight Loss in NAFLD

Rotonya Carr, MD

9:35 AM

Case-Based Discussion

Moderator: Frederick Nunes, MD

Panelists: Kenneth Rothstein, MD,

Jennifer Lai, MD and

Rontonya Carr, MD

10:05AM **Break**

10:30 AM

A Middle-aged Woman With Hematemesis

Kimberly A. Forde, MD, PhD

11:00 AM

Palliative Care in End-Stage Liver Disease

Jennifer Lai, MD

Session II

Moderator: Maarouf Hoteit, MD

11:30 AM

Management of Liver Disease in Pregnancy

Nancy Reau, MD

11:55 AM **Lunch**

12:55 PM

Telemedicine for Liver Disease

Marina Serper, MD

1:05 PM

Alcoholic Liver Disease

Steve Solga, MD

1:40 PM

A Young Woman with an Abnormal Liver Ultrasound

Stacey Prenner, MD

2:05 PM

Live Donation in Liver Transplant

Therese Bittermann, MD

2:30 PM

Wrap-up/Questions from the Audience

Panelists: Maarouf Hoteit, MD and

David E. Kaplan, MD, MSc

2:45 PM **Adjourn**

Faculty will allow 5 minutes at the end of their presentation for Q&A.

13th Annual

PENN LIVE: GI ENDOSCOPY AND LIVER DISEASE 2020

Registration Form

Friday and Saturday
March 20-21, 2020

If you are registering using your credit card, please register online at:
<https://upenn.cloudcme.com/pennlive2020>

Questions? Contact us at:

Phone: 215-898-6400 or 215-898-8005 • penncme@pennmedicine.upenn.edu

Please note we are unable to accept faxed registration forms.

Please print or type

Name (First)

(Last)

Academic Degree

Medical Specialty

Affiliation (Hospital, Office, or Company)

Address (☐ Affiliation or ☐ Home)

City

State

Zip

Phone

Fax

E-mail

Registration Fee (pre-payment is required to be officially registered)

- ☐ \$175.00 for Practicing Physicians and Industry Representatives
- ☐ \$75.00 for Nurses, Healthcare Professionals, Residents and Fellows
- ☐ \$39.00 for Penn Medicine Employees, Faculty and Staff

Penn Medicine ID # _____

Payment Method

- If you are paying by credit card, please register online at
<https://upenn.cloud-cme.com/pennlive2020>
- If you are paying by check, you may mail your completed registration form and check made payable to **The Trustees of the University of Pennsylvania/CME** to: Conference Manager, Office of Continuing Medical & Interprofessional Education Academic Programs, Penn Medicine JMEC, SPE, 6th floor, 3400 Civic Center Blvd, Bldg. 421 Philadelphia, PA 19104-5162
- Do not include any credit card information on the registration form or email any credit card information

Please Note: Walk-in registrants must bring payment to the program.

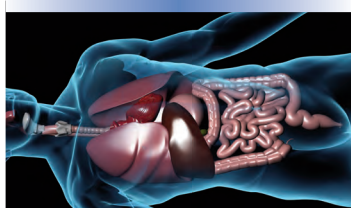
Seating may be limited for walk-in registrants.



Penn Medicine
Continuing Medical and
Interprofessional Education

Office of Continuing Medical & Interprofessional Education
Academic Programs, Penn Medicine
JMEC, SPE, 6th floor, 3400 Civic Center Blvd, Bldg. 421
Philadelphia, PA 19104-5162

Non-Profit Org.
U.S. Postage
PAID
Permit No.
2563



13th Annual

PENN LIVE: GI ENDOSCOPY AND LIVER DISEASE 2020

A CME/CNE-ACCREDITED CONFERENCE

**Friday and Saturday
March 20-21, 2020**

Arthur H. Rubenstein Auditorium
Smilow Center for Translational Research
Perelman School of Medicine
University of Pennsylvania
3400 Civic Center Boulevard
Philadelphia, PA 19104

**This conference is endorsed by the
American Society for Gastrointestinal Endoscopy**

