



Penn Medicine

Continuing Medical and
Interprofessional Education

IN-PERSON AND VIRTUAL

**PENN MEDICINE AND CHI ST. VINCENT INFIRMARY SYMPOSIUM:
ADVANCES IN CARDIAC SURGERY,
HEART FAILURE AND NHLBI/CTSN
CLINICAL TRIALS**

CME/CE-ACCREDITED CONFERENCE

SATURDAY, NOVEMBER 5, 2022

8:00 AM – 4:40 PM CDT

In-Person Meeting Location

Little Rock Marriott at
Statehouse Convention Center
Grand Ballroom Salon B & C
3 Statehouse Plaza
Little Rock, AR 72201

Hosted by

Cardiovascular Surgery
at Penn Medicine
&
CHI St. Vincent Infirmary

<https://upenn.cloud-cme.com/infirmarysymposium2022>



PROGRAM OVERVIEW & TARGET AUDIENCE

Our goal is to educate the participants in the topics of genetic cardiomyopathies, heart failure and VADs, advanced aortic disease, mitral valve disease, and postoperative atrial fibrillation. Additional topics will include the prevention of stroke during cardiac surgery discussion, implementation science, examining the opioid epidemic and improving inclusion, equality and diversity.

We will also discuss the history of the NHLBI Cardiac Surgical Network Clinical Trials (CTSN), its successes, study outcomes and future trials as well as hurdles to overcome when conducting clinical trials. The program will be taught by members of Penn Medicine and CHI St. Vincent faculty, as well as guest speakers from the NHLBI and CTSN.

The course is structured to meet the interests and educational needs of internists, cardiologists, cardiac surgeons and cardiovascular APPs.

LEARNING OBJECTIVES

Upon completion of this activity, physicians and health care providers will be able to:

- Apply new cutting edge PCI techniques
- Discuss advances in genetic cardiomyopathy
- Review and assess advances in the treatment of atrial fibrillation post cardiac surgery
- Identify approaches to functional MR in patients with heart failure
- Identify triggers for percutaneous ventricular assist devices (VADs) advanced therapies for heart failure
- Review advanced aortic valve disease
- Describe the use of mechanical circulatory support in the treatment of cardiogenic shock
- Describe neuroprotection and stroke during cardiac surgery, using new investigational devices
- Discuss implementation science and mentoring the next generation of investigators
- Establish cardiac surgery opioid stewardship, patient evaluation and management strategies amidst an overwhelming national opioid overdose epidemic
- Identify the important approaches to improving inclusion, equality and diversity in the healthcare settings and clinical trials
- Discuss the history of the NHLBI Cardiac Surgical Network Trials
- Discuss challenges conducting randomized cardiac surgical trials and lessons learned

HOSTING DEPARTMENT

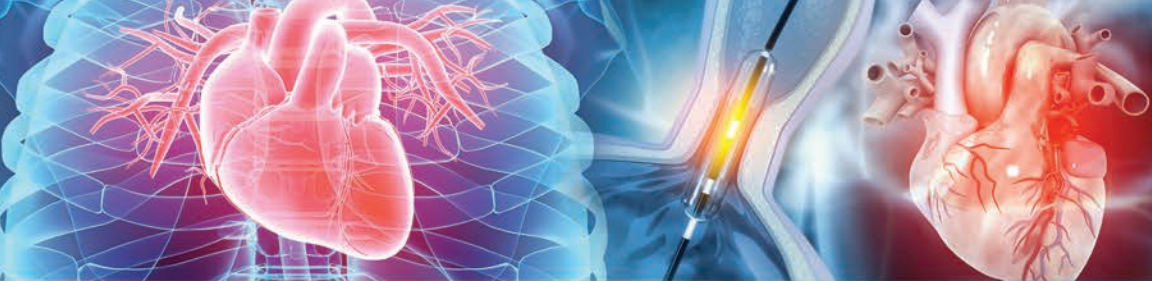
Penn Medicine and CHI St. Vincent Infirmiry Symposium: Advances in Cardiac Surgery, Heart Failure and NHLBI/CTSN Clinical Trials is hosted by the Division of Cardiovascular Surgery at Penn Medicine, Philadelphia, PA and the CHI St. Vincent Infirmiry, Little Rock, Arkansas.

ACCREDITATION



JOINTLY ACCREDITED PROVIDER®
INTERPROFESSIONAL CONTINUING EDUCATION

In support of improving patient care, Penn Medicine is jointly accredited by the Accreditation Council for Continuing Medical Education (ACCME), the Accreditation Council for Pharmacy Education (ACPE), and the American Nurses Credentialing Center (ANCC), to provide continuing education for the healthcare team.



DESIGNATION OF CREDIT

Physicians: Penn Medicine designates this live activity for a maximum of 7.5 *AMA PRA Category 1 Credits™*. Physicians should claim only the credit commensurate with the extent of their participation in the activity.

Nurses: This program provides 7.5 NCPD hours.

Physician Assistants: Penn Medicine has been authorized by the American Academy of PAs (AAPA) to award AAPA Category 1 CME credit for activities planned in accordance with AAPA CME Criteria. This activity is designated for 7.5 AAPA Category 1 CME credits. PAs should only claim credit commensurate with the extent of their participation.

Certificates and Transcripts: After the conference has concluded, all participants will receive a follow up email with a link and instructions on how to claim their credit. Once participants submit the request for credit, the earned credits will be available for viewing on your transcript or available for printing at <https://upenn.cloud-cme.com>. Please note that the individual certificate will not be mailed.

LIVE AND VIRTUAL PRESENTATIONS

Penn Medicine and CHI St. Vincent Infirmiry Symposium will be held Saturday, November 5, 2022 by in-person or live-stream (virtual) attendance. The live and virtual presentations will follow the scheduled agenda in real time (EDT).

TO ATTEND IN-PERSON:

Meeting Location

Little Rock Marriott at Statehouse Convention Center
Grand Ballroom Salon B & C
3 Statehouse Plaza
Little Rock, AR 72201

TO ATTEND BY LIVE-STREAM (VIRTUAL):

Attendees who are registered to attend virtually will receive an email including the link to join the symposium, 48 hours in advance. All virtual attendees will be required to sign in to the meeting using your first name, last name and email address in order to be marked as attended, receive credit and view the recordings.

REGISTRATION FEES

IN-PERSON ATTENDANCE:

Please register online at <https://upenn.cloud-cme.com/infirmarysymposium2022>. The fees to attend in-person are as follows: \$90 for physicians and industry attendees, \$70 for nurse practitioners, physician assistants and other healthcare professionals, and \$50 for residents, fellows and students, and \$35 for Penn Medicine and CHI St. Vincent employees, faculty, staff, residents, fellows, and students to attend.

All pre-registered, in-person attendees will receive access to the conference, virtual attendee booklet, continental breakfast, lunch, and breaks. Registration also includes access to view the presentations online for one year. Walk-ins are discouraged. Please be sure to register in advance.



LIVE-STREAM (VIRTUAL) ATTENDANCE:

Please register online at <https://upenn.cloud-cme.com/infirmariysymposium2022>. The fee to attend this symposium virtually is \$45 for physicians, industry, nurse practitioners, physician assistants, residents, fellows and all other healthcare professionals, and \$25 for Penn Medicine and CHI St. Vincent employees, faculty, staff, residents, fellows and students.

Registration is required to attend. All pre-registered virtual attendees will receive an email that includes a link with instructions to sign-in and join the virtual conference, 48 hours preceding the symposium, as well as the virtual attendee booklet (downloadable PDF). Registration also includes access to view the presentations online for one year.

Need to Register by Mail?

Please note: mailed registrations can take up to 5-10 business days before they are received. We encourage all attendees to register online. See the registration form for mailing instructions. All registrations will be confirmed by email as long as your registration is received no later than October 28, 2022.

CANCELLATION POLICY

In order to process refunds for course withdrawals, cancellations must be received in writing by October 21, 2022 (subject to a service charge equivalent to 10% of the registration fee, but no less than \$25.00). No refunds will be issued thereafter.

The University reserves the right to cancel or postpone any course due to unforeseen circumstances. In the event of cancellation or postponement, the University will refund registration fees but is not responsible for related costs or expenses to participants, including cancellation fees assessed by hotels, airlines, and travel agencies.

DISCLOSURES

Penn Medicine, Office of Continuing Medical and Interprofessional Education, adheres to the *ACCME Standards for Integrity and Independence in Accredited Continuing Education*. Faculty disclosure information will be made available in the conference materials and syllabi. Faculty members are also expected to disclose to participants any discussions of off-label and/or investigational uses of pharmaceutical products or devices within their presentations.

OVERNIGHT ROOMING ACCOMMODATIONS

A block of rooms is being held at the

Little Rock Marriott

3 Statehouse Plaza, Little Rock, AR 72201

The room rate is \$149.00 for double, queen or king rooms. Taxes are 14.62%. Please highlight and paste this link into your web browser to make your overnight reservation:

<https://www.marriott.com/event-reservations/reservation-link.mi?id=1659979907920&key=GRP&app=resvlink>

If you prefer, you may also call 877-759-6290 and reference the *Penn Medicine and CHI St. Vincent Infirmarium Symposium 2022* room block to receive the discounted room rate.

Parking: Parking at the Little Rock Marriott is \$12 for self-parking and \$18 for valet parking each day. Parking is \$29 for overnight guests. Parking fees are not validated or reimbursed.



FACULTY

COURSE DIRECTOR

Michael Acker, MD

Julian Johnson Professor of Cardiothoracic Surgery
Chief, Division of Cardiovascular Surgery
Director, Penn Medicine Heart and Vascular Center
Penn Medicine
Philadelphia, PA

PROGRAM DIRECTOR

Mary Lou Mayer, RN, BSN*

Associate Director, NIH Grants & NHLBI/CTSN Clinical Trials
Lead Nurse Researcher, Cardiovascular Surgery
Penn Medicine
Philadelphia, PA *Nurse Planner

SPEAKERS

Tracey Andrews, CRNP

Acute Care Nurse Practitioner
Manager, Advanced Practice Providers
Cardiovascular Surgery
Penn Medicine
Philadelphia, PA

Thurston Bauer, MD

Cardiovascular Surgery
CHI St. Vincent Infirmiry
Little Rock, AR

Nimesh Desai, MD, PhD

Associate Professor of Surgery
Director, Thoracic Aortic Surgery
Research Program
Co-Director, Penn Aorta Center
Hospital of the University of Pennsylvania
Penn Medicine
Philadelphia, PA

Kathleen Fenton, MD, MS

Chief, Advanced Technologies and Surgery Branch
Division of Cardiovascular Sciences
National Heart, Lung, and Blood Institute (NHLBI)
Affiliated Scholar, Department of Bioethics
Clinical Center National Institutes of Health
Bethesda, MD

Alexander Iribarne, MD, MS

Assistant Professor of Surgery
Associate Professor of the Dartmouth Institute
Director, Cardiac Surgical Research
Geisel School of Medicine, Dartmouth
Dartmouth, MA

Taisei J. Kobayashi, MD

Assistant Professor of Clinical Medicine
Co-Director of the Coronary Chronic
Total Occlusion Team
Co-Director of the Penn Denervation Center
Leadership Committee of the Pulmonary
Embolism Response Team
Penn Medicine
Philadelphia, PA

Steve Messe, MD

Professor of Neurology
Associate Director Vascular and
Neurology Fellowship
Penn Medicine
Philadelphia, PA

Anjali T. Owens, MD

Associate Professor of Medicine
Medical Director
Center for Inherited Cardiac Disease
Penn Medicine
Philadelphia, PA

Carl Reynolds, MD

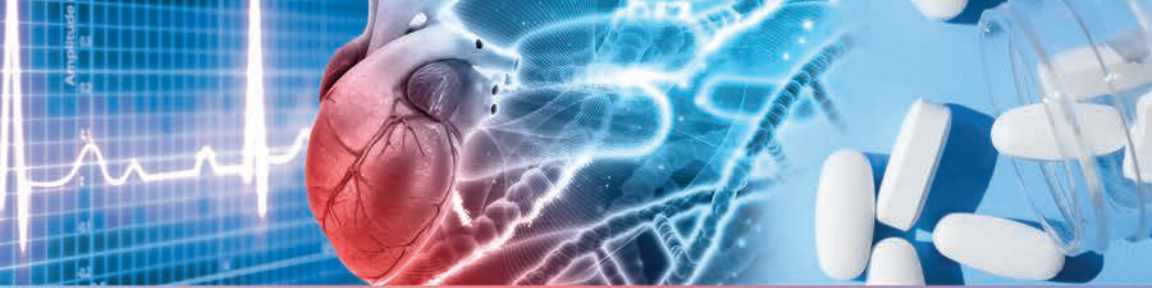
Clinical Assistant Professor of Medicine
Penn Medicine
Philadelphia, PA

Victoria Roth, BA, PBS

Recipient of NIH Grant titled:
Beyond Diversity-Addressing Equity and
Enrollment in a Clinical Trial Network Model
Recipient of NIH Grant Program:
NHLBI Research Supplement to Promote
Diversity in Health-Related Research
Boston, MA

Muhammad Waqas, MD

Director, Advanced Heart Failure Program
Cardiology, Advanced Heart Failure and
Transplantation at the CHI St. Vincent Infirmiry
Little Rock, AR



ADVANCES IN CARDIAC SURGERY, HEART FAILURE AND NHLBI/CTSN CLINICAL TRIALS

AGENDA | SATURDAY, NOVEMBER 5, 2022

7:15 AM – 8:00 AM **In-person Sign-in and Continental Breakfast**
Sign into Virtual Platform

7:45 AM – 8:00 AM **Virtual Attendee Sign-in**
(Broadcast goes live at 8:00 am)

SESSION I

8:00 AM – 8:15 AM **Opening Remarks**
Michael Acker, MD

8:15 AM – 8:45 AM **Keynote Guest Speaker**
Evolution of CTSN, Past, Present and Future
Kathleen Fenton, MD, MS

8:45 AM – 9:15 AM **Advances in Genetic Cardiomyopathy**
Anjali T. Owens, MD

9:15 AM – 9:45 AM **Approach to Functional MR in Patients with Heart Failure**
Michael Acker, MD

9:45 AM – 10:15 AM **Advanced Aortic Valve Disease**
Nimesh Desai, MD

10:15 AM – 10:25 AM **Panel Discussion with Q&A**

10:25 AM – 10:35 AM Break

SESSION II

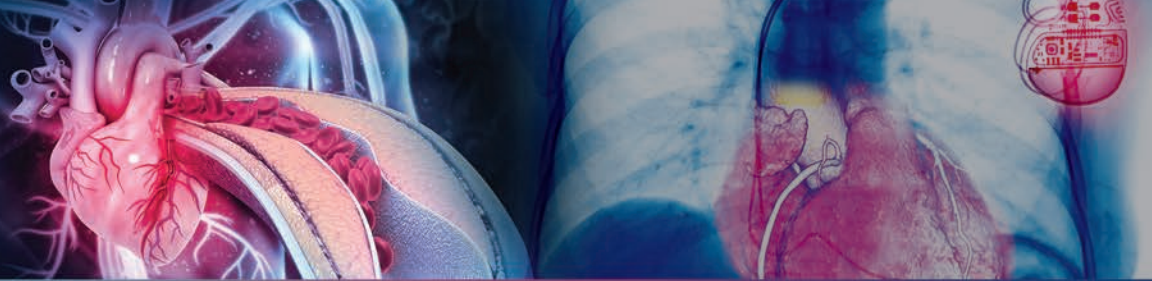
10:35 AM – 11:05 AM **Ischemia-Cutting Edge PCI Techniques**
Taisei J. Kobayashi, MD

11:05 AM – 11:35 AM **Today's VADs, Triggers for Advanced Therapies/VAD Referrals**
Muhammad Waqas, MD

11:35 AM – 12:05 PM **Mechanical Circulatory Support and Cardiogenic Shock**
Thurston Bauer, MD

12:05 PM – 12:15 PM **Panel Discussion with Q&A**

12:15 PM – 1:00 PM Lunch



ADVANCES IN CARDIAC SURGERY, HEART FAILURE AND NHLBI/CTSN CLINICAL TRIALS

SESSION III

- 1:00 PM – 1:30 PM **Advances in the Treatment of Atrial Fibrillation Post Cardiac Surgery/ NHLBI – CTSN PACEs Study**
Carl Reynolds, MD
- 1:30 PM – 2:00 PM **Neuroprotection & Stroke during Cardiac Surgery**
Steve Messe, MD
- 2:00 PM – 2:30 PM **Implementation Science and Mentoring the Next Generation of Investigators**
Alexander Iribarne, MD
- 2:30 PM – 2:40 PM **Panel Discussion with Q&A**
- 2:40 PM – 2:50 PM Break

SESSION IV

- 2:50 PM – 3:20 PM **Opioid Crises Viewing as a Disease**
Tracey Andrews, CRNP
- 3:20 PM – 3:50 PM **Inclusion, Equality and Diversity in Healthcare and Clinical Trials Reshaping How we Think About Marginalization and Systemic Discrimination**
Victoria Roth, BA, PBS
- 3:50 PM – 4:20 PM **NIH CIRSP Program at UPenn**
Nimesh Desai, MD
- 4:20 PM – 4:30 PM **Panel Discussion with Q&A**
- 4:30 PM – 4:40 AM **Closing Remarks**
Michael Acker, MD

SERVICES FOR THE DISABLED If special arrangements are required for an individual with a disability to participate this meeting, please contact the Office of Continuing Medical and Interprofessional Education no later than October 28, 2022, at 215-898-6400.

NONDISCRIMINATION STATEMENT The University of Pennsylvania values diversity and seeks talented students, faculty, and staff from diverse backgrounds. The University of Pennsylvania does not discriminate on the basis of race, sex, sexual orientation, gender identity, religion, color, national or ethnic origin, age, disability, or status as a Vietnam Era Veteran or disabled veteran in the administration of educational policies, programs or activities; admissions policies; scholarship and loan awards; athletic, or other University administered programs or employment. Questions or complaints regarding this policy should be directed to Executive Director, Office of Affirmative Action and Equal Opportunity Programs, 3600 Chestnut Street, Sansom Place East Suite 228, Philadelphia, PA 19104-6106 or 215-898-6993 (Voice) or 215-898-7803 (TDD). www.upenn.edu/affirm-action.

IN-PERSON AND VIRTUAL

PENN MEDICINE AND CHI ST. VINCENT INFIRMARY SYMPOSIUM:
**ADVANCES IN CARDIAC SURGERY, HEART
 FAILURE AND NHLBI/CTSN CLINICAL TRIALS**

SATURDAY, NOVEMBER 5, 2022
8:00 AM – 4:40 PM CDT

We strongly encourage you to register for this conference online by credit card or with a check
<https://upenn.cloud-cme.com/infirmarysymposium2022>

Questions? Contact us at:

penncme@penncme.upenn.edu • Phone: 215-898-6400 or 215-898-8005

Please note we are unable to accept faxed registration forms.

Please print or type

Name (First) _____ (Last) _____

Academic Degree _____

Medical Specialty _____

Affiliation (Hospital, Office, or Company) _____

Address (Affiliation or Home) _____

City _____ State _____ Zip _____

Phone _____ Fax _____

E-mail _____

REGISTRATION FEES

(pre-payment is required to be officially registered)

IN-PERSON ATTENDANCE:

- Physicians and industry employees – \$90
- Nurse practitioners, physician assistants and other healthcare professionals – \$70
- Residents, fellows and students – \$50
- Penn Medicine and CHI St. Vincent employees, faculty, staff, residents, fellows, and students – \$35

LIVE-STREAM (VIRTUAL) ATTENDANCE:

- Physicians and industry employees – \$45
- Nurse practitioners, physician assistants, residents, fellows and all other healthcare professionals – \$45
- Penn Medicine and CHI St. Vincent employees, faculty, staff, residents, fellows, and students – \$25

PAYMENT METHOD

- If you are paying by check or credit card, please register online at
<https://upenn.cloud-cme.com/infirmarysymposium2022>
- If you are paying by check, you may mail your completed registration form and check made payable to **The Trustees of the University of Pennsylvania/CME** to:
 Conference Manager
 Office of Continuing Medical & Interprofessional Education
 Academic Programs, Penn Medicine, JMEC, SPE, 6th floor
 3400 Civic Center Blvd, Bldg. 421
 Philadelphia, PA 19104-5162
- Do not include any credit card information on the registration form or share via email.