

The CME/CNE-accredited symposium, **Advances in Stroke 2020 and Foundations of Neurologic Practice 2020** will be presented Thursday - Saturday, March 26 - 28, 2020 at Biomedical Research Building II/III at Penn Medicine, 421 Curie Boulevard, Philadelphia, PA 19104. Please review the attached exhibitor agreement and agenda.

Exhibit space is available during this event at **\$2,500**. Each exhibitor will receive a standard 8' table. A tablecloth and electric will be provided, if needed. Your company will be acknowledged in the conference materials, on the signage and by the course director(s) during the welcome address. Exhibits will be set-up in the Ballroom foyer. This high-traffic area is designated for breakfast and breaks. We anticipate approximately 200 attendees and speakers. **Please act quickly as space is limited!**

Program Overview and Target Audience

This course is designed as a multi-part educational activity spanning three days, either taken individually or together. Day One, *Advances in Stroke 2020*, reviews the latest in stroke care, including acute treatments as well as secondary prevention and post-stroke care, through a series of interactive, case-based discussions. Days Two and Three, *Foundations of Neurologic Practice 2020: Common Problems in Clinical and Advanced Neurology*, are designed to enhance diagnostic and management skills related to neurologic conditions most frequently encountered in clinical practice. Course topics are designed to simulate patient encounters, as they would occur in clinical practice.

This course has been designed for neurologists, internal medicine and family practice physicians, emergency medicine physicians, cardiologists, radiologists, nurses, nurse practitioners, physician assistants, and other healthcare professionals.

If you are interested in reserving exhibit space, please complete and sign the attached Exhibitor Agreement and return it along with your exhibit fee to:

Crystal Mathis
Academic Programs
Perelman School of Medicine/CME
JMEC, SPE, 6th floor
University of Pennsylvania
3400 Civic Center Blvd, Bldg. 421
Philadelphia, PA 19104-5162
Phone: 215-898-8005/Fax: 215-573-3663
Email: ycry@upenn.edu
<https://upenn.cloud-cme.com/strokeneuro2020>

Exhibitor Agreement

Advances in Stroke 2020/Foundations of Neurology 2020

Thursday - Saturday, March 26-28, 2020

Company Name: _____ ("Exhibitor")

(As it will appear in the syllabus)

of Tables Requested _____ **@ \$2,500.00 each = \$** _____

Please Select the Day(s) You Will Exhibit:

Thursday, March 26th Friday, March 27th Saturday, March 28th

Representative Names (*First 2 representatives allowed on-site complimentary*):

1) _____ 2) _____

Email: _____ Email: _____

Phone: _____ Phone: _____

Fax: _____ Fax: _____

Terms & Conditions

All exhibitors are provided with an 6' table and chairs. Set-up begins on all days at 6:30 am. Expect attendees to arrive by registration (please check the agenda for registration times). If you require additional set-up time, please contact us, and we will assist in any way we can. The exhibit area is secured overnight, however vendors are discouraged to leave any valuable items, such as laptops or phones unattended.

Breakdown of exhibits must be completed by 2:45 pm on Saturday, March 28, 2020.

Display Information

Exhibitors are responsible for supply, set-up, takedown, delivery, and any additional costs of display needs beyond the 8' skirted table. Please let us know what your needs are so that we can accommodate your display:

Will you be bringing your own tablecloth? Yes No

Will you need electricity for your display? Yes No

Will you bring your own extension cord? Yes No

What type of equipment is being displayed (lights, machines, etc.)? _____

What is the Voltage/AMPs? _____

How many pieces of equipment need electricity? _____

Do any machines require any special outlets for operation? Name outlet type: _____

What additional information regarding your exhibit should we know? _____

Advances in Stroke 2020/Foundations of Neurologic Practice 2020
Thursday-Saturday, March 26-28, 2020

Meeting Location & Display Details

Advances in Stroke 2020/Foundations of Neurologic Practice 2020 will be held Thursday-Saturday, March 26-28, 2020 in the Biomedical Research Building (BRB) II/III Auditorium at Penn Medicine, University of Pennsylvania, 421 Curie Boulevard, Philadelphia, PA 19104. Information on parking and additional details will be forwarded closer to the conference.

Continental breakfast, lunch and breaks will be set-up among the exhibits in the foyer. Each exhibitor can expect to receive one 6' skirted table and two chairs. Please be sure your exhibit materials fit within the specs of 6'x8'. If needed, you are welcome to purchase additional tables.

Overnight Accommodation Options

A block of rooms has been reserved at the Sheraton University City Hotel, 3600 Chestnut Street, Philadelphia, PA 19104. There is a special group rate of \$219 per night (single or double occupancy). Taxes are 16.36% per room per night and are subject to change. A credit card is required to hold the reservation. Hotel check-in is at 3 pm, check-out is at noon.

Please visit <https://www.marriott.com/event-reservations/reservationlink.mi?id=1579102782286&key=GRP&app=resvlink> or call 215-387-8000 to make your reservation. The deadline for reservations is February 25, 2020. The Sheraton has an attached parking garage and offers self-parking for \$20-\$26 for daily or \$35 for overnight guests. Parking costs are not validated or reimbursed. This hotel is a 5-10 minute walk to/from BRB II/III.

Additional overnight options can be found in the brochure.

Shipping Information

(Please label all boxes with the following information)

BRB II/III
421 Curie Blvd
Philadelphia, PA 19104
Attention: Ansheai Spence-Jones
215-898-6189

HOLD FOR BRB II/III AUDITORIUM
Ansheai Spence-Jones
CONFERENCE: **Stroke/Neurologic Practice 2020**
Thursday-Saturday, March 26-28, 2020

[YOUR COMPANY] ♦ [REPRESENTATIVE'S NAME]
Package # _____ of _____

**Please do not ship any materials to arrive at the venue before
Wednesday, March 25, 2020**

Advances in Stroke 2020/Foundations of Neurologic Practice 2020
Thursday-Saturday, March 26-28, 2020

Attendee Registration

If you would like to attend any or all of the sessions during Advances in Stroke 2020/Foundations of Neurologic Practice 2020, you must register and submit the registration fee. Please visit <https://upenn.cloud-cme.com/strokeneuro2020> for registration and additional conference information.

Payment Methods (check the one that applies):

Check

Make your check payable to the **Trustees of the University of Pennsylvania/CME** and return it with the completed exhibit agreement to the address below (Our Tax ID number is 23-1352685):

Crystal Mathis
Academic Programs
Perelman School of Medicine/CME
JMEC, SPE, 6th floor
University of Pennsylvania
3400 Civic Center Blvd, Bldg. 421
Philadelphia, PA 19104-5162

Credit Card (**DO NOT INCLUDE CREDIT CARD INFORMATION ON THIS FORM**)

If paying by Credit Card, you may fax or email this completed form.
Fax: 215-573-3663 or Email: ycry@upenn.edu
You will then be contacted by Crystal Mathis to complete the transaction.

Contact Person: _____

Phone: _____

E-Mail: _____

Questions: [Elizabeth Butler](#): 215-898-6126 or [Crystal Mathis](#) or 215-573-3663

A wire transfer is also available for payment

Please contact Crystal Mathis at ycry@upenn.edu for further instructions

Terms & Conditions

Educational activities in the exhibit area which appear to compete with the scientific program and present research results that are being presented concurrently in the scientific program are prohibited. This includes, but is not limited to, displaying posters or other promotional materials summarizing research results, promoting meeting faculty, or distributing meeting materials such as syllabi, handouts, slides, or invitations.

The only activities which may be appropriate in exhibits are for the purpose of informing meeting participants about an organization and its products and services.

The distribution (either for free or for sale) of educational enduring materials on-site that award CME credit, including but not limited to full-text reprints or copies of articles or journal self-study programs, audiotapes, videotapes, or CD ROMs, is prohibited.

Exhibitor assumes entire responsibility for all claims, losses, costs, expenses, and damages to persons or property, as well as governmental charges or fines and attorney's fees arising out of or caused by Exhibitor's installation, removal, maintenance, occupancy, or use of the exhibition premises or a part thereof.

In addition, Exhibitor does not hold the meeting venue or the University of Pennsylvania responsible for maintaining insurance to cover Exhibitor's property.

By signing below, you agree to the terms and conditions of this agreement.

Authorized Exhibitor Representative

Date



Penn Medicine

Continuing Medical and
Interprofessional Education

The Department of Neurology at Penn Medicine
Presents

Advances in Stroke 2020

Thursday, March 26, 2020

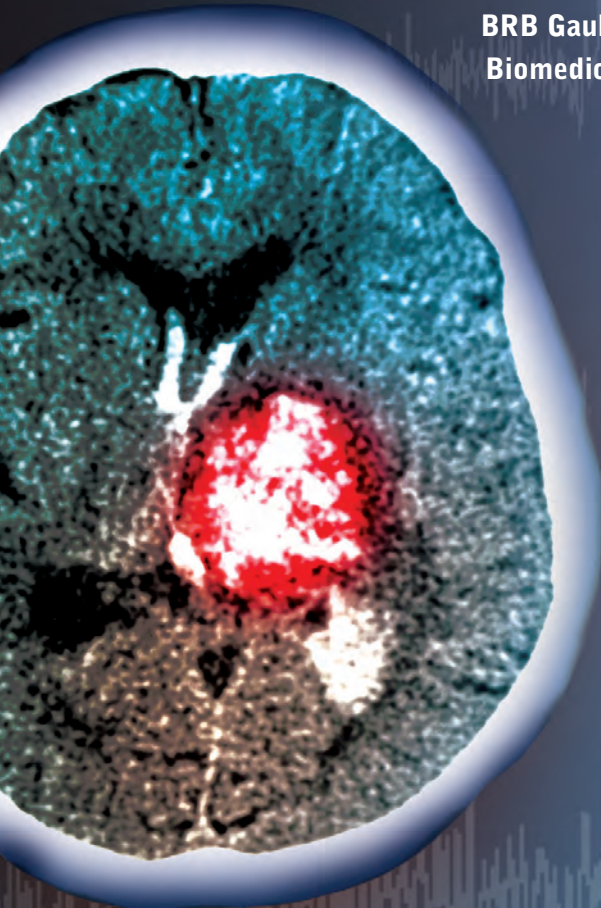
and

Foundations of Neurologic Practice 2020

Friday-Saturday, March 27-28, 2020

A CME/CNE-ACCREDITED COURSE

**BRB Gaulton Auditorium and Lobby
Biomedical Research Building II/III
at Penn Medicine
421 Curie Boulevard
Philadelphia, PA 19104**



<https://upenn.cloud-cme.com/strokeneuro2020>

Learning Objectives Day 2 and 3

Foundations of Neurologic Practice 2020

Day 2

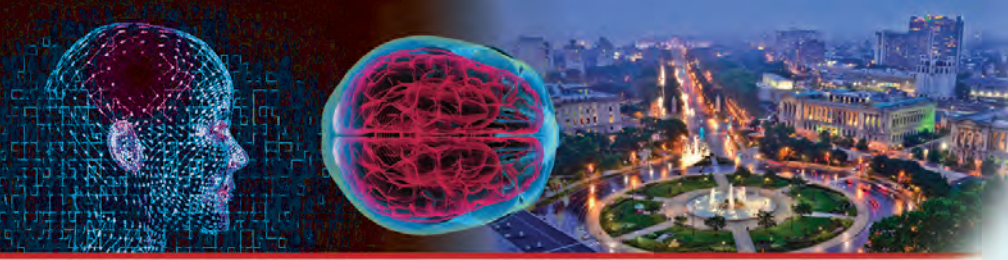
Upon completion of the activity, participants should be able to:

- Confidently perform a detailed neuromuscular examination and efficiently record findings in the electronic medical record
- Identify patterns of aging nervous system function and answer questions about mitigating cognitive decline by physical, dietary, and mental exercise
- Perform head-thrust and Dix-Hallpike maneuvers and distinguish causes of acute vestibular syndrome
- Explain uses and adverse effects of new anti-epileptic drugs with particular consideration of women's issues
- Approach a patient with medically unexplained physical symptoms with sensitive and effective strategies to mitigate symptoms
- Perform a cost-effective workup of polyneuropathy
- Identify headache patterns requiring specific approaches such as the Cefaly device, botulinum toxin, CGRP antagonists
- Discuss common movement disorders
- Identify neuro-ophthalmologic emergencies such as optic neuritis and idiopathic intracranial hypertension
- Choose appropriate pharmacotherapy for neurogenic bladder
- Identify barriers to neurologic care and disparities in neurologic disease management
- Acquire evidence base to answer common patient questions about cannabis, Lyme disease, vitamin D and other supplement use, gadolinium use in MRI

Day 3

Upon completion of the activity, participants should be able to:

- Describe the recent evidence regarding the association between traumatic brain injury and neurodegeneration
- Review current treatment options for Parkinson's disease and review future directions of potential therapeutic interventions
- Discuss recent advances in deep brain stimulation technology and epilepsy treatment
- Describe the spectrum of clinical presentations of mitochondrial neurologic disease
- Identify recent therapeutic advances in motor neuron disease, multiple sclerosis, and Alzheimer's dementia
- Describe conditions that mimic myositis



Hosting Department

Advances in Stroke 2020 and *Foundations of Neurologic Practice 2020: Common Problems in Clinical Neurology* and *Advanced Neurology* is hosted by the Department of Neurology, Perelman School of Medicine at the University of Pennsylvania.

Accreditation



In support of improving patient care, Penn Medicine is jointly accredited by the Accreditation Council for Continuing Medical Education (ACCME), the Accreditation Council for Pharmacy Education (ACPE), and the American Nurses Credentialing Center (ANCC), to provide continuing education for the healthcare team.

Designation of Credit

Physicians: Penn Medicine designates this live activity for a maximum of 21.0 *AMA PRA Category 1 Credits*[™]. Physicians should claim only the credit commensurate with the extent of their participation in the activity.

Day 1 Advances in Stroke 2020 – 7.25 AMA PRA Category 1 Credits[™]

Day 2 Foundations of Neurologic Practice 2020, Common Problems in Clinical Neurology – 8.5 AMA PRA Category 1 Credits[™]

Day 3 Foundations of Neurologic Practice 2020, Advanced Neurology – 5.0 AMA PRA Category 1 Credits[™]

Nurses: This program provides 21.0 contact hours.

Day 1 Advances in Stroke 2020 – 6.75 contact hours

Optional Session: Stroke Center Certification – 0.5 contact hours

Day 2 Foundations of Neurologic Practice 2020, Common Problems in Clinical Neurology – 8.0 contact hours

Optional Early Session: Physical Examination Practice Sessions – 0.5 contact hours

Day 3 Foundations of Neurologic Practice 2020, Advanced Neurology – 5.0 contact hours

Physician Assistants: AAPA accepts certificates of participation for educational activities certified for *AMA PRA Category 1 Credit*[™] from organizations accredited by ACCME or a recognized state medical society. PAs may receive a maximum of 21.0 Category 1 credits for completing this activity.

Certificates and Transcripts: After the conference has concluded, all participants will receive a follow-up email with instructions and a link. Once participants submit the request for credit, the earned credits will be available for viewing on a transcript and certificates will be available for printing at <https://upenn.cloud-cme.com>. Please note that the individual certificate will not be mailed.

Disclosures

Penn Medicine, Office of Continuing Medical and Interprofessional Education, adheres to the *ACCME Standards for Commercial Support*. Faculty disclosure information will be made available in the conference materials and syllabi. Faculty members are also expected to disclose to participants any discussions of off-label and/or investigational uses of pharmaceutical products or devices within their presentations.

Registration Fees

The registration fees for *Advances in Stroke 2020* and *Foundations of Neurologic Practice 2020* (Thursday, Friday and Saturday attendance) are \$550 for Physicians and Industry personnel, \$350 for Nurses and Healthcare Professionals and \$200 for Residents and Fellows.

The registration fees for any combination of two days (Thursday, Friday and/or Saturday) are \$400 for Physicians and Industry personnel, \$250 for Nurses and Healthcare Professionals or \$125 for Residents and Fellows.

The registration fees for single-day attendance (Thursday, Friday or Saturday) are \$250 for Physicians and Industry personnel, \$150 for Nurses and Healthcare Professionals or \$75 for Residents and Fellows.

Penn Medicine employees, faculty and Staff: You may register at 50% off of the listed registration fees. In order to register at the reduced rate, you must sign into your <https://upenn.cloud-cme.com> account with your Pennkey and Password and register online using PENNSTROKE. The reduced rate is only available to Penn Medicine employees.

The registration fee includes attendance to the conference (on the day(s) you register to attend). Each attendee will also receive a course booklet, a link to view the presentations online, continental breakfast, mid-morning & afternoon refreshment breaks and lunch.

If you are registering with a credit card or check, please register online at <https://upenn.cloud-cme.com/strokeneuro2020>. We cannot accept faxed or mailed registration forms with credit card information. To pay by check, complete your registration online and mail a copy of your confirmation email with your check. See the registration form for mailing information. Please note: mailed registrations can take up to 5-10 business days before they are received. All registrations will be confirmed by email as long as your registration is received no later than March 24, 2020.

Cancellation and Refund Policy

In order to process refunds for course withdrawals, cancellations must be received in writing by March 12, 2020 (subject to a service charge of 10% of the registration fee but not less than \$15.00). No refunds will be issued after March 12, 2020.

The University reserves the right to cancel or postpone any course due to unforeseen circumstances. In the event of cancellation or postponement, the University will refund registration fees but is not responsible for related costs or expenses to participants, including cancellation fees assessed by hotels, airlines, and travel agencies.

Meeting Location

Advances in Stroke 2020 and *Foundations of Neurologic Practice 2020* will be held Thursday – Saturday, March 26-28, 2020 at the BRB II/III Gaulton Auditorium and Lobby of the Biomedical Research Building II/III (BRB II/III) at Penn Medicine, 421 Curie Boulevard, Philadelphia, PA 19104

Directions & Parking: The Biomedical Research Building (BRB II/III) is located on PENN's campus across from the Stellar-Chance Laboratory Building (an enclosed walkway connects the two) and next to the Clinical Research Building (CRB).

On Thursday and Friday, March 26-27, the 3600 Civic Center Blvd Parking Garage is open for public parking. This garage is accessible from Civic Center Boulevard and is located at Civic Center Blvd and West Service Drive (next to the Colket Research Center).

The BRB II/III is about a 5 minute walk from this parking garage. Parking is about \$20 per day. This garage is only open Monday – Friday. It is closed on weekends.

On Saturday, March 28th, LOT #44 Parking Garage (located right next to the BRB II/III) is open to those attending. The conference will validate the parking fees on Saturday ONLY and only in LOT #44. Parking fees on Thursday and Friday will not be validated or reimbursed.

Overnight Accommodation Options

A block of rooms has been reserved at the Sheraton University City Hotel, 3600 Chestnut Street, Philadelphia, PA 19104. There is a special group rate of \$219 per night (single or double occupancy). Taxes are 16.36% per room per night and are subject to change. A credit card is required to hold the reservation. Hotel check-in is at 3 pm, check-out is at noon.

Please visit <https://www.marriott.com/event-reservations/reservation-link.mi?id=1579102782286&key=GRP&app=resvlink> or call 215-387-8000 to make your reservation. The deadline for reservations is February 25, 2020.

The Sheraton has an attached parking garage and offers self-parking for \$20-\$26 for daily or \$35 for overnight guests. Parking costs are not validated or reimbursed. This hotel is a 5-10 minute walk to/from BRB II/III.

Additional Overnight Accommodation Options:

There are no special room rates for course participants at other properties. Contact the following hotels directly if you are interested in overnight room reservations:

The Study at University City Hotel
20 South 33rd Street, Philadelphia, PA 19104
215-387-1400
<https://www.thestudyatuniversitycity.com>

The Inn at Penn
3600 Sansom Street
Philadelphia, PA 19104
215-222-0200
www.theinnatpenn.com

Homewood Suites by Hilton
4109 Walnut Street, Philadelphia, PA, 19104
215-382-1111
www.HomewoodUnivCity.com

*Homewood Suites offers a complimentary shuttle service to Penn's campus



Advances in Stroke 2020

All faculty are from Penn Medicine, Philadelphia, PA

COURSE CO-DIRECTORS

Brett Cucchiara, MD
Associate Professor of Neurology

Laura Stein, MD
Assistant Professor of Neurology

FACULTY

Donna Kurowski George, MD
Assistant Professor of Neurology

Robert Hurst, MD
Professor of Radiology

Roy Hamilton, MD
Assistant Professor of Neurology

Scott E. Kasner, MD
Professor of Neurology

David Kung, MD
Assistant Professor of Neurosurgery

Jeanie Luciano, RN, CRNP
Coordinator
Penn Comprehensive Stroke Center

Michael Mullen, MD
Assistant Professor of Neurology

Pasquale Santangeli, MD, PhD
Assistant Professor of Medicine –
Cardiology

Daniel Soffer, MD, FNLA
Clinical Associate Professor of Medicine

Kristy Yuan, MD
Professor of Neurology

Services for the Disabled If special arrangements are required for an individual with a disability to attend this meeting, please contact the Office of Continuing Medical and Interprofessional Education no later than March 12, 2020 at 215-898-8005.

Nondiscrimination Statement The University of Pennsylvania values diversity and seeks talented students, faculty, and staff from diverse backgrounds. The University of Pennsylvania does not discriminate on the basis of race, sex, sexual orientation, gender identity, religion, color, national or ethnic origin, age, disability, or status as a Vietnam Era Veteran or disabled veteran in the administration of educational policies, programs or activities; admissions policies; scholarship and loan awards; athletic, or other University administered programs or employment. Questions or complaints regarding this policy should be directed to Executive Director, Office of Affirmative Action and Equal Opportunity Programs, 3600 Chestnut Street, Sansom Place East, Suite 228, Philadelphia PA 19104-6106 or 215-898-6993 (Voice) or 215- 898-7803 (TDD). www.upenn.edu/affirm-action



AGENDA

DAY 1 | Thursday, March 26, 2020

ADVANCES IN STROKE 2020

7:30-8:15 AM Registration and Continental Breakfast

8:15-8:30 AM Welcome and Introduction
Brett Cucchiara, MD

ACUTE STROKE THERAPY

8:30-9:00 AM Acute Stroke Therapy – The Essentials

- Basics of acute stroke supportive care
- Intravenous thrombolysis
 - Minor strokes – treat or not?
 - Should we treat after 4.5 hours using imaging selection?
 - New thrombolytic agents

Donna Kurowski George, MD

9:00-9:30 AM Mechanical Thrombectomy – The Mechanics
Robert Hurst, MD

9:30-10:00 AM Mechanical Thrombectomy – The Evidence
Scott Kasner, MD

10:00-10:30 AM Acute Transient Ischemic Attack

- Risk stratification
- Practice-changing impact of the POINT, CHANCE and SOCRATES trials

Brett Cucchiara, MD

10:30-10:45 AM Break

10:45-11:05 AM Stroke Systems of Care – Patients, Policy and Public Health

- Stroke units
- Regionalization and geographic modeling of stroke care

Michael Mullen, MD

11:05 AM-12:00 PM Decision-making in Acute Stroke – Case Studies
Moderator: *Brett Cucchiara, MD*
Panelists: *Donna Kurowski George, MD, Robert Hurst, MD, Scott Kasner, MD, Michael Mullen, MD*

12:00-1:00 PM Lunch

1:00-1:30 PM Anticoagulation-associated Intracerebral Hemorrhage

- Reversal of warfarin and direct oral anticoagulants
- Restarting anticoagulation in high-risk patients

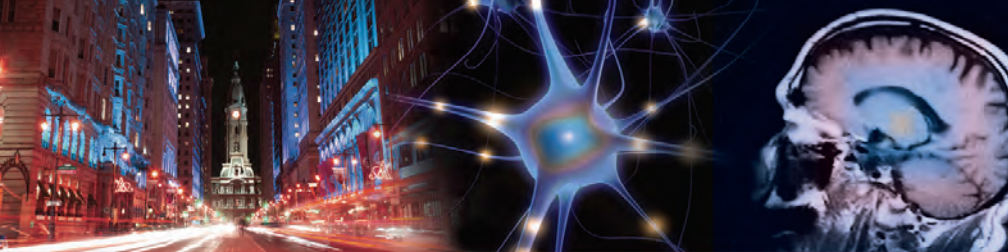
Kristy Yuan, MD

STROKE RECOVERY

- 1:30-2:00 PM Identifying and Managing Post-stroke Depression, Anxiety and Fatigue
Laura Stein, MD
- 2:00-2:30 PM Non-invasive Neuromodulation to Treat Post-stroke Aphasia
Roy Hamilton, MD
- 2:30-2:45 PM Break

STROKE PREVENTION

- 2:45-3:15 PM Management of Asymptomatic Cerebral Aneurysms
David Kung, MD
- 3:15-3:45 PM Finding and Treating Atrial Fibrillation (AF)
 - Apple watch for AF detection – revolutionary advance or disaster in the making?
 - Mobile cardiac outpatient telemetry
 - How much AF is important
 - Non-pharmacologic treatment of AF
 - LAA occlusion devices
 - Ablation – CABANA*Pasquale Santangeli, MD*
- 3:45-4:15 PM Lipids and Stroke – New Evidence, New Treatment Strategies
 - Lipids and lipoproteins
 - Statins and beyond for stroke prevention, including emerging therapies (PCSK9 inhibitors, icosapent)*Daniel Soffer, MD*
- 4:15-4:30 PM Question and Answer Panel Discussion
Moderator: Brett Cucchiara, MD
Panelists: Scott Kasner, MD, Daniel Soffer, MD and Laura Stein, MD
- 4:30 PM Adjourn
- 4:30-5:00 PM **OPTIONAL SESSION: Stroke Center Certification**
Jeanie Luciano, RN, CRNP



Foundations of Neurologic Practice 2020

All faculty are from Penn Medicine, Philadelphia, PA

COURSE CO-DIRECTORS

Andres Deik, MD, MEd
Assistant Professor of Clinical Neurology
Director of Experimental Therapeutics,
Parkinson's Disease and Movement
Disorders Center

Amy Pruitt, MD
Professor of Neurology
Vice Chair for Education
Department of Neurology

FACULTY

Geoffrey Aguirre, MD, PhD
Associate Professor of Neurology

Danielle Becker MD, MS
Assistant Professor of Clinical Neurology

Ramon Diaz-Arrastia, MD, PhD
Professor of Neurology

Christyn Edmundson, MD
Assistant Professor of Clinical Neurology

Lauren Elman, MD
Associate Professor of Neurology

Amy Goldstein, MD
Associate Professor of Clinical Pediatrics

Katherine Hamilton, MD
Assistant Professor of Neurology

Ingo Helbig, MD
Assistant Professor of Neurology

David Irwin, MD
Assistant Professor of Neurology

Dina Jacobs MD
Associate Professor of Neurology

Sharon Lewis, MD
Associate Professor of Clinical Neurology

Grant Liu, MD
Professor of Neurology and Ophthalmology

Christopher Perrone, MD
Assistant Professor of Neurology

Colin Quinn, MD
Assistant Professor of Clinical Neurology

Raymond Price, MD
Associate Professor of Clinical Neurology

Andrew Siderowf, MD
Professor of Neurology

Meredith Spindler, MD
Assistant Professor of Clinical Neurology

PHYSICAL EXAMINATION FACILITATORS

Alisha Amendt, RN, CRNP
Nurse Practitioner
General Neurology Division

Danielle Becker, MD, MS
Assistant Professor of Clinical Neurology

Maria Chen, MD, PhD
Assistant Professor of Clinical Neurology

Erin Ingala, MD
Clinical Assistant Professor of Neurology

Sami Khella, MD
Professor of Clinical Neurology
Site Chief, Penn Presbyterian
Medical Center

Sharon Lewis, MD
Assistant Professor of Clinical Neurology

Michael Rubenstein, MD
Associate Professor of Clinical Neurology

Meredith Spindler, MD
Assistant Professor of Clinical Neurology

Eliot Wallack, MD
Associate Professor of Clinical Neurology



AGENDA

DAY 2 | Friday, March 27, 2020

FOUNDATIONS OF NEUROLOGIC PRACTICE 2020

- 7:00-8:15 AM **OPTIONAL SESSION:** Physical Examination Practice Sessions
- 7:30-8:15 AM Registration and Continental Breakfast

COMMON PROBLEMS IN CLINICAL NEUROLOGY

- 8:15-8:30 AM Welcome and Introduction to the Course:
Essential Neurologic Skills
Amy Pruitt, MD
- 8:30-9:15 AM **The Spin Doctor: Dizziness**
Raymond Price, MD
- 9:15-10:00 AM **Advances in Migraine Therapy**
Katherine Hamilton, MD
- 10:00-10:15 AM Break
- 10:15-11:00 AM **Providing Neurologic Care for Women:
Epilepsy and Multiple Sclerosis**
Danielle Becker, MD and Dina Jacobs, MD
- 11:00-11:40 AM **The Aging Nervous System**
Geoffrey Aguirre, MD
- 11:40 AM-12:15 PM **Peripheral Neuropathy**
Christyn Edmundson, MD
- 12:15-1:15 PM Lunch
**Feel free to bring your topics to the CME desk for the panel discussion at the end of the day*
- 1:15-2:00 PM **Movement Disorders You Need to Recognize**
Meredith Spindler, MD
- 2:00-2:45 PM **Neuro-Ophthalmologic Diagnoses You Don't Want To Miss**
Grant Liu, MD
- 2:45-3:20 PM **Medically Unexplained Physical Symptoms**
Amy Pruitt, MD
- 3:20-3:50 PM **Health Disparities in Neurology**
Sharon Lewis, MD
- 3:50-4:00 PM Break
- 4:00-5:00 PM **Panel Discussion: Questions Your Patients Will Ask –
A Series of Mini-Cases: Cannabis, Lyme, Vitamin D,
Gadolinium MRI Use, Neurogenic Bladder**
Moderator: Amy Pruitt, MD
*Panelists: Christyn Edmundson, MD, Grant Liu, MD
and Raymond Price, MD*
- 5:00 PM Closing Remarks and Adjourn



DAY 3 | Saturday, March 28, 2020

FOUNDATIONS OF NEUROLOGIC PRACTICE 2020

- 8:00-8:25 AM Registration and Continental Breakfast
- 8:25-8:30 AM Welcome
Andres Deik, MD
- 8:30-9:00 AM Traumatic Brain Injury and Neurodegenerative Disease –
What Does the Evidence Show?
Ramon Diaz-Arrastia, MD, PhD

Neurogenetics

- 9:00-9:30 AM Precision Medicine in Epilepsy
Ingo Helbig, MD
- 9:30-10:00 AM Updates in Mitochondrial Neurologic Diseases
Amy Goldstein, MD
- 10:00-10:30 AM Break

Movement Disorders

- 10:30-11:00 AM Recent Advances in Symptomatic Therapy of Parkinson's Disease
Meredith Spindler, MD
- 11:00-11:30 AM Emerging Therapies for Movement Disorders
Andrew Siderowf, MD
- 11:30 AM-12:00 PM The Future of Deep Brain Stimulation Surgery
Andres Deik, MD, MEd
- 12:00-1:00 PM Lunch

Neuromuscular Diseases

- 1:00-1:30 PM Disease Modifying Therapy in Motor Neuron Disease
Lauren Elman, MD
- 1:30-2:00 PM Myositis Mimics
Colin Quinn, MD
- 2:00-2:15 PM Break

Other Specialties

- 2:15-2:45 PM Dementia: Monoclonal Antibody Therapy for AD: An Update
David Irwin, MD
- 2:45-3:15 PM Demyelinating Disease:
Advancement in the Monitoring and Treatment of MS
Christopher Perrone, MD
- 3:15 PM Closing Remarks and Adjourn

Advances in Stroke 2020

Thursday, March 26, 2020

Foundations of Neurologic Practice 2020

Friday-Saturday, March 27-28, 2020

You may register by credit card or check online at:

<https://upenn.cloud-cme.com/strokeneuro2020>

Questions? Contact us at:

Phone: 215-898-6400 or 215-898-8005 • penncme@penncme.upenn.edu

Please note we are unable to accept faxed or mailed registration forms with credit card payment.

Please print or type

Name (First) _____ (Last) _____

Academic Degree _____

Medical Specialty _____

Affiliation (Hospital, Office, or Company) _____

Address (Affiliation or Home) _____

City _____ State _____ Zip _____

Phone _____ Fax _____

E-mail _____

Registration Fees (pre-payment is required to be officially registered)

- Advances in Stroke* (Thursday)
- Common Problems in Clinical Neurology* (Friday)
- Advanced Neurology* (Saturday)

Advances in Stroke and Foundations of Neurologic Practice
(Thursday, Friday and Saturday attendance)

- \$550 for Physicians and Industry personnel
- \$350 for Nurses and Other Healthcare Professionals
- \$200 for Residents and Fellows

Registration fees for any combination of two days (Thursday, Friday and/or Saturday)

- \$400 for Physicians and Industry personnel
- \$250 for Nurses and Other Healthcare Professionals
- \$125 for Residents and Fellows

Registration fees for single-day attendance (Thursday, Friday or Saturday)

- \$250 for Physicians and Industry personnel
- \$150 for Nurses and Other Healthcare Professionals
- \$75 for Residents and Fellows (per day)

Check the complimentary optional sessions you plan to attend:

- OPTIONAL SESSION: *Joint Commission Stroke Center Certification* (Thursday)
- OPTIONAL EARLY SESSION: *Practice Your Examination Skills* (Friday)

Penn Medicine employees, faculty and staff will receive 50% off of the registration rates when registering online with discount code PENNSTROKE.

Payment Method

- If you are paying by credit card, please register online at <https://upenn.cloud-cme.com/strokeneuro2020>
- If you are paying by check, you may mail your completed registration form and check made payable to **The Trustees of the University of Pennsylvania/CME** to:
Conference Manager, Office of Continuing Medical & Interprofessional Education
Academic Programs, Penn Medicine, JMEC, SPE, 6th floor
3400 Civic Center Blvd, Bldg. 421, Philadelphia, PA 19104-5162
- Do not include any credit card information on the registration form or email any credit card information

Please Note: Walk-in registrants must bring payment to the program.
Seating may be limited for walk-in registrants.



Office of Continuing Medical & Interprofessional Education
Academic Programs, Penn Medicine
JMEC, SPE, 6th floor, 3400 Civic Center Blvd, Bldg. 421
Philadelphia, PA 19104-5162



Advances in Stroke 2020
and
Foundations of Neurologic Practice 2020
March 26 – 28, 2020

A CME/CNE-ACCREDITED COURSE

BRB Gaulton Auditorium and Lobby
Biomedical Research Building II/III
at Penn Medicine
421 Curie Boulevard
Philadelphia, PA 19104

Non-Profit Org.
U.S. Postage
PAID
Permit No.
2563