

The CME/CE-accredited symposium, **Penn Pancreatic Care Symposium Pancreas in 2020: From Benign to Malignant** will be presented Friday, April 24, 2020 at the BRB Gaulton Auditorium and Lobby, Biomedical Research Building II/III at Penn Medicine, 421 Curie Boulevard, Philadelphia, PA 19104. Please review the attached exhibitor agreement and agenda.

Exhibit space is available during this event at **\$1,500**. Each exhibitor will receive a standard 8' table. A tablecloth and electric will be provided, if needed. Your company will be acknowledged in the conference materials, on the signage and by the course director(s) during the welcome address. Exhibits will be set-up in the lobby. This high-traffic area is designated for breakfast and breaks. We anticipate approximately 100 attendees and speakers. **Please act quickly as space is limited!**

### **Program Overview and Target Audience**

The course will bring clinical experts from the University of Pennsylvania and other leading institutions together to discuss the latest advances and clinical trial results pertaining to: (1) Pancreatic Ductal Adenocarcinoma (PDAC); (2) Pancreatic Cysts; (3) Pancreatic Neuroendocrine Tumors (PNET); and (4) Pancreatitis. The course format will include a series of short talks in each session followed by case-based panel discussions involving audience interaction.

This conference is designed for physicians and healthcare professionals practicing in the following areas of Gastroenterology: Surgeons, Oncologists, Radiologists, Practicing GI physicians, nurses, nurse practitioners, physician assistants, fellows, residents and medical students.

If you are interested in reserving exhibit space, please complete and sign the attached Exhibitor Agreement and return it along with your exhibit fee to:

Crystal Mathis  
Academic Programs  
Perelman School of Medicine/CME  
JMEC, SPE, 6th floor  
University of Pennsylvania  
3400 Civic Center Blvd, Bldg. 421  
Philadelphia, PA 19104-5162  
Phone: 215-898-8005/Fax: 215-573-3663  
Email: [ycry@upenn.edu](mailto:ycry@upenn.edu)  
<https://upenn.cloud-cme.com/pancreaticcare2020>

**Exhibitor Agreement**

*Penn Pancreatic Care Symposium*  
*Pancreas in 2020: From Benign to Malignant*  
Friday, April 24, 2020

Company Name: \_\_\_\_\_ ("Exhibitor")

**(As it will appear in the syllabus)**

**Exhibit Fee: \$1,500.00 per Tabletop Exhibit**

**# of Tables Requested** \_\_\_\_\_ **@ \$1,500.00 each = \$** \_\_\_\_\_

Representative Names (*only 2 representatives will be allowed on-site*):

1) \_\_\_\_\_ 2) \_\_\_\_\_

Email: \_\_\_\_\_ Email: \_\_\_\_\_

Phone: \_\_\_\_\_ Phone: \_\_\_\_\_

Fax: \_\_\_\_\_ Fax: \_\_\_\_\_

**Terms & Conditions**

All exhibitors are provided with an 8' table and chairs. Set-up begins on Friday, April 24, 2020 at 6:00 am. If you require additional set-up time, please contact us, and we will assist in any way we can. Exhibitors should expect participants to begin arriving at 7:00 am. Although the exhibit area is secured, vendors are discouraged to leave any valuable items, such as laptops or phones unattended.

Breakdown of exhibits must be completed by 5:00 pm.

**Display Information**

Exhibitors are responsible for supply, set-up, takedown, delivery, and any additional costs of display needs beyond the 8' skirted table. Please let us know what your needs are so that we can accommodate your display:

Will you be bringing your own tablecloth?  Yes  No

Will you need electricity for your display?  Yes  No

Will you bring your own extension cord?  Yes  No

What type of equipment is being displayed (lights, machines, etc.)? \_\_\_\_\_

How many pieces of equipment need electricity? \_\_\_\_\_

Do any machines require any special outlets for operation? Name outlet type: \_\_\_\_\_

What additional information regarding your exhibit should we know? \_\_\_\_\_

*Pancreas in 2020: From Benign to Malignant*  
Friday, April 24, 2020

**Meeting Location & Display Details**

Penn Pancreatic Care Symposium Pancreas in 2020: From Benign to Malignant will be held Friday, April 24, 2020, in the BRB Gaulton Auditorium and Lobby, Biomedical Research Building II/III at Penn Medicine, 421 Curie Boulevard, Philadelphia, PA 19104.

**Tables will not be designated.** Continental breakfast and breaks will be set-up among the exhibits in the foyer. Each exhibitor can expect to receive one 8' skirted table and two chairs. Please be sure your exhibit materials fit within the specs of 8'x8'. If needed, you are welcome to purchase additional booth space.

**Overnight Information**

There are no special room rates for the course. Please contact the following hotels directly if you are interested in overnight accommodations.

<p><b>The Study at University City Hotel</b> 20 South 33rd Street Philadelphia, PA 19104 215-387-1400 <a href="https://www.thestudyatuniversitycity.com/">https://www.thestudyatuniversitycity.com/</a></p>	<p><b>Homewood Suites by Hilton</b> 4109 Walnut Street Philadelphia, PA 19104 215-382-1111 <a href="http://www.HomewoodUnivCity.com">www.HomewoodUnivCity.com</a> <i>*Homewood Suites offers a complimentary shuttle service</i></p>
<p><b>Sheraton University City Hotel</b> 3600 Chestnut Street Philadelphia, PA 19104 215-387-8000 <a href="http://www.sheraton.com/universitycity">www.sheraton.com/universitycity</a></p>	<p><b>The Inn at Penn</b> 3600 Sansom Street Philadelphia, PA 19104 215-222-0200 <a href="http://www.theinnatpenn.com">www.theinnatpenn.com</a></p>

**Shipping Information**

*(Please label all boxes with the following information)*

Biomedical Research Building II/III  
421 Curie Boulevard  
Philadelphia, PA 19104  
Attention: Willie Williams /Ansheai Spence-Jones  
215-573-7694

HOLD FOR BRB II/III at Penn Medicine  
Ansheai Spence-Jones/Willie Williams  
Penn Pancreatic Care Symposium  
Friday, April 24, 2020

[YOUR COMPANY] ♦ [REPRESENTATIVE'S NAME]  
Package # \_\_\_\_\_ of \_\_\_\_\_

**Please do not ship any materials to the venue before Thursday, April 23, 2020**

---

**Attendee Registration**

If you would like to attend any or all of the sessions during Penn Pancreatic Care Symposium Pancreas in 2020: From Benign to Malignant, you must complete the registration form either online or by fax or mail and submit payment. Please visit <https://upenn.cloud-cmecme.com/pancreaticcare2020> for registration and additional conference information. Please note: If you intend to exhibit and attend the conference, then you must also register and pay the conference registration fee.

**Payment Methods (check the one that applies):**

Check

Make your check payable to the **Trustees of the University of Pennsylvania/CME** and return it with the completed exhibit agreement to the address below (Our Tax ID number is 23-1352685):

Crystal Mathis  
Academic Programs  
Perelman School of Medicine/CME  
JMEC, SPE, 6th floor  
University of Pennsylvania  
3400 Civic Center Blvd, Bldg. 421  
Philadelphia, PA 19104-5162

Credit Card (**DO NOT INCLUDE CREDIT CARD INFORMATION ON THIS FORM**)

If paying by Credit Card, you may fax or email this completed form.

Fax: 215-573-3663 or Email: [ycry@upenn.edu](mailto:ycry@upenn.edu)

You will then be contacted by Crystal Mathis to complete the transaction.

Contact Person: \_\_\_\_\_

Phone: \_\_\_\_\_

E-Mail: \_\_\_\_\_

Questions: [Elizabeth Butler](#): 215-898-6126 or [Crystal Mathis](#) or 215-573-3663

\*\*\*A wire transfer is also available for payment\*\*\*

Please contact Crystal Mathis at [ycry@upenn.edu](mailto:ycry@upenn.edu) for further instructions

**Terms & Conditions**

Educational activities in the exhibit area which appear to compete with the scientific program and present research results that are being presented concurrently in the scientific program are prohibited. This includes, but is not limited to, displaying posters or other promotional materials summarizing research results, promoting meeting faculty, or distributing meeting materials such as syllabi, handouts, slides, or invitations.

The only activities which may be appropriate in exhibits are for the purpose of informing meeting participants about an organization and its products and services.

The distribution (either for free or for sale) of educational enduring materials on-site that award CME credit, including but not limited to full-text reprints or copies of articles or journal self-study programs, audiotapes, videotapes, or CD ROMs, is prohibited.

Exhibitor assumes entire responsibility for all claims, losses, costs, expenses, and damages to persons or property, as well as governmental charges or fines and attorney's fees arising out of or caused by Exhibitor's installation, removal, maintenance, occupancy, or use of the exhibition premises or a part thereof.

In addition, Exhibitor does not hold the meeting venue or the University of Pennsylvania responsible for maintaining insurance to cover Exhibitor's property.

By signing below, you agree to the terms and conditions of this agreement.

---

Authorized Exhibitor Representative

Date



**Penn Medicine**  
Continuing Medical and  
Interprofessional Education

# **PENN PANCREATIC CARE SYMPOSIUM**

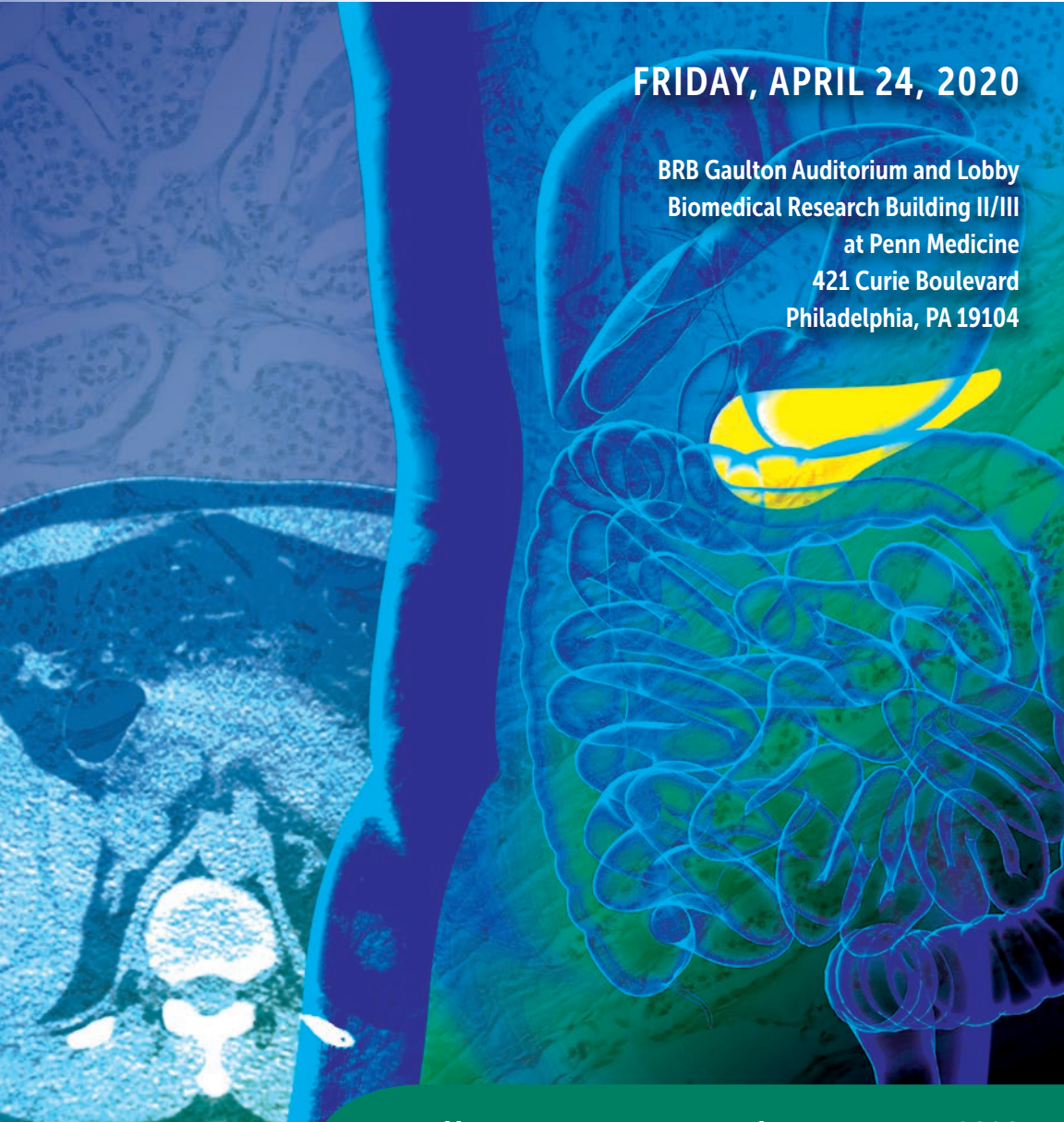
## PANCREAS IN 2020: FROM BENIGN TO MALIGNANT

**A CME/CE-ACCREDITED SYMPOSIUM**



**FRIDAY, APRIL 24, 2020**

BRB Gaulton Auditorium and Lobby  
Biomedical Research Building II/III  
at Penn Medicine  
421 Curie Boulevard  
Philadelphia, PA 19104



<https://upenn.cloud-cme.com/pancreaticcare2020>





## PROGRAM OVERVIEW & TARGET AUDIENCE

*Penn Pancreatic Care Symposium: Pancreas in 2020: From Benign to Malignant* is a one day symposium covering advances in research and clinical care for patients with pancreatic malignancy, pancreatic cysts, and pancreatitis. The course will bring clinical experts from the University of Pennsylvania and other leading institutions together to discuss the latest advances and clinical trial results pertaining to: (1) Pancreatic Ductal Adenocarcinoma (PDAC); (2) Pancreatic Cysts; (3) Pancreatic Neuroendocrine Tumors (PNET); and (4) Pancreatitis. The course format will include a series of short talks in each session followed by case-based panel discussions involving audience interaction.

This conference is designed for physicians and healthcare professionals practicing in the following areas of Gastroenterology: Surgeons, Oncologists, Radiologists, Practicing GI physicians, nurses, nurse practitioners, physician assistants, fellows, residents and medical students.

### LEARNING OBJECTIVES

Upon conclusion of this educational activity, the participant should be able to:

- Review best diagnosis and treatment options for pancreatic disease
- Discuss appropriate strategies of caring for patients with pancreatic disease
- Discuss the advances in pathophysiology of pancreatic disease

### HOSTING DEPARTMENT

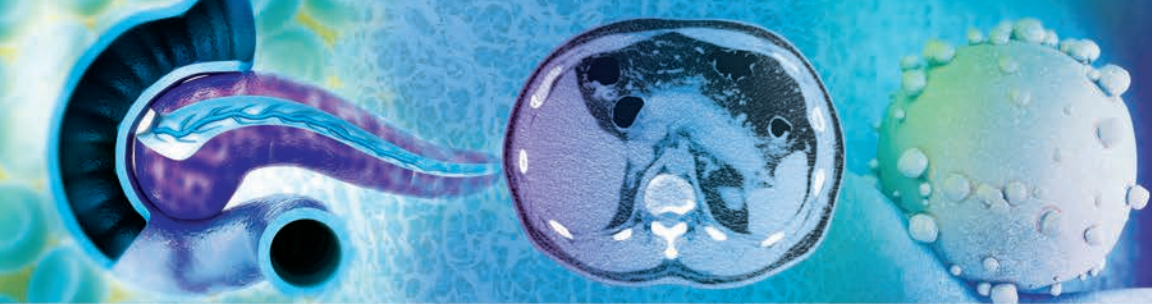
*Penn Pancreatic Care Symposium: Pancreas in 2020: From Benign to Malignant* is hosted by the Division of Gastroenterology, Department of Medicine and the Department of Surgery at Penn Medicine.

### ACCREDITATION



JOINTLY ACCREDITED PROVIDER™  
INTERPROFESSIONAL CONTINUING EDUCATION

In support of improving patient care, Penn Medicine is jointly accredited by the Accreditation Council for Continuing Medical Education (ACCME), the Accreditation Council for Pharmacy Education (ACPE), and the American Nurses Credentialing Center (ANCC), to provide continuing education for the healthcare team.



## DESIGNATION OF CREDIT

**Physicians:** Penn Medicine designates this live activity for a maximum of 8.0 *AMA PRA Category 1 Credits*<sup>™</sup>. Physicians should claim only the credit commensurate with the extent of their participation in the activity.



**ABIM MOC:** Successful completion of this CME activity, which includes participation in the evaluation component, enables the participant to earn up to 8.0 MOC points in the American Board of Internal Medicine's (ABIM) Maintenance of Certification (MOC) program. Participants will earn MOC points equivalent to the amount of CME credits claimed for the activity. It is the CME activity provider's responsibility to submit participant completion information to ACCME for the purpose of granting ABIM MOC credit.

**Nurses:** This program provides 8.0 contact hours.

**Physician Assistants:** Penn Medicine has been authorized by the American Academy of PAs (AAPA) to award AAPA Category 1 CME credit for activities planned in accordance with AAPA CME Criteria. This activity is designated for 8.0 AAPA Category 1 CME credits. PAs should only claim credit commensurate with the extent of their participation.

**Certificates and Transcripts:** After the conference has concluded, all participants will receive a follow-up email with instructions and a link. Once participants submit the request for credit, the earned credits will be available for viewing on your transcript or available for printing at <https://upenn.cloud-cme.com>. Please note that the individual certificate will not be mailed.

## REGISTRATION FEES

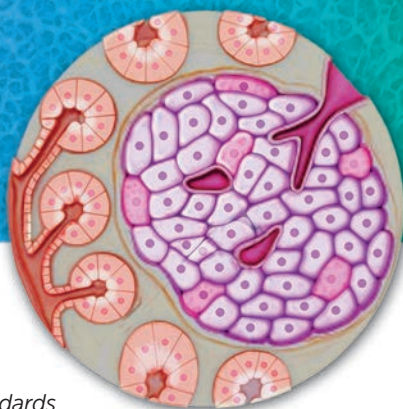
The registration fees for *Penn Pancreatic Care Symposium: Pancreas in 2020* are the following: \$99 for physicians or industry representatives, \$69 for nurse practitioners, physician assistants and other healthcare professionals, and \$29 for residents and fellows.

The registration fee includes attendance to the conference, a course booklet, a link to view the presentations online, continental breakfast, a mid-morning break, lunch and an afternoon break.

**Penn Medicine employees, faculty and staff** may register at a reduced registration fee of \$29. To register at this reduced rate, you must sign in with your Pennkey and password at <https://upenn.cloud-cme.com> register online.

**Penn Medicine Department of Medicine and Surgery employees, faculty, staff, residents and fellows** may register to attend at no charge. Register online using code PANPENN20. You must have a valid Penn Medicine ID to register. This code is only available to Penn Medicine employees who work in the Departments of Medicine or Surgery.

If you are registering with a credit card or check, please register online at <https://upenn.cloud-cme.com/pancreaticcare2020>. We cannot accept faxed or mailed registration forms with credit card information. To pay by check, complete your registration online and mail a copy of your confirmation email with your check. See the registration form for mailing information. Please note: mailed registrations can take up to 5-10 business days before they are received. All registrations will be confirmed by email as long as your registration is received no later than April 22, 2020.



## DISCLOSURES

Penn Medicine, Office of Continuing Medical and Interprofessional Education, adheres to the *ACCME Standards for Commercial Support*. Faculty and planners' disclosure information will be made available in the conference materials and syllabus. Faculty members are also expected to disclose to participants any discussions of off-label and/or investigational uses of pharmaceutical products within their presentations.

## CANCELLATION AND REFUND POLICY

In order to process refunds for course withdrawals, cancellations must be received in writing by April 10, 2020 and are subject to a \$15.00 service charge. No refunds will be issued thereafter.

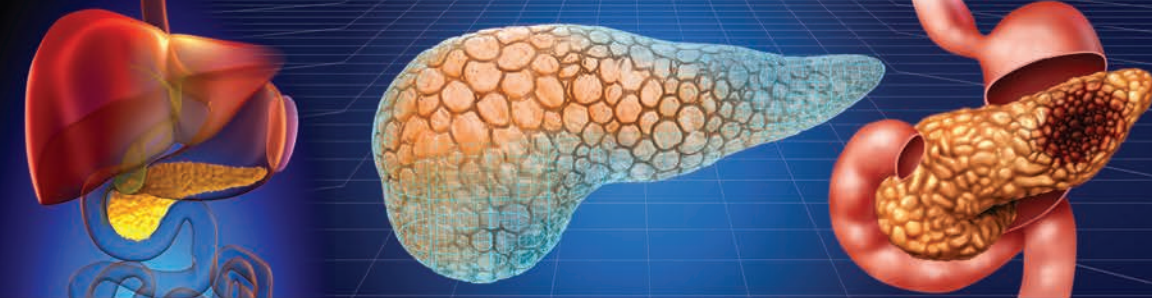
The University reserves the right to cancel or postpone this course due to unforeseen circumstances. In the event of a cancellation or postponement, the University will refund registration fees but is not responsible for related costs or expenses to participants, including cancellation fees assessed by hotels, airlines, and travel agencies.

## MEETING LOCATION

*Penn Pancreatic Care Symposium: Pancreas in 2020* will be held on Friday, April 24, 2020 at the BRB II/III Gaulton Auditorium and Lobby of the Biomedical Research Building II/III (BRB II/III) at Penn Medicine, 421 Curie Boulevard, Philadelphia, PA 19104

**Directions & Parking:** The Biomedical Research Building (BRB II/III) is located on Penn's campus across from the Stellar-Chance Laboratory Building (an enclosed walkway connects the two) and next to the Clinical Research Building (CRB). On Friday, April 24, the 3600 Civic Center Boulevard Parking Garage is open for public parking. This garage is accessible from Civic Center Boulevard and is located at Civic Center Boulevard and West Service Drive (next to the Colket Research Center). The BRB II/III is about a 5 minute walk from this parking garage. Parking is about \$20 per day. Parking fees are the responsibility of the attendee and are not validated or reimbursed by the conference.





## FACULTY

### COURSE DIRECTORS

#### **Nuzhat A. Ahmad, MD**

Professor of Medicine  
Vice Chief of Gastroenterology and Hepatology  
Associate Director of Endoscopy  
Penn Medicine  
Philadelphia, PA

#### **Ben Z. Stanger, MD, PhD**

Hanna Wise Professor of Cancer Research  
Professor of Medicine and Cell and  
Developmental Biology  
Investigator, Abramson Family Cancer  
Research Institute  
Director, Penn Pancreatic Cancer  
Research Center  
Penn Medicine  
Philadelphia, PA

#### **Charles M. Vollmer, Jr., MD**

Professor of Surgery  
Director, Pancreatic Surgery  
Penn Medicine  
Philadelphia, PA

### GUEST SPEAKERS

#### **Cristina Ferrone, MD**

Associate Professor, Surgery  
Director, Massachusetts General Hospital Liver  
Surgery Program  
Harvard Medical School  
Boston, MA

#### **Anne Marie Lennon, MD, PhD**

Professor of Medicine, Surgery, Radiology  
and Oncology  
Interim Director, Division of  
Gastroenterology and Hepatology  
Johns Hopkins University  
Baltimore, MD

### SPEAKERS

*The following speakers hold appointments  
within Penn Medicine, Philadelphia, PA.*

#### **Sara Attalla, MD**

Assistant Professor of Clinical Medicine

#### **Diann Boyd, BSN, RN, OCN**

Oncology Nurse Navigator  
Abramson Cancer Center

#### **Erica L. Carpenter, MBA, PhD**

Research Assistant Professor of Medicine  
Director, Circulating Tumor Material Laboratory

#### **Ronald P. DeMatteo, MD, FACS**

John Rea Barton Professor of Surgery  
Chair, Department of Surgery

#### **Jennifer R. Eads, MD**

Associate Professor of Clinical Medicine

#### **Patricia Gambino, MSN, RN**

Pancreatic Nurse Navigator

#### **Danielle Fortuna, MD**

Assistant Professor of Clinical Pathology  
and Laboratory Medicine

#### **Douglas L. Fraker, MD**

Professor of Surgery  
Chief, Division of Endocrine and  
Oncologic Surgery

#### **Liza Hillel, MSN, CRNP**

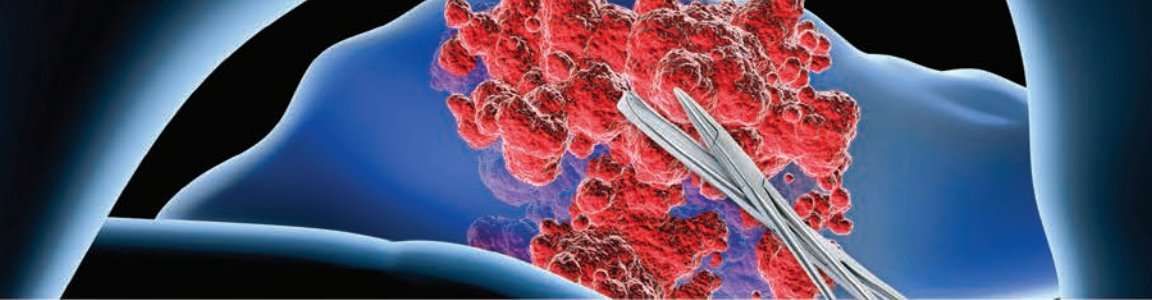
Nurse Practitioner – Advanced Endoscopy

#### **Edgar Ben-Josef, MD**

Adele and Harold Schaeffer  
Professor in Medicine  
Vice Chair, Translational Research,  
Radiation Oncology

#### **Thomas B. Karasic, MD**

Assistant Professor of Medicine



## FACULTY

**Michael L. Kochman, MD**

Wilmott Family Professor of Medicine  
Director, Advanced Endoscopic Training  
Director, Endoscopy Training  
Director, Center for Endoscopic Innovation,  
Research, and Training

**Major Kenneth Lee, IV, MD, PhD**

Assistant Professor of Surgery

**Peter Jun Woo Lee, MBChB**

Assistant Professor of Clinical Medicine

**Amy Lorenzo, MSN, CRNP**

Nurse Practitioner

**David C. Metz, MD**

Professor of Medicine  
Co-Director, Neuroendocrine Tumor Center

**Caitlin M. Perch, CRNP**

Nurse Practitioner

**Robert E. Roses, MD**

Associate Professor of Surgery

**Evan S. Siegelman, MD**

Professor of Radiology  
Section Chief, Body MRI

**Norge Vergara, MD**

Assistant Professor of Clinical Pathology  
and Laboratory Medicine

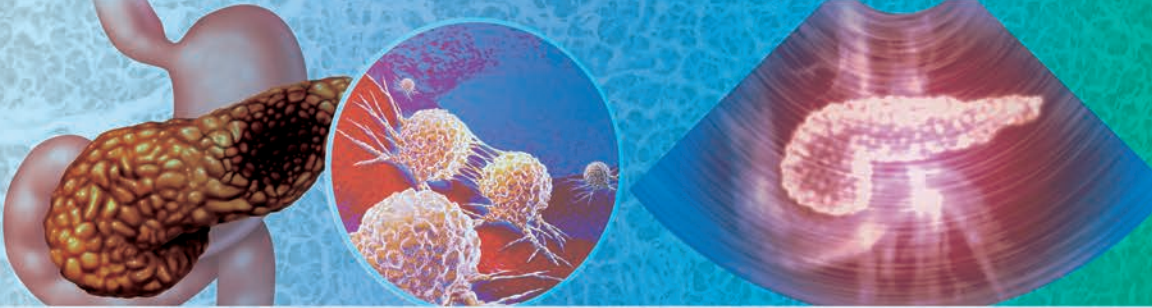


---

**SERVICES FOR THE DISABLED** If special arrangements are required for an individual with a disability to attend this meeting, please contact the Office of Continuing Medical and Interprofessional Education no later than April 10, 2020, at 215-898-6400.

**NONDISCRIMINATION STATEMENT** The University of Pennsylvania values diversity and seeks talented students, faculty, and staff from diverse backgrounds. The University of Pennsylvania does not discriminate on the basis of race, sex, sexual orientation, gender identity, religion, color, national or ethnic origin, age, disability, or status as a Vietnam Era Veteran or disabled veteran in the administration of educational policies, programs or activities; admissions policies; scholarship and loan awards; athletic, or other University administered programs or employment. Questions or complaints regarding this policy should be directed to Executive Director, Office of Affirmative Action and Equal Opportunity Programs, 3600 Chestnut Street, Sansom Place East Suite 228, Philadelphia, PA 19104-6106 or 215-898-6993 (Voice) or 215-898-7803 (TDD). [www.upenn.edu/affirm-action](http://www.upenn.edu/affirm-action).





# AGENDA

FRIDAY, APRIL 24, 2020

7:00 – 7:45 AM **Registration and Continental Breakfast**

7:45 – 8:00 AM **Opening Remarks**

Nuzhat Ahmad, MD, Charles Vollmer, Jr., MD and Ronald Dematteo, MD

## PANCREATIC CANCER

8:00 – 8:15 AM **Surgical Therapy for Pancreatic Cancer: New Approaches**

Major Kenneth Lee, IV, MD, PhD

8:15 – 8:30 AM **Emerging Therapies for Pancreatic Cancer:  
Adjuvant, Neoadjuvant and Immunotherapy**

Thomas Karasic, MD

8:30 – 8:45 AM **Management of Pancreatic Cancer: The Role of Radiation**

Edgar Ben-Josef, MD

8:45 – 9:00 AM **Pancreatic Cancer: Using Blood to Assess Risk, Stage, and Recurrence**

Erica Carpenter, MBA, PhD

9:00 – 9:30 AM **KEYNOTE:**

**Current Insights to Borderline and Locally Advanced PDAC**

Cristina Ferrone, MD

9:30 – 10:00 AM **Case Presentation and Panel Discussion:  
Resectable PDAC**

*Moderator* – Robert E. Roses, MD

*Radiologist* – Evan Siegelman, MD

*Panelists* – Edgar Ben-Joseph, MD, Erica Carpenter, MBA, PhD,  
Ronald Dematteo, MD, Cristina Ferrone, MD, Thomas Karasic, MD,  
Major Lee, MD, PhD

10:00 – 10:30 AM Break

## PANCREATIC CYSTS

10:30-10:45 AM **Pancreatic Cysts: A Multidisciplinary Approach**

Charles Vollmer, Jr., MD

10:45 – 11:00 AM **Pancreatic Cysts: Guidelines and Indication for Surgical Intervention**

Cristina Ferrone, MD

11:00 – 11:30 AM **Pancreatic Cysts: The Future Is Precise**

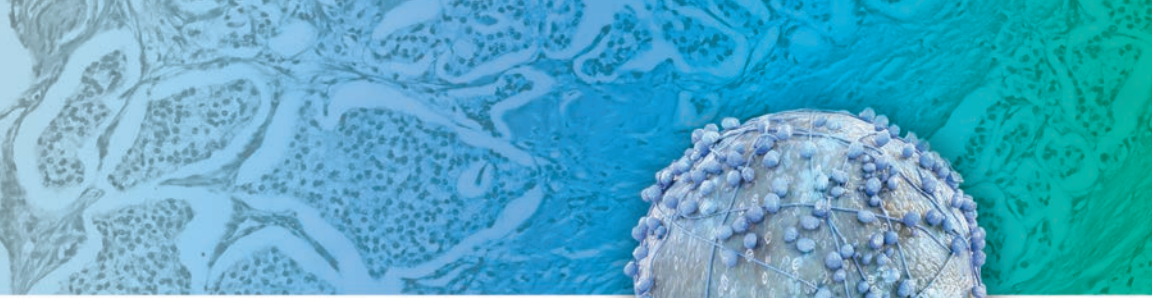
Anne Marie Lennon, MD, PhD

11:30 AM – 12:00 PM **Case Presentation and Panel Discussion**

*Moderator* – Nuzhat Ahmad, MD

*Radiologist* – Evan Siegelman, MD

*Panelists* – Cristina Ferrone, MD, Danielle Fortuna, MD, Anne Marie  
Lennon, MD, PhD, Norge Vergara, MD, Charles Vollmer, Jr. MD



12:00 – 1:30 PM Lunch

**Themed Tables:**

**(Short Introductions by Course Faculty)**

***Pancreatic Cancer Services at Penn –***

Trish Gambino, MSN, RN and Diane Boyd, BSN, RN, OCN

***PCRC –*** Ben Stanger, MD, PhD

***Meet our APPs –*** Liza Hillel, MSN, CRNP, Amy Lorenzo, MSN, CRNP, Caitlin Perch, CRNP

**PANCREATIC NEUROENDOCRINE TUMORS**

1:30 – 1:45 PM **Diagnosing NET: Is This a Zebra?**

David Metz, MD

1:45 – 2:00 PM **Pancreatic Neuroendocrine Tumors: When to Intervene**

Robert Roses, MD

2:00 – 2:15 PM **Pancreatic Neuroendocrine Tumors:  
Management of Non-Localized Disease**

Jennifer Eads, MD

2:15 – 2:30 PM **Functional Neuroendocrine Tumors**

Douglas Fraker, MD

2:30 – 3:00 PM **Case Presentation and Panel Discussion**

*Moderator –* Douglas Fraker, MD

*Radiologist –* Evan Siegelman, MD

*Panelists –* Jennifer Eads, MD, David Metz, MD, Robert Roses, MD

3:00 – 3:30 PM Break

**PANCREATITIS**

3:30 – 3:45 PM **What's New in Acute and Chronic Pancreatitis: An Update**

Peter Lee, MBChB

3:45 – 4:00 PM **Pancreatic Fluid Collections: Management Dilemmas**

Sara Attalla, MD

4:00 – 4:15 PM **Surgical Management of Chronic Pancreatitis: When to Refer?**

Charles Vollmer, Jr., MD

4:15 – 4:30 PM **Total Pancreatectomy with Islet Auto-Transplantation (TP-IAT):  
Who, What, When, Where, How?**

Major Kenneth Lee, IV, MD, PhD

4:30 – 5:00 PM **Case Presentation and Panel Discussion**

*Moderator –* Michael Kochman, MD

*Panelists –* Sara Attalla, MD, Major Kenneth Lee, IV, MD, PhD,

Peter Lee, MBChB, Charles Vollmer, Jr., MD

5:00-5:15 PM **Closing Remarks and Adjourn**

Ben Stanger, MD, PhD



# PENN PANCREATIC CARE SYMPOSIUM

## PANCREAS IN 2020: FROM BENIGN TO MALIGNANT

Friday, April 24, 2020

You may register by credit card or check online at:  
<https://upenn.cloud-cme.com/pancreaticcare2020>

Questions? Contact us at:

Phone: 215-898-6400 or 215-898-8005 • [penncme@pennmedicine.upenn.edu](mailto:penncme@pennmedicine.upenn.edu)

Please note we are unable to accept faxed or mailed registration forms with credit card payment.

Please print or type

Name (First) \_\_\_\_\_ (Last) \_\_\_\_\_

Academic Degree \_\_\_\_\_

Medical Specialty \_\_\_\_\_

Affiliation (Hospital, Office, or Company) \_\_\_\_\_

Address (  Affiliation or  Home) \_\_\_\_\_

City \_\_\_\_\_ State \_\_\_\_\_ Zip \_\_\_\_\_

Phone \_\_\_\_\_ Fax \_\_\_\_\_

E-mail \_\_\_\_\_

### REGISTRATION FEES

(pre-payment is required to be officially registered)

- Physicians and industry representatives** – \$99
- Nurse practitioners, physician assistants and other healthcare professionals** – \$69
- Residents and Fellows** – \$29
- Penn Medicine employees, faculty and staff** – \$29  
To register at this reduced rate, you must sign in with your Pennkey and password at <https://upenn.cloud-cme.com> and register online.
- Penn Medicine Department of Medicine and Surgery employees, faculty, staff, residents and fellows** – There is no charge with a valid Penn Medicine ID.  
Register online using code PANPENN20.

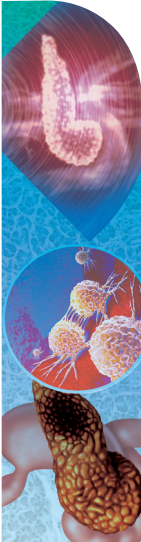
### PAYMENT METHOD

- If you are paying by check or credit card, please register online at <https://upenn.cloud-cme.com/pancreaticcare2020>
- If you are paying by check, you may mail your check made payable to **The Trustees of the University of Pennsylvania/CME** to:  
Conference Manager, Office of Continuing Medical & Interprofessional Education  
Academic Programs, Penn Medicine, JMCC, SPE, 6th floor  
3400 Civic Center Blvd, Bldg. 421, Philadelphia, PA 19104-5162
- Do not include any credit card information on the registration form or in email.

Please Note: Walk-in registrants must bring payment to the program.  
Seating may be limited for walk-in registrants.



Office of Continuing Medical & Interprofessional Education  
Academic Programs, Penn Medicine  
JMEC, SPE, 6th floor, 3400 Civic Center Blvd, Bldg. 421  
Philadelphia, PA 19104-5162



**PENN PANCREATIC CARE SYMPOSIUM**  
PANCREAS IN 2020:  
FROM BENIGN TO MALIGNANT

**FRIDAY, APRIL 24, 2020**

A CME/CNE-ACCREDITED SYMPOSIUM

BRB Gaulton Auditorium and Lobby  
Biomedical Research Building II/III  
at Penn Medicine  
421 Curie Boulevard  
Philadelphia, PA 19104

Non-Profit Org.  
U.S. Postage  
PAID  
Permit No.  
2563