

The CME/CNE-accredited symposium, **13th Annual Penn Live: GI Endoscopy and Liver Diseases 2020** will be presented Friday - Saturday, March 20 - 21, 2020 at the Smilow Center for Translational Research Perelman School of Medicine at the University of Pennsylvania, 3400 Civic Center Boulevard, Philadelphia, PA 19104. Please review the attached exhibitor agreement and agenda.

Exhibit space is available during this event at **\$2,500**. Each exhibitor will receive a standard 8' table. A tablecloth and electric will be provided, if needed. Your company will be acknowledged in the conference materials, on the signage and by the course director(s) during the welcome address. Exhibits will be set-up in the foyer. This high-traffic area is designated for breakfast and breaks. We anticipate approximately 250 attendees and speakers. **Please act quickly as space is limited!**

Program Overview and Target Audience

This program is designed to demonstrate the application and execution of therapeutic gastrointestinal endoscopy. Using a format of lectures and live cases, our faculty will address challenges & practical solutions in the endoscopic management of digestive disorders including benign and malignant disorders of the esophagus, gastroduodenum, pancreas, bile ducts, and colorectum. Additional topics will include applications of endoluminal resection, radiofrequency ablation, argon plasma coagulation, ERCP, endoscopic ultrasound, polypectomy, and endoprostatic therapies. The program will also focus on the current research and recommendations for managing patients with acute and chronic liver disease, including viral and autoimmune hepatitis, metabolic liver disease, portal hypertensive bleeding, refractory ascites, hepatic encephalopathy, liver transplantation and post liver transplant considerations. This conference is designed for Gastroenterologists, Hepatologists, GI Surgeons, GI Radiologists, Gastroenterology Fellows, GI Nurses, Nurse Practitioners, Physician Assistants, Medical Residents and Medical Students.

If you are interested in reserving exhibit space, please complete and sign the attached Exhibitor Agreement and return it along with your exhibit fee to:

Crystal Mathis
Academic Programs
Perelman School of Medicine/CME
JMEC, SPE, 6th floor
University of Pennsylvania
3400 Civic Center Blvd, Bldg. 421
Philadelphia, PA 19104-5162
Phone: 215-898-8005/Fax: 215-573-3663
Email: ycry@upenn.edu
<https://upenn.cloud-cme.com/pennlive2020>

Exhibitor Agreement

13th Penn Live: GI Endoscopy and Liver Diseases 2020

Friday - Saturday, March 20 - 21, 2020

Company Name: _____ ("Exhibitor")

(As it will appear in the syllabus)

Exhibit Fee: \$2,500.00 per Tabletop Exhibit

of Tables Requested _____ **@ \$2,500.00 each = \$** _____

Representative Names (*only 2 representatives will be allowed on-site*):

1) _____ 2) _____

Email: _____ Email: _____

Phone: _____ Phone: _____

Fax: _____ Fax: _____

Terms & Conditions

All exhibitors are provided with an 8' table and chairs. Set-up begins on Friday, March 20, 2020 at 6:30 am. If you require additional set-up time, please contact us, and we will assist in any way we can. Exhibitors should expect participants to begin arriving at 7:30 am. Although the exhibit area is secured, vendors are discouraged to leave any valuable items, such as laptops or phones unattended.

Breakdown of exhibits must be completed by 2:45 pm on Saturday, March 21, 2020.

Display Information

Exhibitors are responsible for supply, set-up, takedown, delivery, and any additional costs of display needs beyond the 8' skirted table. Please let us know what your needs are so that we can accommodate your display:

Will you be bringing your own tablecloth? Yes No

Will you need electricity for your display? Yes No

Will you bring your own extension cord? Yes No

What type of equipment is being displayed (lights, machines, etc.)? _____

How many pieces of equipment need electricity? _____

Do any machines require any special outlets for operation? Name outlet type: _____

What additional information regarding your exhibit should we know? _____

Meeting Location & Display Details

13th Penn Live: GI Endoscopy and Liver Diseases 2020 will be held Friday - Saturday, March 20 - 21, 2020, in the Arthur H. Rubenstein Auditorium, Smilow Center for Translational Research Perelman School of Medicine at the University of Pennsylvania, 3400 Civic Center Boulevard, Philadelphia, PA 19104.

Tables will not be designated. Continental breakfast and breaks will be set-up among the exhibits in the foyer. Each exhibitor can expect to receive one 8' skirting table and two chairs. Please be sure your exhibit materials fit within the specs of 8'x8'. If needed, you are welcome to purchase additional booth space.

Overnight Information

There are no special room rates for the course. Please contact the following hotels directly if you are interested in overnight accommodations.

<p>The Study at University City Hotel 20 South 33rd Street Philadelphia, PA 19104 215-387-1400 https://www.thestudyatuniversitycity.com/</p>	<p>Homewood Suites by Hilton 4109 Walnut Street Philadelphia, PA 19104 215-382-1111 www.HomewoodUnivCity.com <i>*Homewood Suites offers a complimentary shuttle service</i></p>
<p>Sheraton University City Hotel 3600 Chestnut Street Philadelphia, PA 19104 215-387-8000 www.sheraton.com/universitycity</p>	<p>The Inn at Penn 3600 Sansom Street Philadelphia, PA 19104 215-222-0200 www.theinnatpenn.com</p>

Shipping Information

(Please label all boxes with the following information)

Smilow Center for Translational Research
3400 Civic Center Boulevard
Philadelphia, PA 19104
Attention: Willie Williams /Ansheai Spence-Jones
215-573-7694

HOLD FOR SMILOW COMMONS
Ansheai Spence-Jones/Willie Williams
12th Penn Live
Friday - Saturday, March 20 - 21, 2020

[YOUR COMPANY] ♦ [REPRESENTATIVE'S NAME]
Package # _____ of _____

Please do not ship any materials to the venue before Thursday, March 19, 2020

Attendee Registration

If you would like to attend any or all of the sessions during 13th Penn Live: GI Endoscopy and Liver Diseases 2020, you must complete the registration form either online or by fax or mail and submit payment. Please visit <https://upenn.cloud-cme.com/pennlive2020> for registration and additional conference information. Please note: If you intend to exhibit and attend the conference, then you must also register and pay the conference registration fee.

Payment Methods (check the one that applies):

Check

Make your check payable to the **Trustees of the University of Pennsylvania/CME** and return it with the completed exhibit agreement to the address below (Our Tax ID number is 23-1352685):

Crystal Mathis
Academic Programs
Perelman School of Medicine/CME
JMEC, SPE, 6th floor
University of Pennsylvania
3400 Civic Center Blvd, Bldg. 421
Philadelphia, PA 19104-5162

Credit Card (**DO NOT INCLUDE CREDIT CARD INFORMATION ON THIS FORM**)

If paying by Credit Card, you may fax or email this completed form.

Fax: 215-573-3663 or Email: ycry@upenn.edu

You will then be contacted by Crystal Mathis to complete the transaction.

Contact Person: _____

Phone: _____

E-Mail: _____

Questions: [Elizabeth Butler](#): 215-898-6126 or [Crystal Mathis](#) or 215-573-3663

A wire transfer is also available for payment

Please contact Crystal Mathis at ycry@upenn.edu for further instructions

Terms & Conditions

Educational activities in the exhibit area which appear to compete with the scientific program and present research results that are being presented concurrently in the scientific program are prohibited. This includes, but is not limited to, displaying posters or other promotional materials summarizing research results, promoting meeting faculty, or distributing meeting materials such as syllabi, handouts, slides, or invitations.

The only activities which may be appropriate in exhibits are for the purpose of informing meeting participants about an organization and its products and services.

The distribution (either for free or for sale) of educational enduring materials on-site that award CME credit, including but not limited to full-text reprints or copies of articles or journal self-study programs, audiotapes, videotapes, or CD ROMs, is prohibited.

Exhibitor assumes entire responsibility for all claims, losses, costs, expenses, and damages to persons or property, as well as governmental charges or fines and attorney's fees arising out of or caused by Exhibitor's installation, removal, maintenance, occupancy, or use of the exhibition premises or a part thereof.

In addition, Exhibitor does not hold the meeting venue or the University of Pennsylvania responsible for maintaining insurance to cover Exhibitor's property.

By signing below, you agree to the terms and conditions of this agreement.

Authorized Exhibitor Representative

Date



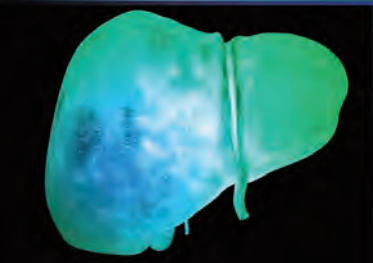
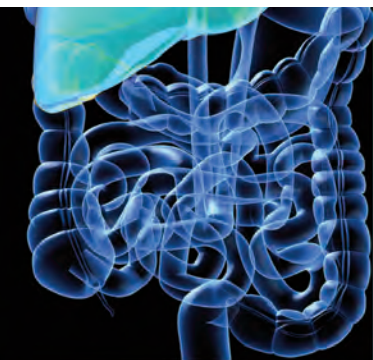
Penn Medicine

Continuing Medical and
Interprofessional Education

The Division of Gastroenterology
at Penn Medicine
Presents

13th Annual

PENN LIVE:
GI ENDOSCOPY AND
LIVER DISEASE 2020



A CME/CNE-ACCREDITED CONFERENCE

Friday–Saturday
March 20-21, 2020

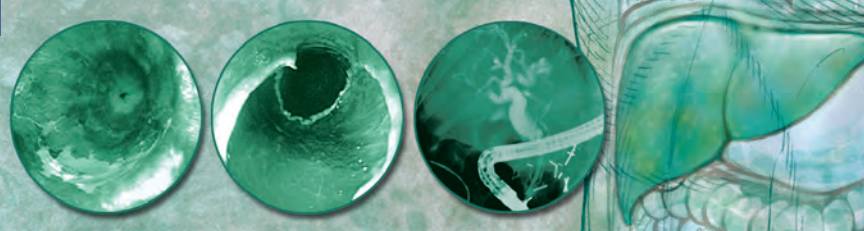
Arthur H. Rubenstein Auditorium
Smilow Center for
Translational Research
Perelman School of Medicine
University of Pennsylvania
3400 Civic Center Boulevard
Philadelphia, PA 19104

<https://upenn.cloud-cme.com/pennlive2020>

This conference is endorsed
by the American Society for
Gastrointestinal Endoscopy



American Society for
Gastrointestinal Endoscopy



PROGRAM OVERVIEW & TARGET AUDIENCE

This program is designed to demonstrate the application and execution of therapeutic gastrointestinal endoscopy. Using a format of lectures and live cases, our faculty will address challenges & practical solutions in the endoscopic management of digestive disorders including benign and malignant disorders of the esophagus, gastroduodenum, pancreas, bile ducts, and colorectum. Additional topics will include applications of endoluminal resection, radiofrequency ablation, argon plasma coagulation, ERCP, endoscopic ultrasound, polypectomy, and endoprosthetic therapies.

The program will also focus on the current research and recommendations for managing patients with acute and chronic liver disease, including viral and autoimmune hepatitis, metabolic liver disease, portal hypertensive bleeding, refractory ascites, hepatic encephalopathy, liver transplantation and post liver transplant considerations.

This conference is designed for Gastroenterologists, Hepatologists, GI Surgeons, GI Radiologists, Gastroenterology Fellows, GI Nurses, Nurse Practitioners, Physician Assistants, Medical Residents and Medical Students.

Learning Objectives

Upon completion of this activity, participants should be able to:

- Discuss updates and practical approaches to managing patients with acute and chronic liver disease, including viral and autoimmune hepatitis, metabolic liver disease, portal hypertensive bleeding, refractory ascites, hepatic encephalopathy, liver transplantation and post liver transplant considerations
- Review and assess updates in digestive disease management
- Identify cognitive and technical challenges as well as practical solutions in the endoscopic management of digestive and related disorders including benign and malignant disorders of the esophagus, gastroduodenum, pancreas, bile ducts, and colorectum
- Describe indications and contraindications for therapeutic endoscopy procedures

Hosting Department

The *13th Annual Penn Live: GI Endoscopy and Liver Disease 2020* is hosted by the Division of Gastroenterology at Penn Medicine.



Accreditation



JOINTLY ACCREDITED PROVIDER[®]
INTERPROFESSIONAL CONTINUING EDUCATION

In support of improving patient care, Penn Medicine is jointly accredited by the Accreditation Council for Continuing Medical Education (ACCME), the Accreditation Council for Pharmacy Education (ACPE), and the American Nurses Credentialing Center (ANCC), to provide continuing education for the healthcare team.

Designation of Credit

Physicians: Penn Medicine designates this live activity for a maximum of 12.5 *AMA PRA Category 1 Credits*[™]. Physicians should claim only the credit commensurate with the extent of their participation in the activity.

Nurses: This program provides 12.5 contact hours.



ABIM MOC: Successful completion of this CME activity, which includes participation in the evaluation component, enables the participant to earn up to 12.5 MOC points in the American Board of Internal

Medicine's (ABIM) Maintenance of Certification (MOC) program. Participants will earn MOC points equivalent to the amount of CME credits claimed for the activity. It is the CME activity provider's responsibility to submit participant completion information to ACCME for the purpose of granting ABIM MOC credit.

Physician Assistants: AAPA accepts certificates of participation for educational activities certified for *AMA PRA Category 1 Credit*[™] from organizations accredited by ACCME or a recognized state medical society. PAs may receive a maximum of 12.5 Category 1 credits for completing this activity.

Certificates and Transcripts: After the conference has concluded, all participants will receive a follow-up email with instructions and a link. Once participants submit the request for credit, the earned credits will be available for viewing on a transcript and certificates will be available for printing at <https://upenn.cloud-cme.com>. Please note that the individual certificate will not be mailed.

Disclosures

Penn Medicine, Office of Continuing Medical and Interprofessional Education, adheres to the *ACCME Standards for Commercial Support*. Faculty disclosure information will be made available in the conference materials and syllabi. Faculty members are also expected to disclose to participants any discussions of off-label and/or investigational uses of pharmaceutical products or devices within their presentations.

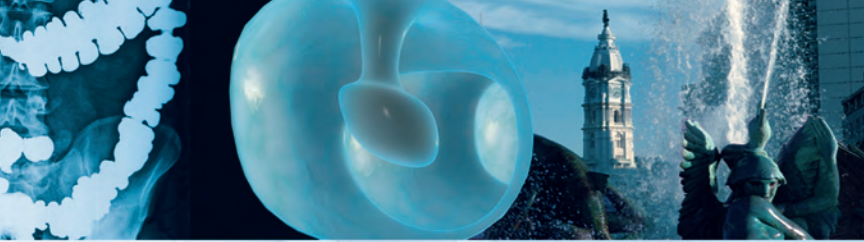
Registration Fees

The registration fees for the *13th Annual Penn Live: GI Endoscopy and Liver Disease 2020* are \$175 for physicians and industry employees and \$75 for nurse practitioners, physician assistants, healthcare professionals, residents and fellows.

Penn Medicine employees, faculty and staff: The registration fee is \$39. In order to register at the reduced rate, you must sign-in with your Pennkey and password to your account at <https://upenn.cloud-cme.com> and register online.

The registration fee includes attendance to the conference, a course booklet, a link to view the presentations online, continental breakfast, mid-morning and afternoon breaks as well as lunch each day.

If you are registering with a credit card, please register online at <https://upenn.cloud-cme.com/pennlive2020>. We cannot accept faxed or mailed registration forms with credit card information. To pay by check, complete the



registration form and mail it in with your check. Please see the registration form for mailing information.

Please note: mailed registrations can take up to 5-10 business days before they are received. All registrations will be confirmed by email as long as your registration is received no later than March 18, 2020.

Cancellation and Refund Policy

In order to process refunds for course withdrawals, cancellations must be received in writing by February 26, 2020 (subject to a service charge equivalent to 10% of the registration fee, but no less than \$15.00). No refunds will be issued thereafter.

The University reserves the right to cancel or postpone any course due to unforeseen circumstances. In the event of cancellation or postponement, the University will refund registration fees, but is not responsible for related costs or expenses to participants, including cancellation fees assessed by hotels, airlines, and travel agencies.

Meeting Location

The *13th Annual Penn Live: GI Endoscopy and Liver Disease 2020* will be held Friday-Saturday, March 20-21, 2020 at the Smilow Center for Translational Research, Perelman School of Medicine at the University of Pennsylvania, 3400 Civic Center Boulevard, Philadelphia, Pennsylvania, 19104.

Directions & Parking: The Arthur H. Rubenstein Auditorium is located on the 1st Floor level of the Smilow Translational Research Center. Smilow CTR is connected to the Perelman Center for Advanced Medicine and is located at 3400 Civic Center Blvd, Philadelphia, PA. We strongly recommend you use GPS or use an online driving directions site (such as mapquest.com, drivingdirections.com or googlemaps.com) for exact directions to and from your starting point or if you prefer, to take public transportation to and from campus, please visit <http://www.upenn.edu/services/transportation> for options.

On Friday, March 20th, the 3600 Civic Center Blvd Parking Garage is open for public parking. This garage is accessible from Civic Center Blvd and is located at Civic Center Blvd and West Service Drive (next to the Colket Research Center). Smilow TRC is about a 5 minute walk from this parking garage. Parking is \$20 per day. This garage is only open Monday-Friday. It is closed on weekends.

On Saturday, March 21st, the Perelman Center for Advanced Medicine garage (3400 Civic Center Blvd) is open to those attending Penn Live 2020. The conference will validate the parking fees on Saturday ONLY and only in the PCAM Parking Garage. Parking fees on Friday will not be validated or reimbursed.

Overnight Accommodation Options

There are no special room rates for course participants. Please contact the following hotels directly if you are interested in overnight room reservations:

The Study at University City Hotel
20 South 33rd Street
Philadelphia, PA 19104
215-387-1400
<https://www.thestudyatuniversitycity.com/>

Homewood Suites by Hilton
4109 Walnut Street
Philadelphia, PA 19104
215-382-1111
www.HomewoodUnivCity.com
**Homewood Suites offers a complimentary shuttle service*

The Inn at Penn
3600 Sansom Street
Philadelphia, PA 19104
215-222-0200
www.theinnatpenn.com

Sheraton University City Hotel
3600 Chestnut Street
Philadelphia, PA 19104
215-387-8000
www.sheraton.com/universitycity



With the exception of the guest faculty, the Course Directors & Faculty hold academic and/or clinical appointments from the Perelman School of Medicine at the University of Pennsylvania and Penn Medicine, Philadelphia, PA

Course Directors

Nuzhat A. Ahmad, MD

Professor of Medicine

Vice Chief of Gastroenterology and Hepatology

Associate Director of Endoscopy

Associate Chief for Clinical Affairs

Gregory G. Ginsberg, MD

Professor of Medicine

Executive Director of Endoscopy

David E. Kaplan, MD, MSc

Associate Professor of Medicine

Director of Hepatology

Philadelphia VA Medical Center

K. Rajender Reddy, MD

Ruimy Family President's Distinguished Professor of Medicine

Director of Hepatology

Director, Viral Hepatitis Center

Medical Director, Liver Transplantation

Guest Faculty

Ann Marie Joyce, MD

Clinical Associate Professor of Medicine

Beth Israel Lahey Hospital & Medical Center

Tufts University School of Medicine

Burlington, MA

Jennifer Lai, MD, MBA

Associate Professor of Medicine

University of California at San Francisco

San Francisco, CA

Nancy S. Reau, MD

Professor of Medicine

The Richard B. Capps Chair and Section Chief, Hepatology

Associate Director, Organ Transplantation

Rush University

Chicago, IL

Course Faculty

Sara Attalla, MD

Assistant Professor of
Clinical Medicine

Therese Bittermann, MD, MSCE

Assistant Professor of Medicine

Anna Buchner, MD, PhD

Assistant Professor of Medicine

Rotonya Carr, MD

Assistant Professor of Medicine
Co-Director, Human Metabolic
Tissue Resource, Institute of
Diabetes, Obesity and Metabolism

Crystale Cruz, MD

Instructor in Medicine
Advanced Endoscopy Fellow

Colleen Demopoulos, BSN, CAPA

Nurse Manager
Perioperative Services/Endoscopy
Hospital of the University
of Pennsylvania

Kimberly A. Forde, MD, MHS

Assistant Professor of Medicine
and Epidemiology
Senior Scholar, Center For Clinical
Epidemiology and Biostatistics (CCEB)

Immanuel Ho, MD

Clinical Professor of Medicine
Director of Interventional Endoscopy
Pennsylvania Hospital

Maarouf Hoteit, MD

Associate Professor of Clinical Medicine
Director of Liver Cancer Program
Associate Medical Director,
Liver Transplantation

David L. Jaffe, MD

Professor of Clinical Medicine
Advisory Dean, Medical Students

Michael L. Kochman, MD

Wilmott Family Professor of Medicine
Director, Advanced Endoscopic Training
Director, Endoscopy Training
Director, Center for Endoscopic
Innovation, Research, and Training

Peter Jun Woo Lee, MBChB

Assistant Professor of
Clinical Medicine

David C. Metz, MD

Professor of Medicine

Frederick A. Nunes, MD

Clinical Professor of Medicine
Director of Gastroenterology
Pennsylvania Hospital

Kashyap Panganamamula, MD

Clinical Associate Professor of Medicine
Director of Therapeutic Endoscopy
Penn Presbyterian Medical Center

Stacey Prenner, MD

Assistant Professor of
Clinical Medicine

James C. Reynolds, MD

Professor of Clinical Medicine
Chief of Gastroenterology

Kenneth D. Rothstein, MD

Professor of Clinical Medicine
Director of Regional Hepatology

Monica Saumoy, MD, MS

Assistant Professor of
Clinical Medicine

Marina Serper, MD, MSc

Assistant Professor of Medicine

Steven Solga, MD

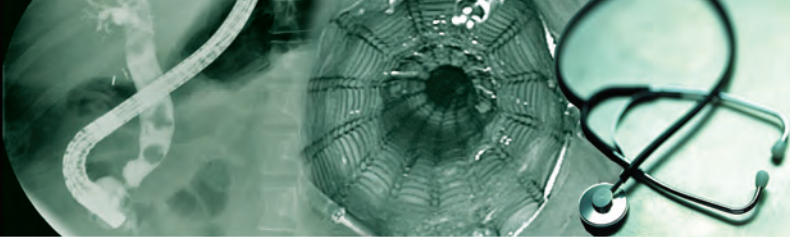
Associate Professor of
Clinical Medicine
Director, Transplant Hepatology
Fellowship

Joseph Triggs, MD

Instructor in Medicine
Advanced Endoscopy Fellow

Ethan M. Weinberg, MD, MS

Assistant Professor of
Clinical Medicine



Friday, March 20, 2020

7:30 AM

Registration and Continental Breakfast

8:00 AM

Welcome/Introduction

Nuzhat Ahmad, MD, Gregory Ginsberg, MD and James Reynolds, MD

8:15 AM

Endoscopic Therapy for Chronic Pancreatitis

Peter Lee, MBChB

8:30 AM

Live Cases

Moderators: Ann Marie Joyce, MD and Peter Lee, MBChB

9:30 AM

Difficult Cannulation in ERCP

Sara Attalla, MD

10:00 AM **Break**

10:15 AM

Update on Extreme Endoscopy

Monica Saumoy, MD, MS

10:45 AM

Live Cases

Moderators: Ann Marie Joyce, MD and Monica Saumoy, MD, MS

11:30 AM

Endoscopic Management of Colonic Obstruction

Ann Marie Joyce, MD

12:00 PM **Lunch**

1:00 PM

Update on GI Neuroendocrine Tumors

David Metz, MD

1:15 PM

Live Cases

Moderators: David Metz, MD and David Jaffe, MD

2:15 PM

Update on Endoscopy in IBD

Anna Buchner, MD

2:30 PM **Break**

3:00 PM

Live Cases

Moderators: Immanuel Ho, MD and Kasbyap Panganmamula, MD

4:15 PM

13th William "Bob" Long Lecture

How do we Work up an Indeterminate Biliary Stricture?
Ann Marie Joyce, MD

5:00 PM **Adjourn**

Faculty will allow 5 minutes at the end of their presentation for Q&A.

Services for the Disabled If special arrangements are required for an individual with a disability to attend this conference, please contact the Office of Continuing Medical and Interprofessional Education no later than February 26, 2020 at 215-898-8005.

Nondiscrimination Statement The University of Pennsylvania values diversity and seeks talented students, faculty, and staff from diverse backgrounds. The University of Pennsylvania does not discriminate on the basis of race, sex, sexual orientation, gender identity, religion, color, national or ethnic origin, age, disability, or status as a Vietnam Era Veteran or disabled veteran in the administration of educational policies, programs or activities; admissions policies; scholarship and loan awards; athletic, or other University administered programs or employment. Questions or complaints regarding this policy should be directed to Executive Director, Office of Affirmative Action and Equal Opportunity Programs, 3600 Chestnut Street, Sansom Place East Suite 228, Philadelphia PA 19104-6106 or 215-898-6993 (Voice) or 215- 898-7803 (TDD). www.upenn.edu/affirm-action

Friday and Saturday
March 20-21, 2020

AGENDA

Saturday, March 21, 2020

Session I

Moderator: *David E. Kaplan, MD, MSc*

7:30 AM

Registration and Continental Breakfast

8:00 AM

Remaining Challenges in Hepatitis C

Nancy Reau, MD

8:30 AM

Management of Nutrition and Frailty in Cirrhotic Patients

Jennifer Lai, MD

9:00 AM

Achieving Weight Loss in NAFLD

Rotonya Carr, MD

9:35 AM

Case-Based Discussion

Moderator: *Frederick Nunes, MD*

Panelists: *Kenneth Rothstein, MD,*

Jennifer Lai, MD and

Rontonya Carr, MD

10:05AM **Break**

10:30 AM

A Middle-aged Woman With Hematemesis

Kimberly A. Forde, MD, PhD

11:00 AM

Palliative Care in End-Stage Liver Disease

Jennifer Lai, MD

Session II

Moderator: *Maarouf Hoteit, MD*

11:30 AM

Management of Liver Disease in Pregnancy

Nancy Reau, MD

11:55 AM **Lunch**

12:55 PM

Telemedicine for Liver Disease

Marina Serper, MD

1:05 PM

Alcoholic Liver Disease

Steve Solga, MD

1:40 PM

A Young Woman with an Abnormal Liver Ultrasound

Stacey Prenner, MD

2:05 PM

Live Donation in Liver Transplant

Therese Bittermann, MD

2:30 PM

Wrap-up/Questions from the Audience

Panelists: *Maarouf Hoteit, MD and*

David E. Kaplan, MD, MSc

2:45 PM **Adjourn**

Faculty will allow 5 minutes at the end of their presentation for Q&A.

13th Annual

**PENN LIVE: GI ENDOSCOPY
AND LIVER DISEASE 2020**

Registration Form

Friday and Saturday
March 20-21, 2020

If you are registering using your credit card, please register online at:
<https://upenn.cloudcme.com/pennlive2020>

Questions? Contact us at:

Phone: 215-898-6400 or 215-898-8005 • penncme@penncme.upenn.edu

Please note we are unable to accept faxed registration forms.

Please print or type

Name (First)

(Last)

Academic Degree

Medical Specialty

Affiliation (Hospital, Office, or Company)

Address (Affiliation or Home)

City

State

Zip

Phone

Fax

E-mail

Registration Fee (pre-payment is required to be officially registered)

- \$175.00 for Practicing Physicians and Industry Representatives
- \$75.00 for Nurses, Healthcare Professionals, Residents and Fellows
- \$39.00 for Penn Medicine Employees, Faculty and Staff

Penn Medicine ID # _____

Payment Method

- If you are paying by credit card, please register online at
<https://upenn.cloud-cme.com/pennlive2020>
- If you are paying by check, you may mail your completed registration form and check made payable to **The Trustees of the University of Pennsylvania/CME** to: Conference Manager, Office of Continuing Medical & Interprofessional Education Academic Programs, Penn Medicine JMEC, SPE, 6th floor, 3400 Civic Center Blvd, Bldg. 421 Philadelphia, PA 19104-5162
- Do not include any credit card information on the registration form or email any credit card information

Please Note: Walk-in registrants must bring payment to the program.

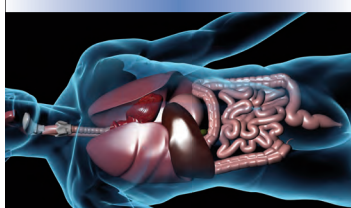
Seating may be limited for walk-in registrants.



Penn Medicine
Continuing Medical and
Interprofessional Education

Office of Continuing Medical & Interprofessional Education
Academic Programs, Penn Medicine
JMEC, SPE, 6th floor, 3400 Civic Center Blvd, Bldg. 421
Philadelphia, PA 19104-5162

Non-Profit Org.
U.S. Postage
PAID
Permit No.
2563



13th Annual

**PENN LIVE: GI ENDOSCOPY
AND LIVER DISEASE 2020**

A CME/CNE-ACCREDITED CONFERENCE

**Friday and Saturday
March 20-21, 2020**

Arthur H. Rubenstein Auditorium
Smilow Center for Translational Research
Perelman School of Medicine
University of Pennsylvania
3400 Civic Center Boulevard
Philadelphia, PA 19104



**This conference is endorsed by the
American Society for Gastrointestinal Endoscopy**