



**Penn Medicine**

Continuing Medical and  
Interprofessional Education

**IN-PERSON AND VIRTUAL**

# PENN NEUROMUSCULAR SYMPOSIUM 2025

**CME-ACCREDITED SYMPOSIUM**

**SATURDAY, MAY 17, 2025**

7:45 AM – 3:10 PM EDT

Arthur H. Rubenstein Auditorium at the  
Smilow Center for Translational Research  
3400 Civic Center Blvd.  
Philadelphia, PA 19104

<https://upenn.cloud-cme.com/neuromuscular2025>



# PROGRAM OVERVIEW & TARGET AUDIENCE

The annual *Penn Neuromuscular Symposium* will discuss available and novel therapies for patients with neuromuscular disorders ranging from immuno-modulation to gene therapy. Experts will also present clinical cases selected from the Penn neuromuscular clinic to discuss where new diagnostic methods and treatments apply. The course will be interactive and attendees are encouraged to participate and exchange their experience and ask questions as they see fit.



The Symposium will also explain how to enhance collaboration and knowledge exchange among neurologists and other healthcare professionals taking care of this unique patient population, which will also help facilitate enrollment in exciting clinical trials here at Penn.

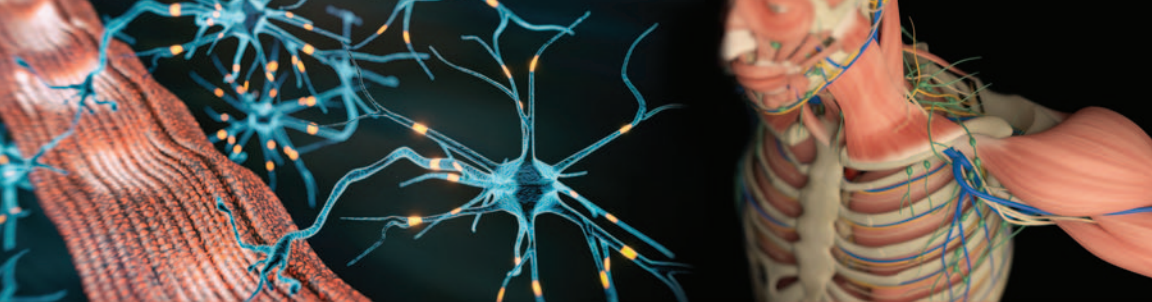
## LEARNING OBJECTIVES

Upon conclusion of this educational activity, the participant will be better able to:

- Describe novel treatment in myasthenia gravis
- Discuss new methods to diagnose and treat neuropathy in Hereditary Transthyretin Amyloidosis
- Discuss different types of demyelinating neuropathies and how to manage them
- Describe novel treatments for people with SMA and ALS
- Discuss management of neuromuscular complications of vasculitis
- Apply antibody testing in inflammatory myopathies and describe novel therapies for inflammatory myopathies
- Discuss gene therapy for hereditary myopathies
- Discuss application of car-T in autoimmune neuromuscular disorders.

## HOSTING DEPARTMENT

The *Penn Neuromuscular Symposium* is hosted by the Department of Neurology at Penn Medicine.



## ACCREDITATION



In support of improving patient care, Penn Medicine is jointly accredited by the Accreditation Council for Continuing Medical Education (ACCME), the Accreditation Council for Pharmacy Education (ACPE), and the American Nurses Credentialing Center (ANCC), to provide continuing education for the healthcare team.

## DESIGNATION OF CREDIT

**Physicians:** Penn Medicine designates this live activity for a maximum of 6.25 *AMA PRA Category 1 Credits™*. Physicians should claim only the credit commensurate with the extent of their participation in the activity.

**Physician Assistants:** AAPA accepts certificates of participation for educational activities certified for *AMA PRA Category 1 Credit™* from organizations accredited by ACCME or a recognized state medical society. PAs may receive a maximum of 6.25 Category 1 credits for completing this activity.

**Nurses:** This program provides 6.25 NCPD hours..

**ABS MOC:** Successful completion of this CME activity, which includes participation in the evaluation component, enables the learner to earn 6.25 credits toward the CME and Self-Assessment requirements of the American Board of Surgery's Continuous Certification program. It is the CME activity provider's responsibility to submit learner completion information to ACCME for the purpose of granting ABS credit.

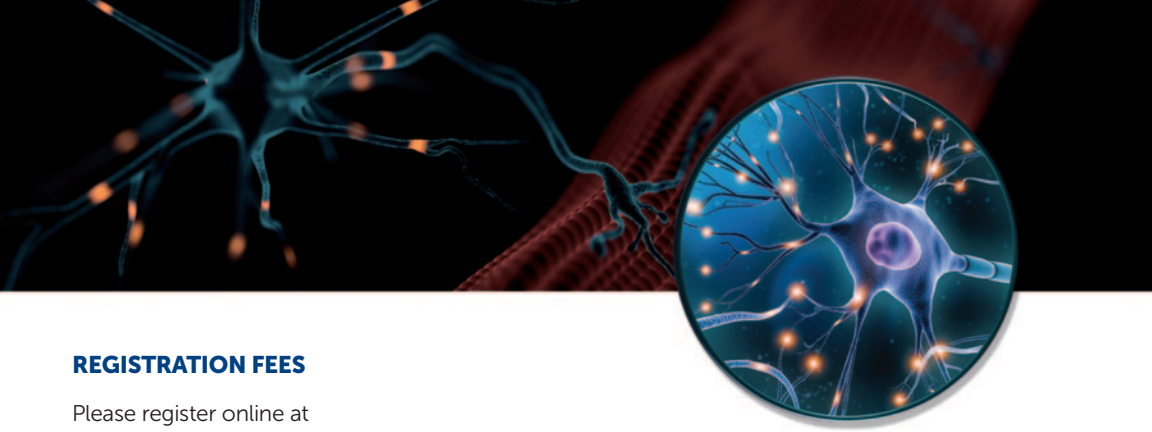
**Certificates and Transcripts:** After the conference has concluded, all participants will receive a follow-up email with instructions and a link with instructions on how to claim their credit. Once participants submit the request for credit, the earned credits will be available for viewing on your transcript or available for printing at <https://upenn.cloud-cme.com>. Please note that the individual certificate will not be mailed.

## LIVE AND VIRTUAL PRESENTATIONS

*Penn Neuromuscular Symposium* will be held Saturday, May 17, 2025 by in-person or live-stream (virtual) attendance. The live and virtual presentations will follow the scheduled agenda in real time (EDT).

## IN PERSON MEETING LOCATION

Arthur H. Rubenstein Auditorium at the Smilow Center for Translational Research  
3400 Civic Center Blvd., Philadelphia, PA 19104



## REGISTRATION FEES

Please register online at

<https://upenn.cloud-cme.com/neuromuscular2025>.

### **In-person Registration Fees**

The fees to attend in-person are as follows: \$125 for physicians and industry attendees, \$75 for nurse practitioners, physician assistants and other healthcare professionals. There is no fee for residents, fellows, students and Penn Medicine Neurology employees, faculty and staff to attend.

All pre-registered, in-person attendees will receive access to the conference, attendee booklet, continental breakfast, lunch and breaks. Registration also includes access to view the presentations online for one year. Walk-ins are discouraged. Please be sure to register in advance.

### **Live-stream Registration Fees**

The fees to attend virtually are as follows: \$100 for physicians and industry attendees, \$50 for nurse practitioners, physician assistants and other healthcare professionals. There is no fee for residents, fellows, students and Penn Medicine Neurology employees, faculty and staff to attend.

All pre-registered virtual attendees will receive an email that includes a link with instructions to sign-in and join the virtual conference 48 hours preceding the symposium, as well as the attendee booklet (downloadable PDF). Registration also includes access to view the presentations online for one year.

### **Need to Register by Mail?**

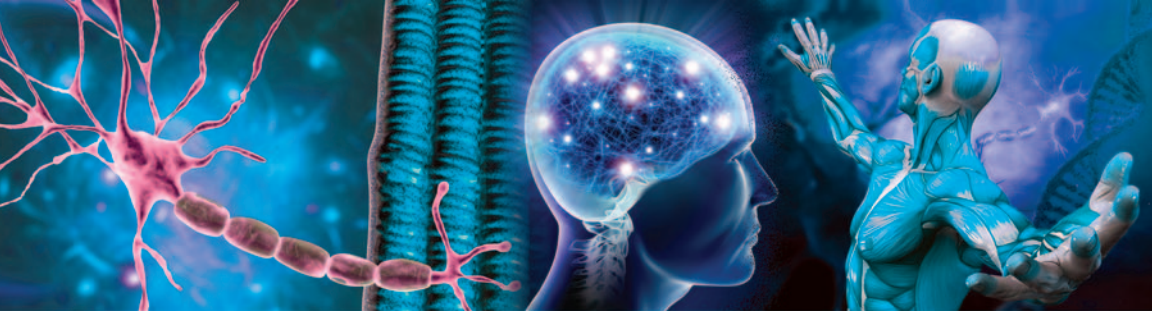
*Please note:* mailed registrations may take more than 5-10 business days before they are received because we continue to experience longer delays in receiving mail. We encourage all attendees to register online. See the registration form for mailing instructions. All registrations will be confirmed by email as long as your registration is received no later than May 15, 2025.

BE SURE TO CHECK YOUR SPAM BOX FOR EMAILS REGARDING THIS CONFERENCE.

## CANCELLATION POLICY

In order to process refunds for course withdrawals, cancellations must be received in writing by May 2, 2025 (subject to a service charge equivalent to 10% of the registration fee, but no less than \$25.00). No refunds will be issued thereafter.

The University reserves the right to cancel or postpone any course due to unforeseen circumstances. In the event of cancellation or postponement, the University will refund registration fees but is not responsible for related costs or expenses to participants, including cancellation fees assessed by hotels, airlines, and travel agencies.



**Directions to Perelman Center for Advanced Medicine/  
Smilow Center for Translational Research:**

The Arthur H. Rubenstein Auditorium at the Smilow Center for Translational Research is located on floor C of the Perelman Center for Academic Research, 3400 Civic Center Blvd., Philadelphia, PA. We strongly recommend you use GPS for exact directions to and from your starting point or if you prefer, take public transportation to and from campus, please visit <http://www.upenn.edu/services/transportation> for options.

**Parking:** On Saturdays, attendees can park at the Penn Museum Parking Garage, 3220 South Street, Philadelphia, PA. Cost per day for this garage is \$18. Parking fees will not be validated or reimbursed.

**Overnight Accommodation within Walking Distance:**

The Study at University City Hotel  
20 South 33rd Street  
Philadelphia, PA 19104  
215-387-1400

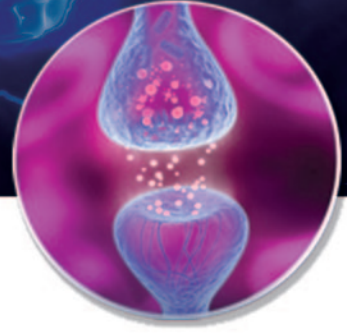
There is no room block or discounted rate available and rooms are subject to availability.

---

**SERVICES FOR THE DISABLED** If special arrangements are required for an individual with a disability to attend this meeting, please contact the Office of Continuing Medical and Interprofessional Education no later than May 2, 2025, at 215-898-6400.

**NONDISCRIMINATION STATEMENT** The University of Pennsylvania values diversity and seeks talented students, faculty, and staff from diverse backgrounds. The University of Pennsylvania does not discriminate on the basis of race, sex, sexual orientation, gender identity, religion, color, national or ethnic origin, age, disability, or status as a Vietnam Era Veteran or disabled veteran in the administration of educational policies, programs or activities; admissions policies; scholarship and loan awards; athletic, or other University administered programs or employment. Questions or complaints regarding this policy should be directed to Executive Director, Office of Affirmative Action and Equal Opportunity Programs, 3600 Chestnut Street, Sansom Place East Suite 228, Philadelphia, PA 19104-6106 or 215-898-6993 (Voice) or 215-898-7803 (TDD). [www.upenn.edu/affirm-action](http://www.upenn.edu/affirm-action).

# FACULTY



## CONFERENCE DIRECTOR

### Chafic Karam, MD

Professor of Clinical Neurology  
Penn Medicine  
Philadelphia, PA

## SPEAKERS

### Naomi Amudala, CRNP, MSN\*

Nurse Practitioner  
Penn Medicine  
Philadelphia, PA

### Shawn Bird, MD

Professor of Neurology  
Chief, Neuromuscular Division Medical  
Director, Neurodiagnostic Laboratories  
Director, Electromyography (EMG) and  
Evoked Potentials Laboratory

### Lauren Elman, MD

Professor of Neurology  
Director, Muscular Dystrophy  
Association Clinic  
Director, Penn Comprehensive ALS Center  
Penn Medicine  
Philadelphia, PA

### Nasheed Hossain, MD

Assistant Professor of Medicine  
(Hematology-Oncology)  
Chair, Transfusion Committee  
Penn Medicine  
Philadelphia, PA

### Michelle Kaku, MD

Associate Professor of Neurology  
Vice Chair of Education  
Icahn School of Medicine at Mount Sinai  
New York, NY

### Rami Massie, MD

Neurologist, ALS Programme  
Neuromuscular Programme  
McGill University Health Centre  
Montreal, QC

### Colin Quinn, MD

Professor of Clinical Neurology  
Director, CMJC VAMC ALS Clinic  
Co-Director, Penn Neuromuscular Center  
for Advanced Therapeutics (PNCAT)  
Associate Director, Muscular Dystrophy  
Association (MDA) Clinic Associate  
Penn Medicine  
Philadelphia, PA

### A. Gordon Smith, MD, FAAN

Professor and Chair of Neurology  
Kenneth and Dianne Wright Distinguished  
Chair in Clinical and Translational Research  
Virginia Commonwealth University  
Richmond, VA

## CASE PRESENTERS

### Michael Bear, MD

Assistant Professor  
of Neurology  
Co-Director, Penn  
Comprehensive ALS Center  
Penn Medicine  
Philadelphia, PA

### Rebecca Hsu, MD

Neuromuscular Fellow  
Penn Medicine  
Philadelphia, PA

### Paul Mcintosh, MD

Assistant Professor  
of Neurology  
Penn Medicine  
Philadelphia, PA

## DISCLOSURES

Penn Medicine, Office of Continuing Medical and Interprofessional Education, adheres to the *ACCME Standards for Integrity and Independence in Accredited Continuing Education*. Faculty members are also expected to disclose to participants any discussions of off-label and/or investigational uses of pharmaceutical products or devices within their presentations.



# AGENDA

- 7:45 AM – 8:20 AM In-Person Registration and Continental Breakfast  
8 AM – 8:20 AM Sign into the Virtual Platform (*Virtual Attendees Only*)  
8:20 AM – 8:30 AM **Welcome**  
*Chafic Karam, MD*

## MORNING SESSION

- 8:30 AM – 9:00 AM **Update on SMA and ALS Treatments**  
*Lauren Elman, MD*
- 9:00 AM – 9:20 AM **Case Presentations**  
*Chafic Karam, MD*
- 9:20 AM – 9:50 AM **Novel Therapies in CIDP, GBS and MMN**  
*Rami Massie, MD*
- 9:50 AM – 10:10 AM Break
- 10:10 AM – 10:50 AM **Updates in Myasthenia Gravis**  
*Shawn Bird, MD*
- 10:50 AM – 11:10 AM **Case Presentations**  
*Rebecca Hsu, MD*
- 11:10 AM – 11:30 AM **Updates in Diagnosis and Management of Hereditary Transthyretin Amyloidosis**  
*Michelle Kaku, MD*
- 11:30 AM – 11:50 AM **Case Presentations**  
*Michael Bear, MD*
- 11:50 AM – 12:50 PM Lunch Break

## AFTERNOON SESSION

- 12:50 – 1:20 PM **ARTHUR ASBURY ENDOWMENT LECTURE:**  
**TBD**  
*A. Gordon Smith, MD, FAAN*
- 1:20 PM – 1:40 PM **Case Presentations**  
*Paul McIntosh, MD*
- 1:40 PM – 2:10 PM **Update in Treatment of Hereditary Myopathies**  
*Colin Quinn, MD*
- 2:10 PM – 2:20 PM Break
- 2:20 PM – 2:40 PM **Updates in the Management of Vasculitis**  
*Naomi Amudala, CRNP, MSN*
- 2:40 PM – 3:00 PM **Car-T in Auto-immune Disorders**  
*Nasheed Hossain, MD*
- 3:00 PM – 3:10 PM **Questions & Wrap Up**  
3:10 PM Adjourn

**IN-PERSON AND VIRTUAL**PENN NEUROMUSCULAR  
SYMPOSIUM 2025**SATURDAY, MAY 17, 2025**  
**7:45 AM – 3:10PM EDT**

We strongly encourage you to register for this conference online by check or credit card at <https://upenn.cloud-cme.com/neuromuscular2025>

**Questions? Contact us at:**

penncme@pennteam.upenn.edu • Phone: 215-898-6400 or 215-898-8005

Please note we are unable to accept faxed registration forms.

Please print or type

Name (First)

(Last)

Academic Degree

Medical Specialty

Affiliation (Hospital, Office, or Company)

Address (  Affiliation or  Home)

City

State

Zip

Phone

Fax

E-mail

**REGISTRATION FEES**

(pre-payment is required to be officially registered)

**IN-PERSON ATTENDANCE:**

- Physicians and industry employees – \$125
- Nurse practitioners, nurses, pharmacists, physician assistants, researchers and other healthcare professionals – \$75
- There is no fee for residents, fellows, students and Penn Medicine Neurology employees, faculty and staff to attend.

**LIVE-STREAM (VIRTUAL) ATTENDANCE:**

- Physicians and industry employees – \$100
- Nurse practitioners, nurses, pharmacists, physician assistants, researchers and other healthcare professionals – \$50
- There is no fee for residents, fellows, students and Penn Medicine Neurology employees, faculty and staff to attend.

**PAYMENT METHOD**

- If you are paying by check or credit card, please register online at <https://upenn.cloud-cme.com/neuromuscular2025>
- If you are paying by check, you may mail your completed registration form and check made payable to **The Trustees of the University of Pennsylvania/CME** to:
  - Conference Manager
  - Office of Continuing Medical & Interprofessional Education
  - Academic Programs, Penn Medicine, JMEC, SPE, 6th floor
  - 3400 Civic Center Blvd, Bldg. 421
  - Philadelphia, PA 19104-5162
- Do not include any credit card information on the registration form or share via email.